

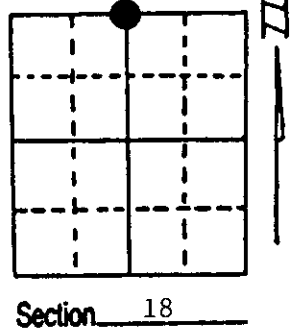
U.S. PUBLIC LAND SURVEY MONUMENT RECORD

Note: This form is intended and designed to fulfill all requirements of Wisconsin Administrative Code, Chapter A-E 7.08 U.S. Public Land Survey Monument Record (3) (a) (b) (c) (d) (e) (f) (g) (h) (i). An additional sheet may be added if necessary to conform with said requirements.

(a) Corner location: Township 37 North
 Range 6 East/West

Town/City/Village Cassian

County Oneida



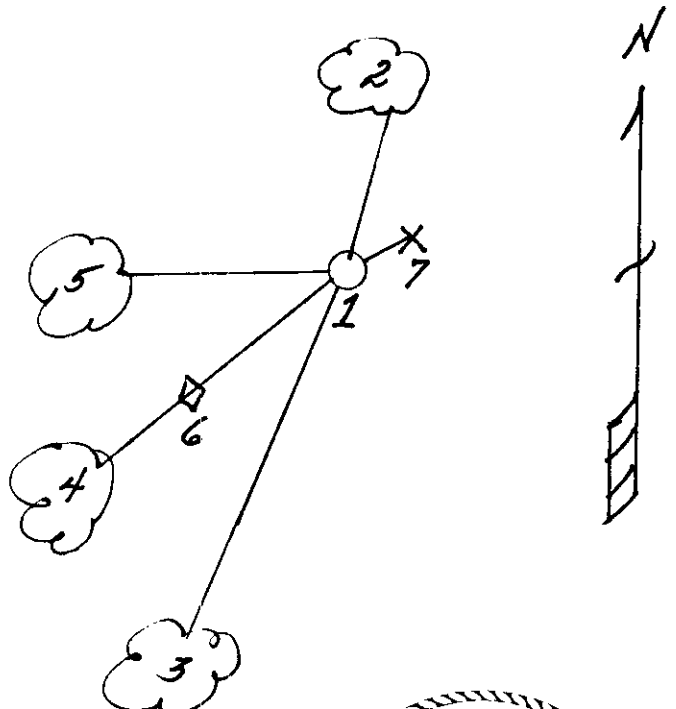
(b) (f) (g) (h) Description of monument found at this corner and if it was accepted, state all evidence (material, testimonial, occupational, plats, records, other monuments) used as a basis for accepting. If not accepted or if nothing was found, state evidence used as basis for establishing location. If reestablished through lost corner proportionate methods, indicate all monuments, distances and directions used to establish. Indicate type of monument found or set and sign post.

- 1863 - Joseph H. Jenkins established this corner at 35.12 chains. He set a wood post with two BTs:
 16" Tamarack, N46°W, 9 Links (5.94')
 12" Tamarack, S10°E, 39 Links (25.74')
- 11/20/1936 - V. Maine restored corner by Lost Methods. He set a cedar stake with two BTs:
 4" Spruce, N18°W, 16 3/4 Links (11.055')
 3 1/2" Spruce, S67°W, 21 1/2 Links (14.19')
- 1937 - Maine placed a 2" x 60" iron pipe/brass cap.
- 11/16/1994 - Milo E. Stefan found Maine's monument and northwest BT down. Southwest BT gone. Two Location Posters on down trees. We placed mound of stone around monument to firm it up, made four new BTs, placed Location Poster and set plastic sign post.

(c) (d) (e) Plan view of corner with ties to at least 4 witness monuments. If in disagreement with previously established corner, show the distances between the two corners and also indicate the ties to the disputed corner.

- 1) 2" x 60" Iron Pipe/Brass Cap.
- 2) 12" White Spruce, N6°E, 14.56'.
- 3) 12" Cedar, S16°W, 41.35'.
- 4) 14" Tamarack, S55°W, 23.58'.
- 5) 10" Tamarack, West, 22.61'.
- 6) 10" Black Spruce, S55°W, 7.0 1/2 Location Posters
- 7) Plastic Sign Post, NE, 1.5'.

Distances to nail in side of BTs.
 Stump blazes scribed "BT".



(i) I, Milo E. Stefan
 (type or print name) certify that the corner location on this record was determined by me or under my direction and control and that this U.S. Public Land Survey Monument Record is correct and complete to the best of my knowledge and belief.

Milo E. Stefan
 Signature

November 28, 1994
 Date



Index No. J-3

3706070020

FEB 23 2016

AT _____ O'CLOCK _____ M
KYLE J. FRANSON
REGISTER OF DEEDS

U.S. PUBLIC LAND SURVEY MONUMENT RECORD

S 1/4 CORNER, SECTION 7 T. 37 N., R. 6 E., TOWN OF Cassian, ONEIDA COUNTY, WISCONSIN.

COUNTY PLANE COORDINATES
(NAD-83/91 Adj.) (NAD-83, WISCORS 2011 Adj. RTK)

NORTH _____ (188693.84)

EAST _____ (168075.24)

SCALE FACTOR _____

THETA ANGLE _____

STATE PLANE COORDINATES

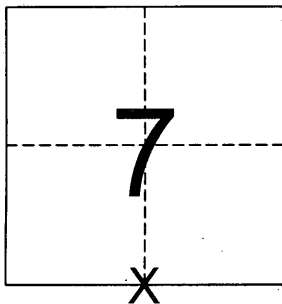
NORTH _____

EAST _____

SCALE FACTOR _____

THETA ANGLE _____

LOCATION SKETCH



HISTORY

July 5th, 1863, Joseph H. Jenkins established this corner at 35.12 chains. He set a wood post with two BTs: 16" Tamarack, N46°W, 9 Links (5.94') and 12" Tamarack, S10°E, 39 Links (25.74').

11-20-1936, County Surveyor, V.M. Maine, restored corner by Lost Methods. He set a cedar stake with two BT's; 4" Spruce, N18°W, 16 3/4 Links (11.055'), 3 1/2" Spruce, S67°W, 21 1/2 Links (14.19').

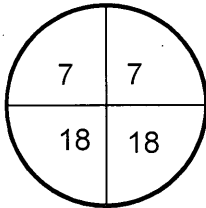
1937 - Maine placed a 2" x 60" iron pipe/brass cap.

1957, Owen-Illinois section sheet shows corner by others: 4" spr. N40W 14.0', 8" Blsm. S15W 16.0'.

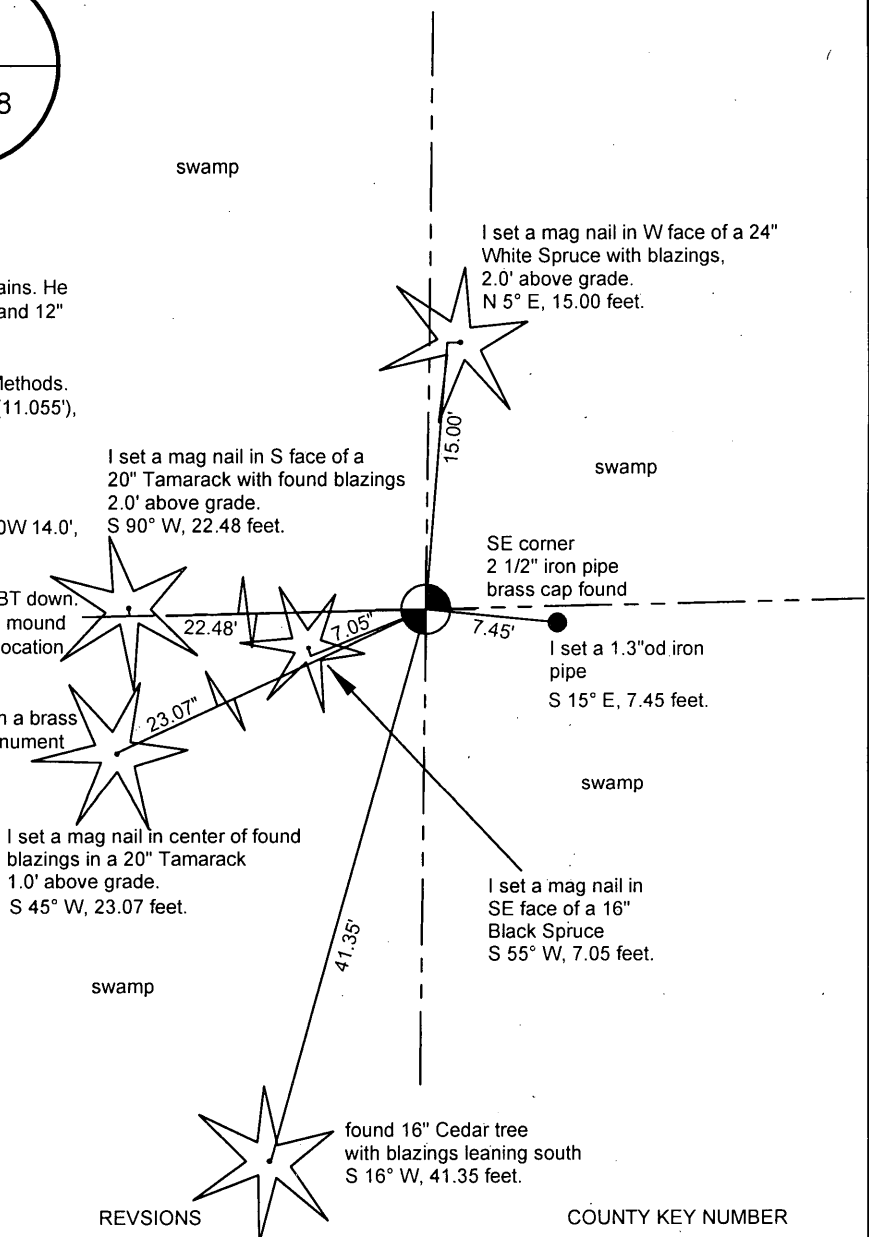
11-16-1994 - Milo E. Stefan found Maine's monument and northwest BT down. Southwest BT gone. Two Location Posters on down trees. We placed mound of stone around monument to firm it up, made four new BTs, placed Location Poster and set plastic sign post.

04-17-2015 Donald J. Thoma, S - 2470, I found a 2 1/2" iron pipe with a brass cap, tall; in good condition with rocks around base. I accepted the monument and took ties.

T. 37 N.-R. 6 E.



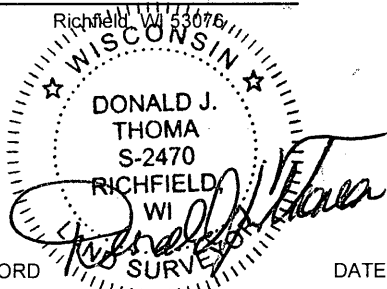
TIE SKETCH



Survey # S-2470 *MAY 27, 2015*

Firm (Surveyor) Accurate Surveying & Engineering, LLP

(Address) 2911 Wildlife Lane
Richfield, WI 53076



RECEIVED FOR RECORD _____ DATE _____ REVISIONS _____ COUNTY KEY NUMBER 3706070020

SIGNED _____ ONEIDA COUNTY SURVEYOR _____ USFS KEY NUMBER J - 3

SIGNED _____ ONEIDA COUNTY SURVEYOR _____