

# U.S. PUBLIC LAND SURVEY MONUMENT RECORD

REGISTER OF DEEDS OFFICE  
ONEIDA COUNTY  
FILED

JUN 01 2017

Note: This form is intended and designed to fulfill all requirements of the Wisconsin Administrative Code, Chapter A-E 7.08 U.S. Public Land Monument Record (3)(a)(b)(c)(d)(e)(f)(g)(h)(i). An additional sheet may be added if necessary to conform with said requirements.

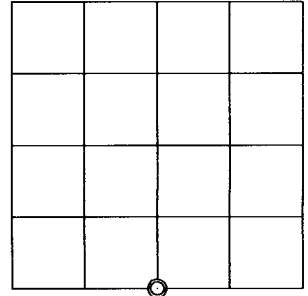
(a) CORNER LOCATION: WISCRS - Oneida County  
 South Quarter Corner of Section 8  
 Township 36 North  
 Range 6 East  
 Town of Nokomis  
 County of Oneida

North: 155999.474 USft  
 East: 172992.088 USft  
 Latitude: 45° 36' 49.26989" N  
 Longitude: 89° 46' 01.90996" W  
 Datum: NAD 83(2011)  
 GNSS Method: RTK - Direct  
 GNSS Control: WISCORS VRS  
 Record North: 155999.539 USft  
 Record East: 172992.146 USft  
 Record Datum: NAD 83(1991)

AT \_\_\_\_\_ O'CLOCK \_\_\_\_\_ M  
 KYLE J. FRANSON  
 REGISTER OF DEEDS

(RECORDING AREA)

SECTION 8



(b) HISTORY OF ORIGINAL CORNER ESTABLISHMENT

Original Surveyor: Joseph H. Jenkins  
 Date of Survey: Commenced October 13, 1862  
 Completed October 28, 1862  
 Original B.T.'S: Spruce 5" N 89°E, 111 lks.  
 No other trees near.

(f)(g)(h) DESCRIPTION OF MONUMENT FOUND AT THIS CORNER AND IF IT WAS ACCEPTED, STATE ALL EVIDENCE (MATERIAL, TESTIMONIAL, OCCUPATIONAL, PLATS, RECORD, OTHER MONUMENTS) USED AS A BASIS FOR ESTABLISHING LOCATION. IF NOT ACCEPTED OR IF NOTHING WAS FOUND, STATE EVIDENCE USED AS BASIS FOR ESTABLISHING LOCATION. IF REESTABLISHED THROUGH LOST CORNER PROPORTIONATE METHODS, INDICATE ALL MONUMENTS, DISTANCES AND DIRECTIONS USED TO ESTABLISH. INDICATE TYPE OF MONUMENT AND SIGN POST FOUND OR SET.

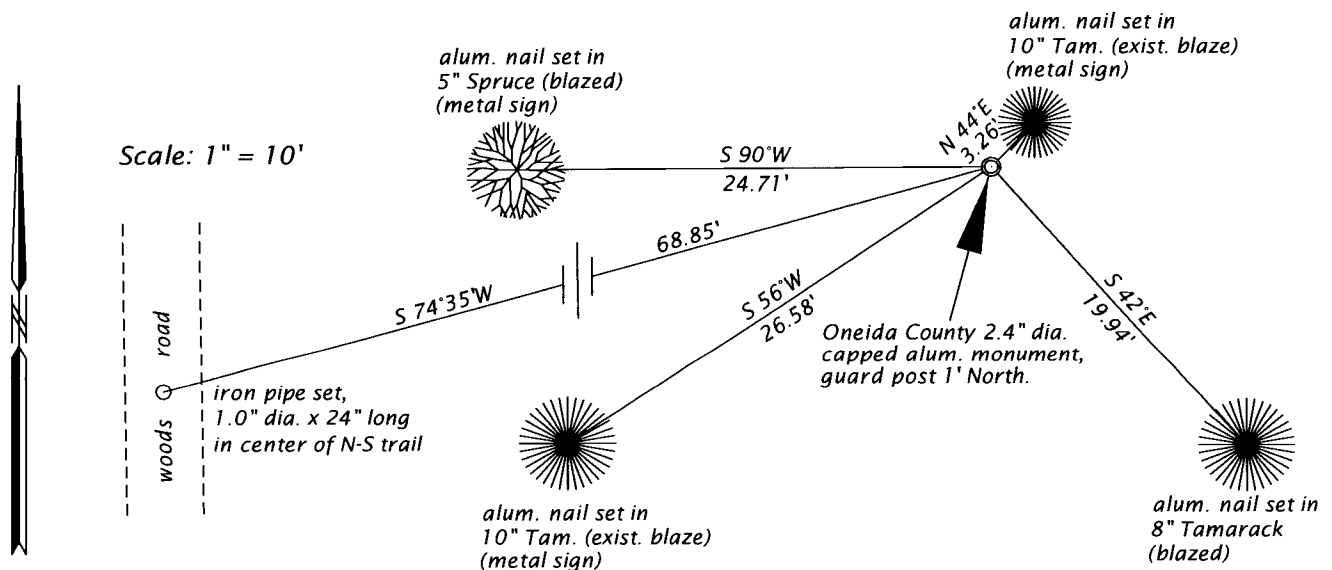
September 24, 1903 - D. H. Vaughan, County Surveyor, (Old Field Book 4, page 53 and Dorr-Vaughan Book, page 28) survey in Section 17 notes "N 1/4 P set from org. trees. E one down and under the moss nearly one foot".

1960 - Owens-Illinois (Ownership Boundary Survey, map drawn by W. H. Stuth, 12/12/86, filed in NEPCO Book 1, pages 51 and 52) for a survey in Section 17, T36N, R6E, legends corner "IRON PIPE OR CAP", established by proportionate measurement, referenced by a 6" Tam. N40°E, 3.0' and by a 8" Spruce S47°W, 26.0'.

March 27, 2017 - James D. Rein, PLS No. 1234 - we recovered a 1 1/4" dia. iron pipe in wetland bog, referenced by the O-I bearing trees. We are unable to find any evidence of the original corner. I accept this monumented corner position, based on my analysis of the published section corner coordinates, as a good faith reestablishment of the corner, by single proportionate measurement. We drove an Oneida County capped 2.4" x 30" long aluminum monument over the pipe and made reference ties as shown in the plan.

The coordinate value shown has been verified by at least one of the following methods: 1) comparison to a previously GPS determined published value; 2) the value is the average of two or more GPS observations at a markedly different time; 3) one or more distances were measured back to the GPS observed corner from temporary GPS observed offset locations.

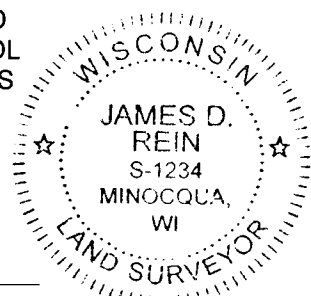
(c)(d)(e) PLAN VIEW OF CORNER WITH TIES TO AT LEAST 4 WITNESS MONUMENTS. IF IN DISAGREEMENT WITH PREVIOUSLY ESTABLISHED CORNER, SHOW THE DISTANCE BETWEEN THE TWO CORNERS AND ALSO INDICATE THE TIES TO THE DISPUTED CORNER.



(i) I, JAMES D. REIN, PROFESSIONAL LAND SURVEYOR NO. S-1234 HEREBY CERTIFY THAT THE CORNER LOCATION ON THIS RECORD WAS DETERMINED BY ME OR UNDER MY DIRECTION AND CONTROL AND THAT THIS U.S. PUBLIC LAND SURVEY MONUMENT RECORD IS CORRECT AND COMPLETE TO THE BEST OF MY KNOWLEDGE AND BELIEF.

*James D. Rein*  
 SIGNATURE

5-24-17  
 DATE



INDEX NO. J-7  
 3606080020