



North ¼ corner, Section 16, T.36 N., R.6 E.

Addition history:

In County Surveyor files, found Owens-Illinois Section 9 map, prepared by W.H.Stuth, dated 3/9/87 which referenced that survey was done in 1963. Map noted iron pipe at this ¼ corner with no bearing trees show. Map also had distance East and West to section corners which established this 1/4 corner at midway between section corners.

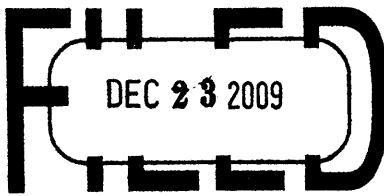
In County Surveyor files, found Owens-Illinois Section 16 map, prepared by W.H.Stuth, dated 3/9/87 which referenced that survey was done in 8/8/86. Map noted iron pipe at this ¼ corner with no bearing trees show. Map also had distance East and West to section corners which established this 1/4 corner at midway between section corners. Map also had measurements South to Center of Section 16.

March 8, 2006, MSA Professional Services, by Eugene Uttech, found a 1 1/2" iron pipe at the site. We took measurements ½ mile East and West and 1/2 mile South to other corners and verified iron pipe was the same as shown on Owens-Illinois maps. I accepted iron pipe as record evidence and set ties as shown.



~~3808330000~~

213



At \_\_\_\_\_ O'Clock \_\_\_\_\_ M  
**THOMAS H. LEIGHTON**  
REGISTER OF DEEDS

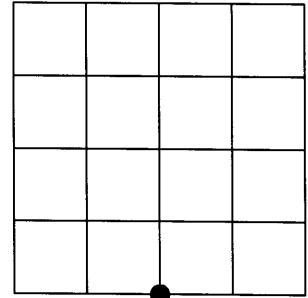
U.S. PUBLIC LAND SURVEY MONUMENT RECORD

Note: This form is intended and designed to fulfill all requirements of the Wisconsin Administrative Code, Chapter A-E 7.08 U.S. Public Land Monument Record (3)(a)(b)(c)(d)(e)(f)(g)(h)(i). An additional sheet may be added if necessary to conform with said requirements.

(a) CORNER LOCATION:

South Quarter Corner of Section 9  
Township 36 North  
Range 6 East  
Town of Nokomis  
County of Oneida  
Wisconsin

Oneida County Coordinates  
North: 156066.1665  
East: 178355.4770  
Control Station: Oneida County #275  
Latitude: 45° 38' 41.06726" N  
Longitude: 89° 44' 58.35638" W  
Datum: NAD-83 (1991)  
Method: Real Time Kinematic -  
Post-Processed - Averaged



SECTION 9

(b) HISTORY OF ORIGINAL CORNER ESTABLISHMENT

Original Surveyor: Joseph H. Jenkins - Set 1/4 section post      Original B.T.'S - No trees near and too wet to make a mound  
Date of Survey: Commenced - October 13, 1862  
Completed - October 28, 1862

(f)(g)(h) DESCRIPTION OF MONUMENT FOUND AT THIS CORNER AND IF IT WAS ACCEPTED, STATE ALL EVIDENCE (MATERIAL, TESTIMONIAL, OCCUPATIONAL, PLATS, RECORDS, OTHER MONUMENTS) USED AS A BASIS FOR ESTABLISHING LOCATION. IF NOT ACCEPTED OF IF NOTHING WAS FOUND, STATE EVIDENCE USED AS BASIS FOR ESTABLISHING LOCATION. IF REESTABLISHED THROUGH LOST CORNER PROPORTIONATE METHODS, INDICATE ALL MONUMENTS, DISTANCES AND DIRECTIONS USED TO ESTABLISH. INDICATE TYPE OF MONUMENT AND SIGN POST FOUND OR SET.

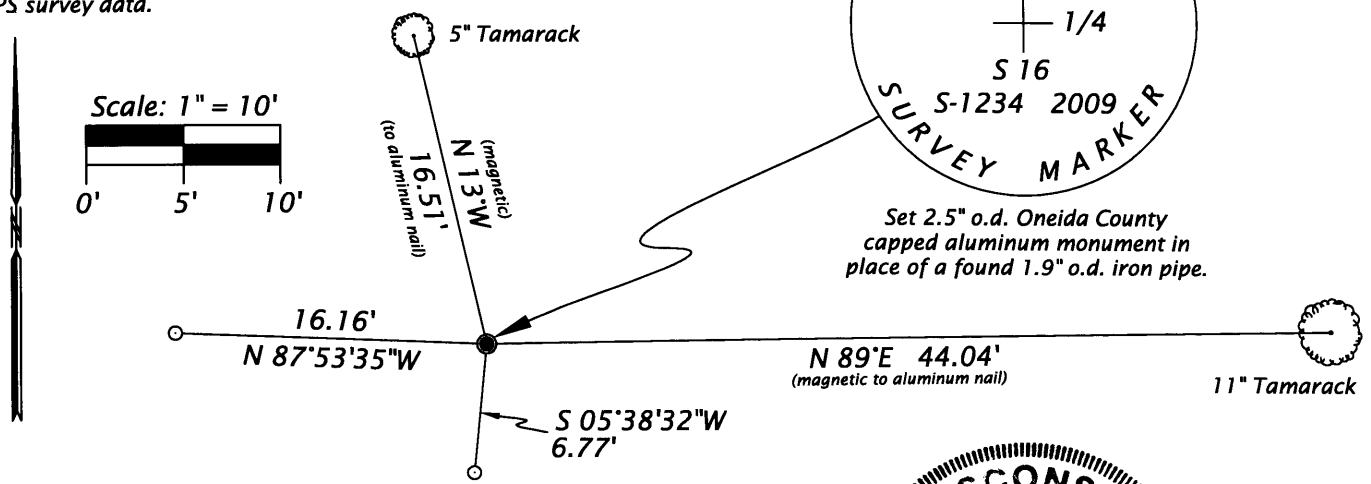
December 15, 1985 - William H. Stuth indicates an iron pipe or cap at this corner with a No Bts per his Owens-Illinois Ownership Boundary Survey map prepared March 9, 1987 and filed in the Oneida County Surveyors Office.

August 25, 2009 - I, James D. Rein, Professional Land Surveyor No. S-1234, found a 1.9" o.d. iron pipe and a 4" dia. wood post rotted off 3' below grade. I accepted the location of said iron pipe and set a 2.5" o.d. x 60" long Oneida County capped aluminum monument in its place and set two (2) 1.0" o.d. x 24" long iron pipes as reference monuments and made two (2) new bearing trees as shown in the sketch below. I also set a white plastic marker post North, 1.0'.

(c)(d)(e) PLAN VIEW OF CORNER WITH TIES TO AT LEAST 4 WITNESS MONUMENTS. IF IN DISAGREEMENT WITH PREVIOUSLY ESTABLISHED CORNER, SHOW THE DISTANCE BETWEEN THE TWO CORNERS AND ALSO INDICATE THE TIES TO THE DISPUTED CORNER.

⊙ = Set iron pipe; 1.0" o.d. x 48" long.

Bearings Oneida County Grid,  
based on GPS survey data.



(i) I, JAMES D. REIN, PROFESSIONAL LAND SURVEYOR NO. S-1234 HEREBY CERTIFY THAT THE CORNER LOCATION ON THIS RECORD WAS DETERMINED BY ME OR UNDER MY DIRECTION AND CONTROL AND THAT THIS U.S. PUBLIC LAND SURVEY MONUMENT RECORD IS CORRECT AND COMPLETE TO THE BEST OF MY KNOWLEDGE AND BELIEF.

SIGNATURE

12/15/09  
DATE



INDEX NO. 511

3606090020