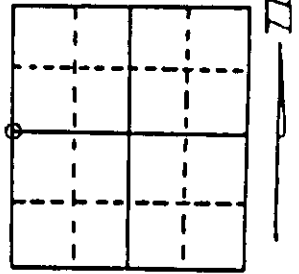


U.S. PUBLIC LAND SURVEY MONUMENT RECORD

Note: This form is intended and designed to fulfill all requirements of Wisconsin Administrative Code, Chapter A-E 7.08 U.S. Public Land Survey Monument Record (3) (a) (b) (c) (d) (e) (f) (g) (h) (i). An additional sheet may be added if necessary to conform with said requirements.

(a) Corner location: Township 36 North
 Range 06 East/West



Section 11

Town/City/Village NOKOMIS
 County ONEIDA

(b) (f) (g) (h) Description of monument found at this corner and if it was accepted, state all evidence (material, testimonial, occupational, plats, records, other monuments) used as a basis for accepting. If not accepted or if nothing was found, state evidence used as basis for establishing location. If reestablished through lost corner proportionate methods, indicate all monuments, distances and directions used to establish. Indicate type of monument found or set and sign post.

Oct. 1862 (Orig.) J.H. Jenkins, North betwn. Sections 10 & 11, Var 6°E, 40.00 chns. set 1/4 post, BT's - B. pine 8"N83°W, 11 lks., B. pine 8"N78°W, 20 lks.

4 May 1901 D.H. Vaughan, OCS record pg. 21 - corner lost, double proportion to set 1/4 (post) betwn... 10 & 11 at 39.96 1/2 chns. north of corner 10, 11, 15 & 14, placed a pump point for post....

1930's Wisconsin Hwy. Commission surveyors find corner and tie it into the survey for U.S. Hwy "51", locating it 2660.90 feet (40.32 chns) north of the railroad rail D.H. Vaughan set for the section corner and about 100 feet west of the centerline of the new highway (now C.T.H. "L") on a north-south fence and 9 feet south of an east-west fence.

1959-62 surveys by O-I show corner in the highway.....

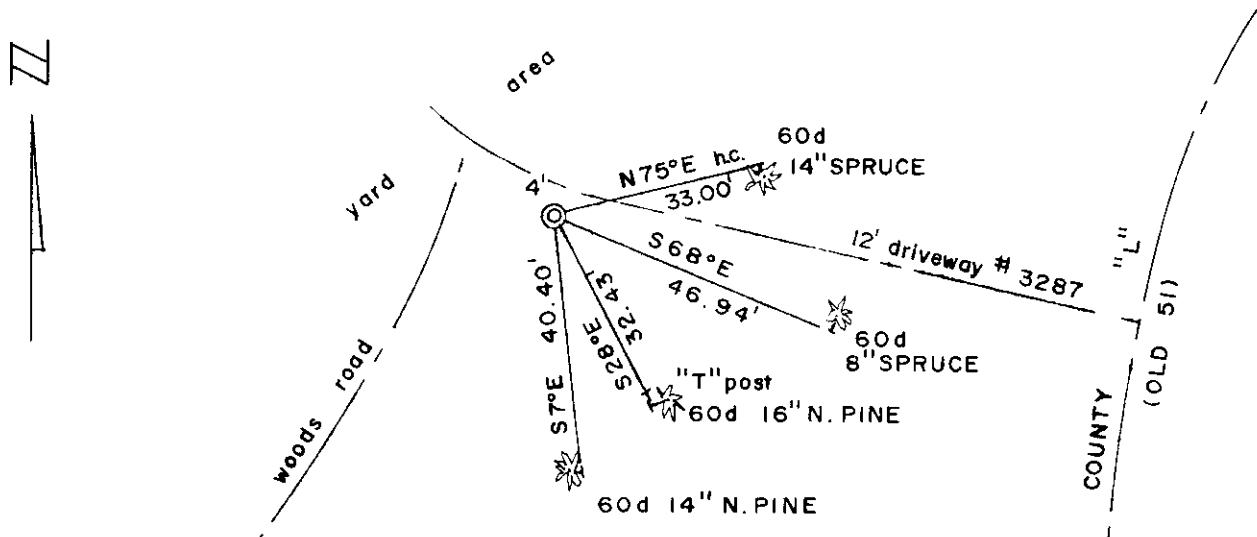
1997 R.H. Winat ALS, search area for evidence none found in highway or to the west. SHCW area falls in yard & driveway area which has been cut about 2-1/2 to 3 feet... calculate corner position from SHCW record...

26 Aug 1998 W.C. Rohde, ALS, re-establishes the corner to Sections 10, 11, 15 & 14..

19 March 2002 J.D. Rein & R.H. Winat agree to use hwy. record to fix corner.

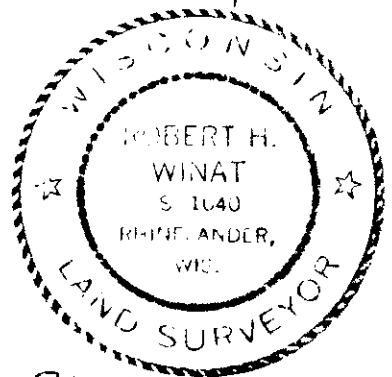
5 May 2002 R.H. Winat sets O.C. Berntsen alum. mont. and make BT'S as below.

(c) (d) (e) Plan view of corner with ties to at least 4 witness monuments. If in disagreement with previously established corner, show the distances between the two corners and also indicate the ties to the disputed corner.



(i) I, Robert H. Winat, S-1040
 (type or print name) certify that the corner location on this record was determined by me or under my direction and control and that this U.S. Public Land Survey Monument Record is correct and complete to the best of my knowledge and belief.

Robert H. Winat
 Signature Date 5 May 2002



3606102600
 Stamp

Index No. G 17