

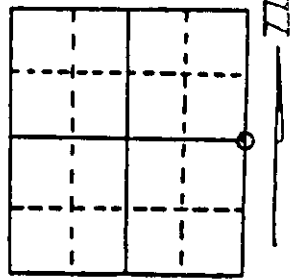
# U.S. PUBLIC LAND SURVEY MONUMENT RECORD

Note: This form is intended and designed to fulfill all requirements of Wisconsin Administrative Code, Chapter A-E 7.08 U.S. Public Land Survey Monument Record (3) (a) (b) (c) (d) (e) (f) (g) (h) (i). An additional sheet may be added if necessary to conform with said requirements.

(a) Corner location: Township 36 North  
 Range 06 East/West

Town/City/Village ~~X~~ NOKOMIS

County ONEIDA



Section 11

(b) (f) (g) (h) Description of monument found at this corner and if it was accepted, state all evidence (material, testimonial, occupational, plats, records, other monuments) used as a basis for accepting. If not accepted or if nothing was found, state evidence used as basis for establishing location. If reestablished through lost corner proportionate methods, indicate all monuments, distances and directions used to establish. Indicate type of monument found or set and sign post.

1862(original) J.H. Jenkins, Dep. Sur., North betwn. Sec. 11 & 12, var 6°45'E, 40.00 chn. set post, Aspen 9°N25°E, 37 lks., Aspen 7°N70E, 12 lks.

1901 D.H. Vaughan, OCS pg. 21 ... Set E(ast) 1/4 P(ost) at 40.21 chns, Y. Pine 10°S37 1/2°E, 38 lks. (25.08').

1959-62 O-I survey. Corner by others, 12" J. Pine N7°W, 40.0', 16" R. Pine S38°E, 26.0' rescribed S NCC alum. tag.

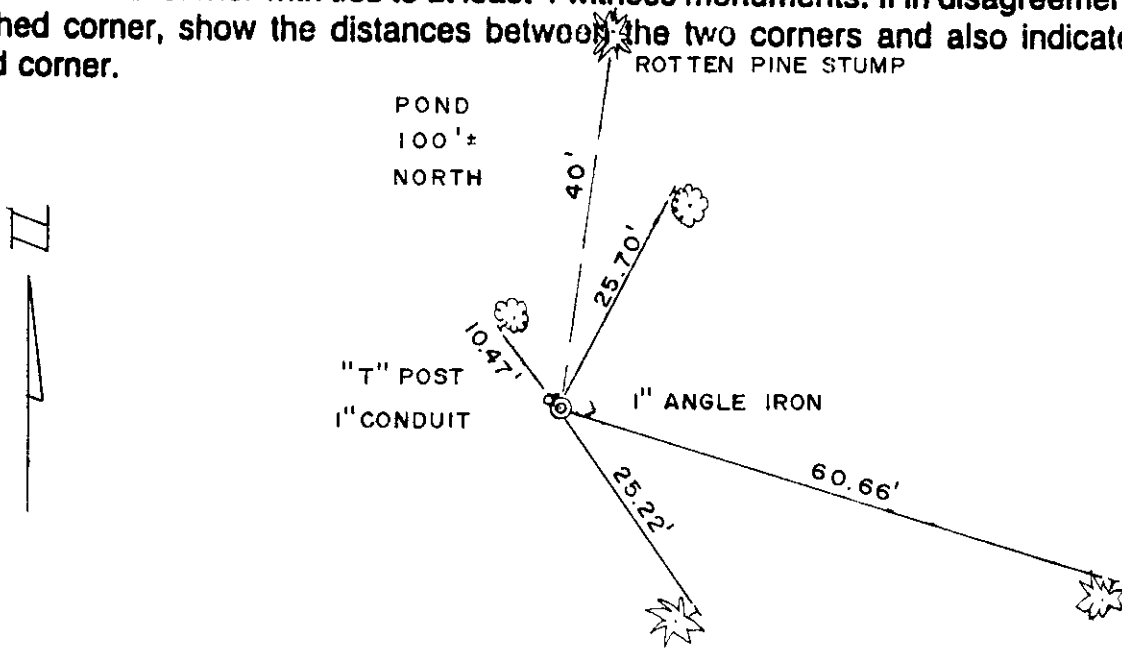
1974 Wis. D.O.T. recover Angle iron & remains of cedar post & O-I BT's. coord.

2002 R.H. Winat, RLS, recover remains of post in posthole, set O.C. Berntsen Alm. mont. with "T" post N40°W, 0.5' adjacent to 1" conduit & 1" angle iron, S75°E, 0.8'.

Set 60d nail at root crown in:

- 5" Aspen, N38°W, 10.47'
- 7" Aspen, N26°E, 25.70'
- 16" Norway Pine, S74°E, 60.66'
- 24" Norway Pine, S36°E, 25.22' (D.H.V.'s BT with O-I recovery).

(c) (d) (e) Plan view of corner with ties to at least 4 witness monuments. If in disagreement with previously established corner, show the distances between the two corners and also indicate the ties to the disputed corner.



(i) I, Robert H. Winat, S-1040  
 (type or print name) certify that the corner location on this record was determined by me or under my direction and control and that this U.S. Public Land Survey Monument Record is correct and complete to the best of my knowledge and belief.

Robert H. Winat  
 Signature

Date 29 Jun 2002



36 06 11 20 00

Stamp

Index No. G 21