

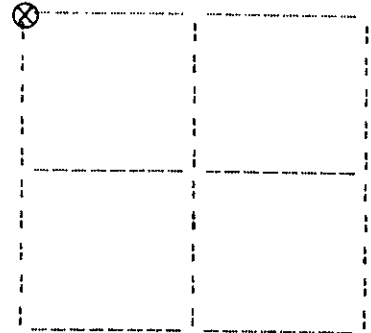
U. S. PUBLIC LAND SURVEY MONUMENT RECORD

Note: This form is intended and designed to fulfill all requirements of Wisconsin Administrative Code, Chapter A-E 7.08 U.S. Public Land Survey Monument Record (3) (a) (b) (c) (d) (e) (f) (g) (h) (i). An additional sheet may be added if necessary to conform with said requirements.

(a) Corner location: Township 36 North
Range 6 East

Town of Nokomis

Oneida County, Wisconsin



Section 24

(b) (f) (g) (h) Description of monument found at this corner and if it was accepted, state all evidence (material, testimonial, occupational, plats, records, other monuments) used as a basis for accepting. If not accepted or if nothing was found, state evidence used as basis for establishing location. If reestablished through lost corner proportionate methods, indicate all monuments, distances and directions used to establish. Indicate type of monument found or set and sign post.

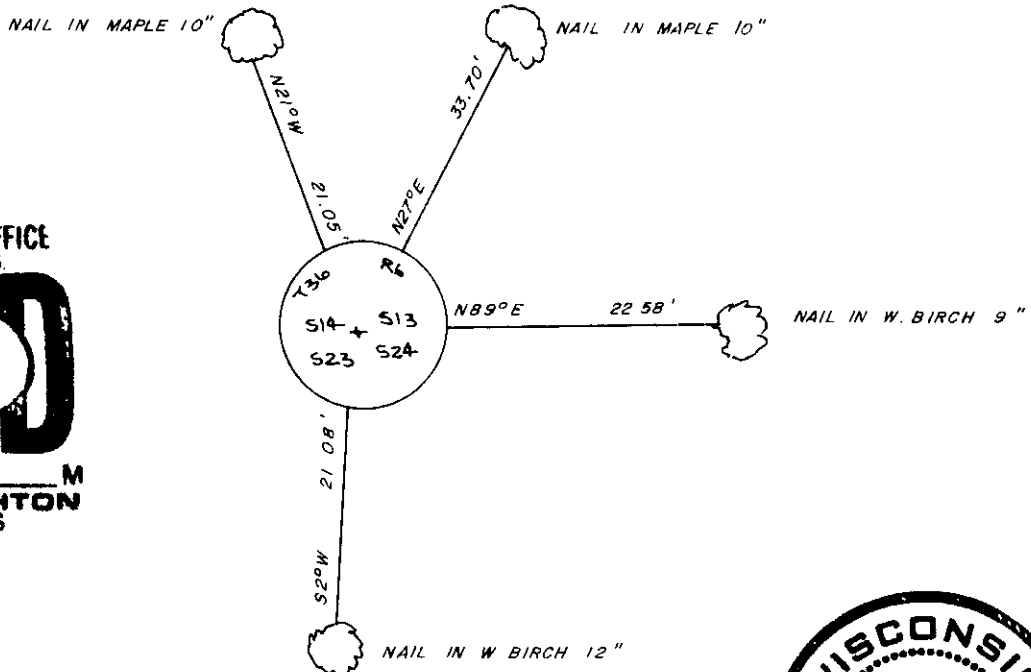
October, 1862: Joseph Jenkins set a wood post: w.pine 15° N89°W, 35 lks., w.pine 16° N17°E, 45 lks, b.pine 15° S45°E, 37 lks., b.pine 12° S22°W, 33 lks.

1937: Maine found point of original stake and stumps of original BTs being w.p. 15° N89°W, .35, w.p. 16° N17°E, .45, b.pine 15° S45°E, .35, b.pine 12° S22°W, .33. set official corner: new BTs: b.oak 5-1/2° N32°E, .24, b.oak 5° S80°W, .75, b.oak 4° S32°W, .54.

May 1, 1974: Wisconsin DOT recovers 2" iron pipe with bronze cap as described in OCS file L-411.

June 21, 1990: I found and accepted a 2-1/2" dia. brass cap on iron post stamped as shown below. I found or established the following witnesses: found old stump hole N36°E, 16.0', found pine stump 24° N17°E, 29.8', found PK nail in dead w.birch 8° S75°E, 14.28', set plastic sign post NE, 0.7', set nail in w.birch 12° S2°W, 21.08', set nail in w.birch 9° N89°E, 22.58', set nail in maple 10° N27°E, 33.70', set nail in maple 10° N21°W, 21.05'.

(c) (d) (e) Plan view of corner with ties to at least four witness monuments. If in disagreement with previously established corner, show the distances between the two corners and also indicate the ties to the disputed corner.



REGISTER OF DEEDS OFFICE
ONEIDA COUNTY, WIS.
FILED
JUL 11 1990
At _____ O'Clock _____ M
THOMAS H. LEIGHTON
REGISTER OF DEEDS

I, Jeffrey W. Austin, Registered Land Surveyor S-1885 certify that the corner location on this record was determined by me or under my direction and control and that this U.S. Public Land Survey Monument Record is correct and complete to the best of my knowledge and belief.



[Handwritten Signature]
Signature _____ Date July 8, 1990

INDEX NO. N-21

3606140000