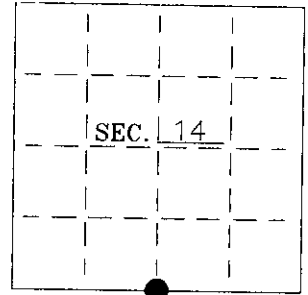


U. S. PUBLIC LAND SURVEY MONUMENT RECORD

Note: This form is intended and designed to fulfill all requirements of Wisconsin Administrative Code—Chapter A-E 7.08 U. S. Public Land Survey Monument Record (3)(a)(b)(c)(d)(e)(f)(g)(h)(i). An additional sheet may be added if necessary to conform with said requirements.

(a) CORNER LOCATION: State Plane Coordinates
S 1/4 corner of Sec. 14 X _____
 Township 36 North Y _____
 Range 6 East Datum Base _____
 Town Nokomis County of Oneida



(b) HISTORY OF ORIGINAL CORNER ESTABLISHMENT:

Original Surveyor: J.H. Jenkins
 Date of Survey: Commenced 1862
 Completed 1862

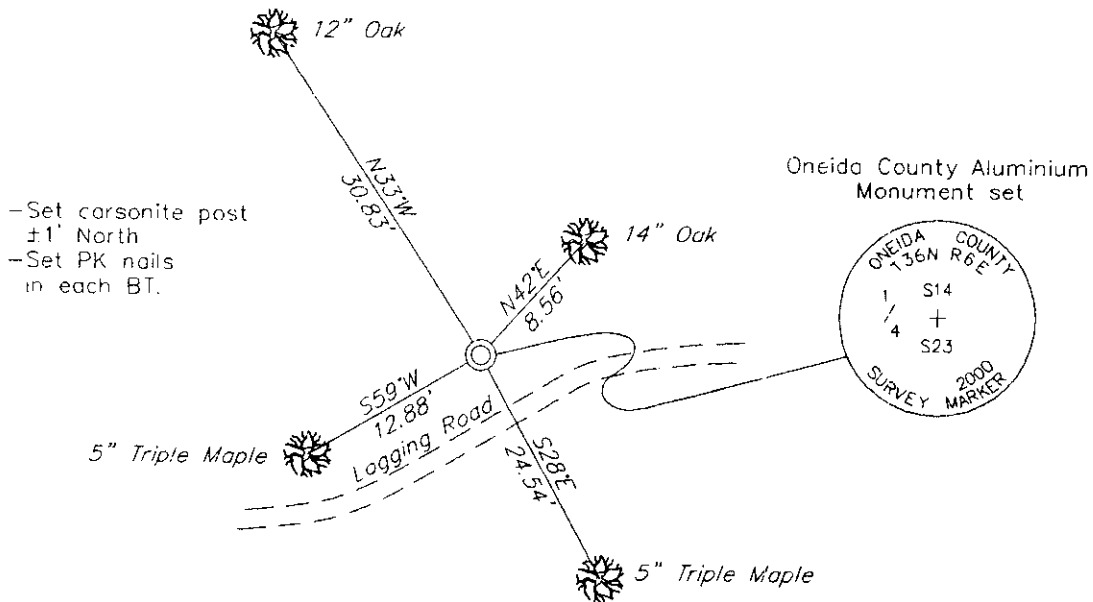
Original B.T.'S

Aspen 6" N82°W, 31 lks
 Oak 7" N77°W, 43 lks

(b)(f)(g)(h) Description of monument found at this corner and if it was accepted—state all evidence (material—testimonial—occupation—plats—records—other monuments) used as a basis for accepting. If not accepted or if nothing was found state evidence used as basis for establishing location. If reestablished through lost corner proportionate methods indicate all monuments—distances and directions used to establish. Indicate type of monument and sign post found or set.

- 1903— D.H. Vaughan's notes indicate original South 1/4 falls in logging road and original BT's are grubbed out. He set the South 1/4 by single proportion between the two section corners. New BT's: 10" White Pine, N12-1/2°W, 29 lks and 12" White Pine, S54°W, 8 lks.
- 1957— On a drawing dated 12/12/86 by W.H. Stuth (O-1), he shows a corner by others with no BT's.
- 2000— I found a 1-1/2" iron pipe in center of a ring of stones 9' North of the centerline of a logging road. Adjacent to iron pipe was a 2-1/2" angle iron stamped "1/4". A 1/2" iron pipe bears: N56°W, 1.27'. I accepted the 1-1/2" iron pipe as the South 1/4 by D.H. Vaughan in 1903, and replaced it with an Oneida County Aluminium Monument.

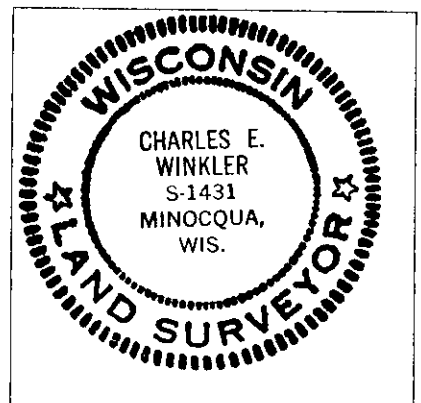
(c)(d)(e) Plan view of corner with ties to at least 4 witness monuments. If in disagreement with previously established corner—show the distances between the two corners and also indicate the ties to the disputed.



—Set corsonite post ±1' North
 —Set PK nails in each BT.

(i) I Charles E Winkler S-1431 hereby certify that the corner location on this record was determined by me or under my direction and control and that this U.S. Public Land Survey Monument Record is correct and complete to the best of my knowledge and belief.

Charles E. Winkler 6/25/2001
 Signature Foltz and Associates, Inc. Date



INDEX NO. N 19

3606140020