

U.S. PUBLIC LAND SURVEY MONUMENT LOCATION RECORD

Recorders Data

CORNER: NW Section SECTION: 23 TOWNSHIP 36 NORTH RANGE 6 EAST/WEST

FOR M.C. CORNER INDICATE: NAME OF WATERWAY N/A SECTION LINE N/A

(CITY)(VILLAGE)(TOWN) OF: Nokomis COUNTY OF: Oneida

Description of monument found or placed and all other evidence used as a basis for monument location; including all monuments and related measurements required if the corner location is reestablished by lost corner proportionate methods. Also indicate name of original surveyor, survey date, corner monument set and established bearing trees, witness or reference monuments with ties from available records.

Found and accepted an older 2" dia. iron pipe monument with uncapped top 3" above grade at this corner location; I carefully removed the undisturbed & plumb iron pipe, 33" long, and reset the corner location with a standard 2" dia. by 30" long aluminum pipe monument with stamped Oneida County cap flush with existing grade.

In 1862, Jenkins/GLO set a wood post as the section corner and marked OBTs, a 10" Pj S77°W 36 lks, an 8" Pj N42°W 36 lks, an 8" Pj N59°E 13 lks and an 8" Pj S48°E 12 lks, all of which are now obliterated beyond recovery for locational purposes.

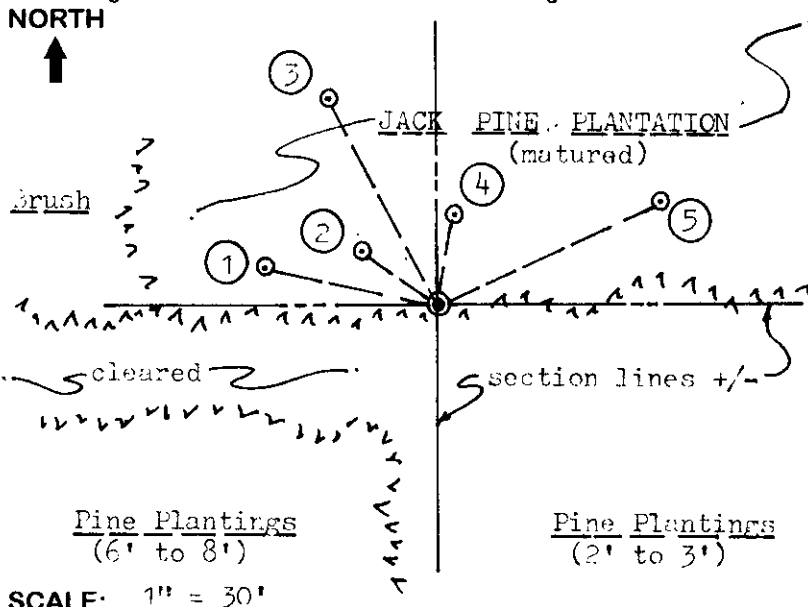
1987 maps drafted by W. Stuth of an Owens-Illinois survey of the East 1/2 of Section 14 in 1957 and another survey in Section 23 in 1963, indicate a monument "by others" at this corner and notation "no ties", filed in Oneida County records.

In 1976-77, Copp & others/Wisconsin DNR survey of the Bearskin Trail, Sheet 5 of 25, filed as Plat of Survey B-1400, Oneida County records, indicates a tie of N62°37'42"E 146.35' from the surveyed trail/railroad centerline PC #5 to a 2" I.P. at this section corner.

In 1978, Inman Plat of Survey filed as B-1056 in Oneida County records, indicates a 2" I.P. found in place at this corner. In 1981, Schmit Plat of Survey filed as B-3361 in Oneida Co. records, also notes a 2" I.P. found in place at this corner.

This corner recovery completed June 27, 1998; there were no witnesses.

Plan view map of monument location with bearing and distance ties to a minimum of four(4) described witness or reference monuments of concrete, natural stone, iron, live bearing trees or equivalent material. If applicable, also show a minimum of two(2) bearing and distance ties to any other monument found and not accepted; including the bearing and distance from the accepted monument. Indicate the basis for bearings of reference ties if not referenced to magnetic north.



WITNESS MONUMENT TIES:

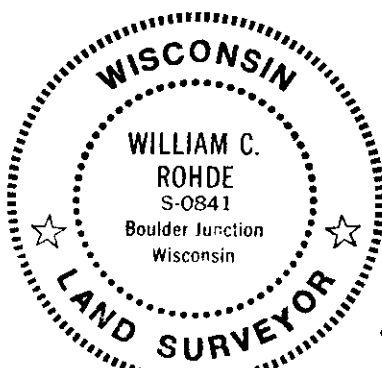
- ① New BT 5" Pj N77°W 27.74'.
- ② New BT 4" Pj N54°W 14.46'.
- ③ New BT 6" Pj N28°W 36.80'.
- ④ New BT 8" Pj N10°E 14.22' with yellow/black lettered No Hunting & No Trespass sign on SW face.
- ⑤ New BT 10" Pj N65°E 38.36'.

Note: Standard white poly 'T' marker post set 5" South of corner monument.

An old barbed wire fence line is down East & West of corner.

SCALE: 1" = 30'

Unless otherwise indicated, all bearing tree ties are to a .25" dia. by 2.5" long PK nail with a 1.25" dia. steel washer driven into unblazed right face and a .25" dia. by 2.5" long PK nail with a 2" dia. steel washer stamped 'BT' is also driven into unblazed face of bearing tree at DBH; the basis for measured bearings is magnetic to nearest degree and all tie distances are horizontal measure to nearest 1/100th feet.



LAND SURVEYOR CERTIFICATION:

I, William C. Rohde, hereby certify that I am a duly licensed Professional Land Surveyor in Wisconsin, that this USPLS monument location was determined by me or under my direction and control, and that this U.S. Public Land Survey Monument Location Record is true and correct to the best of my knowledge and belief.

William C. Rohde Date: 7-13-98
Signature

	2	3	

INDEX NO.

RLS SEAL

SHEET NO. 1 OF 1

This form is intended to fulfill requirements of Chapter A-E 7.08 (3)(a)(b)(c)(d)(e)(f)(g)(h)(i) U.S. Public Land Survey Monument Location Record, Wisconsin Administrative Code. Use reverse side for geodetic location data and/or continuation purposes.

SECTION LOCATION MAP

INDEX NO. N 17
3606150000

MAR 24 2023

KYLE J. FRANSON
REGISTER OF DEEDS

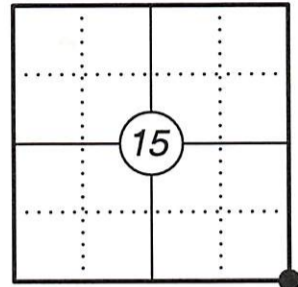
U.S. PUBLIC LAND SURVEY MONUMENT RECORD

This form is intended and designed to fulfill all requirements of Wisconsin Administrative Code, Chapter A-E 7.08 U.S. Public Land Survey Monument Record (3) (a)(b)(c)(d)(e)(f)(g)(h)(i). An additional sheet may be added if necessary to confirm with said requirements.

(a) Corner Location:

SE Corner Section 15
Township 36 North
Range 6 East
Town of Nokomis
County of Oneida

Corner ID: 3606150000



(b) History of Original Corner:

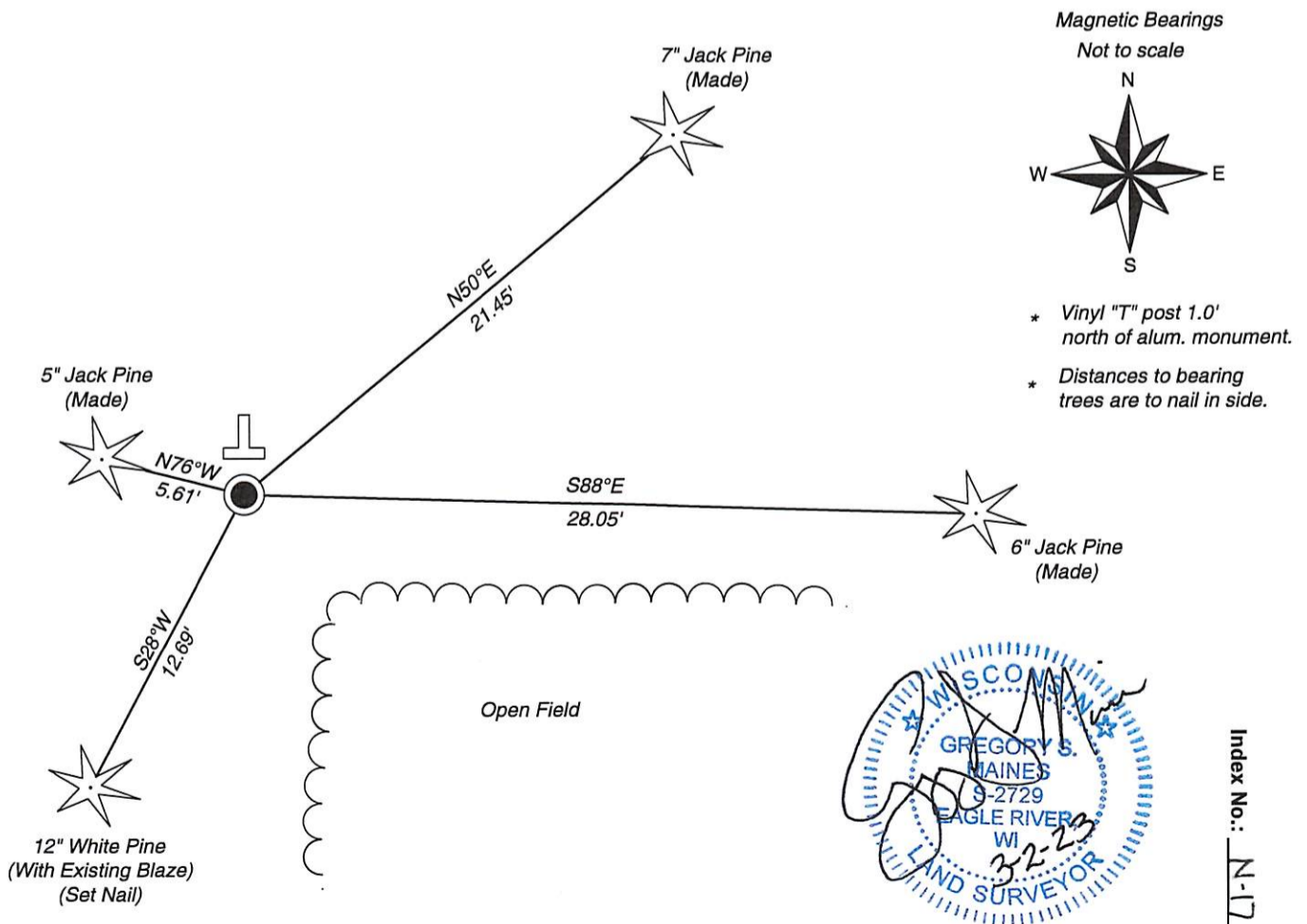
Original Surveyor: Joseph H. Jenkins Original B.T.'s: 10" Black Pine - S 77° W, 36 Links
8" Black Pine - N 42° W, 36 Links
Date of Survey: Oct. 13 - Oct. 28, 1862 8" Black Pine - N 59° E, 13 Links
8" Black Pine - S 48° E, 12 Links

(f)(g)(h) Description of monument found at this corner and if it was accepted, state all evidence (material, testimonial, occupational, plats, records, other monuments) used as a basis for establishing location. If reestablishing through lost corner proportionate methods, indicate all monuments, distances, and directions used to establish. Indicate type of monument and sign post found or set.

For corner history, see previous U.S. Public Land Survey Monument Record by William C. Rhode, dated July 13, 1998.

09/27/2022 - I found an Oneida County aluminum monument at the corner location. I did not find any bearing trees from previous monument record. I found one tree with an existing blaze and set three additional bearing trees as shown below.

(c)(d)(e) Plan view of corner with ties to at least four witnesses. If in disagreement with previously established corner, show the distances between the two corners and also indicate the tie to the disputed corner.



Certification

I, Gregory S. Maines, Professional Land Surveyor No. 2729, hereby certify that the corner location on this record was referenced by me or under my direction and control and that this U.S. Public Land Survey Monument Record is complete to the best of my knowledge and belief.