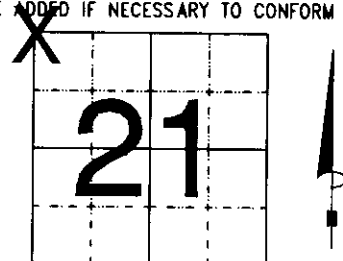


U.S. PUBLIC LAND SURVEY MONUMENT RECORD

NOTE: THIS FORM IS INTENDED AND DESIGNED TO FULFILL ALL REQUIREMENTS OF WISCONSIN ADMINISTRATIVE CODE, CHAPTER A-E 7.08 U.S. PUBLIC LAND SURVEY MONUMENT RECORD (3) (a) (b) (c) (d) (e) (f) (g) (h) (i). AN ADDITIONAL SHEET MAY BE ADDED IF NECESSARY TO CONFORM WITH SAID REQUIREMENTS.

(a) CORNER LOCATION: TOWNSHIP 36 NORTH
RANGE 6 EAST/~~WEST~~
TOWN/~~XXXXXX~~ NOKOMIS
COUNTY ONEIDA



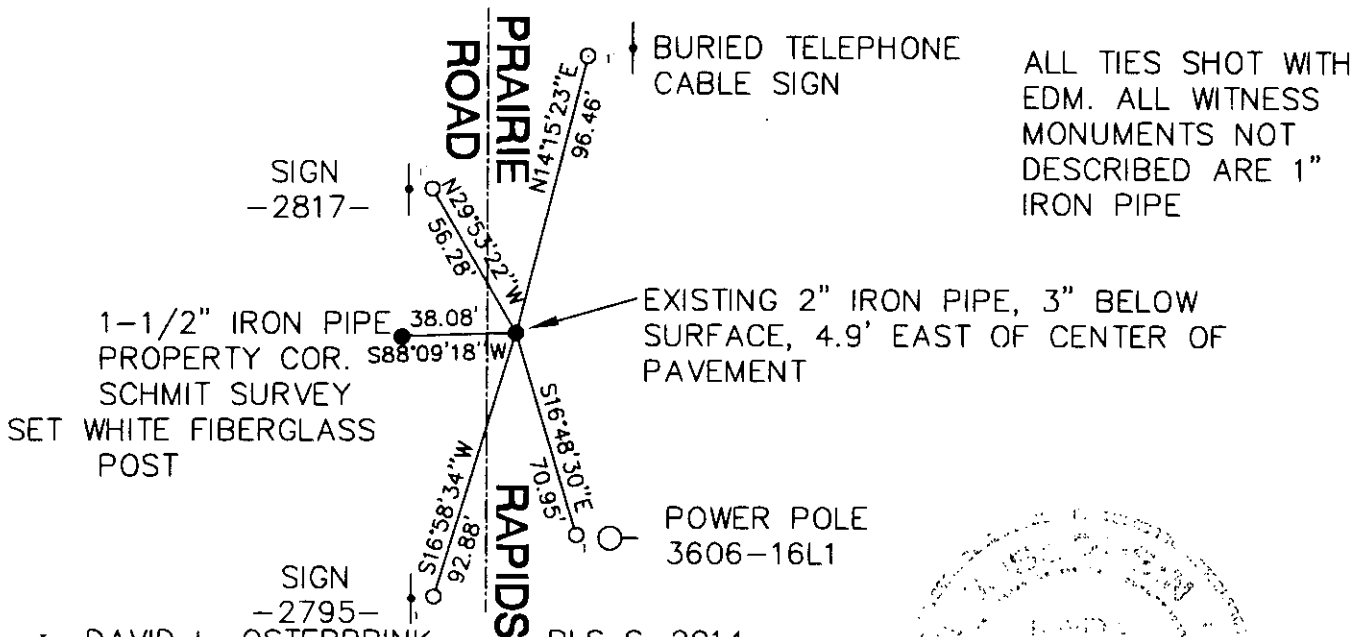
SECTION 21

(b) (f) (g) (h) DESCRIPTION OF MONUMENT FOUND AT THIS CORNER AND IF IT WAS ACCEPTED, STATE ALL EVIDENCE (MATERIAL, TESTIMONIAL, OCCUPATIONAL, PLATS, RECORDS, OTHER MONUMENTS) USED AS BASIS FOR ACCEPTING. IF NOT ACCEPTED OR IF NOTHING WAS FOUND, STATE EVIDENCE USED AS BASIS FOR ESTABLISHING LOCATION. IF REESTABLISHED THROUGH LOST CORNER PROPORTIONATE METHODS, INDICATE ALL MONUMENTS, DISTANCES AND DIRECTIONS USED TO ESTABLISH. INDICATE TYPE OF MONUMENT FOUND OR SET AND SIGN POST.

CORNER ORIGINALLY SET IN OCTOBER, 1862, BY JOSEPH JENKINS. A SECTION SUMMARY (B492) BY BARKER (S1682) FROM 1984, CALLS FOR A FOUND 2" IRON PIPE. A SECTION SUMMARY BY STUTH (S-1418) FROM 1986, CALLS FOR AN EXISTING IRON PIPE. A PLAT OF SURVEY BY SCHMIT (S-1192), FROM 1996 CALLS FOR A 2" IRON PIPE. ON 9-12-97, I FOUND A 2" IRON PIPE, 3" BELOW BLACKTOP SURFACE. USING THE SECTION SUMMARY BY STUTH OF SECTION 21, I AGREED WITH HIS DISTANCES, AND DETERMINED THE 2" IRON PIPE TO BE THE BEST EVIDENCE FOR THE CORNER. TIED OUT.

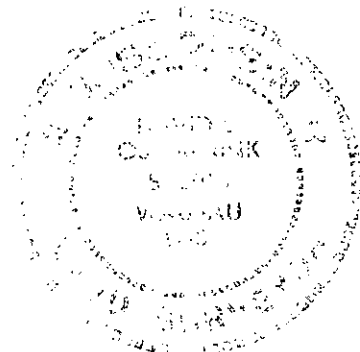
TRAVERSED SECTION 21 WITH A 1" TOTAL STATION, TURNING ANGELS TO STACKED TARGETS, SHOOTING DISTANCES BOTH WAYS. (OPEN END TRAVERSE)
CORNER IS 4.9 FEET EAST OF CENTER OF PAVEMENT.
SEE SECTION SUMMARY ON BACK.

(c) (d) (e) PLAN VIEW OF CORNER WITH TIES TO AT LEAST 4 WITNESS MONUMENTS. IF IN DISAGREEMENT WITH PREVIOUSLY ESTABLISHED CORNER, SHOW THE DISTANCES BETWEEN THE TWO CORNERS AND ALSO INDICATE THE TIES TO THE DISPUTED CORNER.



(i) I, DAVID L. OSTERBRINK RLS S-2014
(TYPE OR PRINT NAME) CERTIFY THAT THE CORNER LOCATION ON THIS RECORD WAS DETERMINED BY ME OR UNDER MY DIRECTION AND CONTROL AND THAT THIS U.S. PUBLIC LAND SURVEY MONUMENT RECORD IS CORRECT AND COMPLETE TO THE BEST OF MY KNOWLEDGE AND BELIEF.

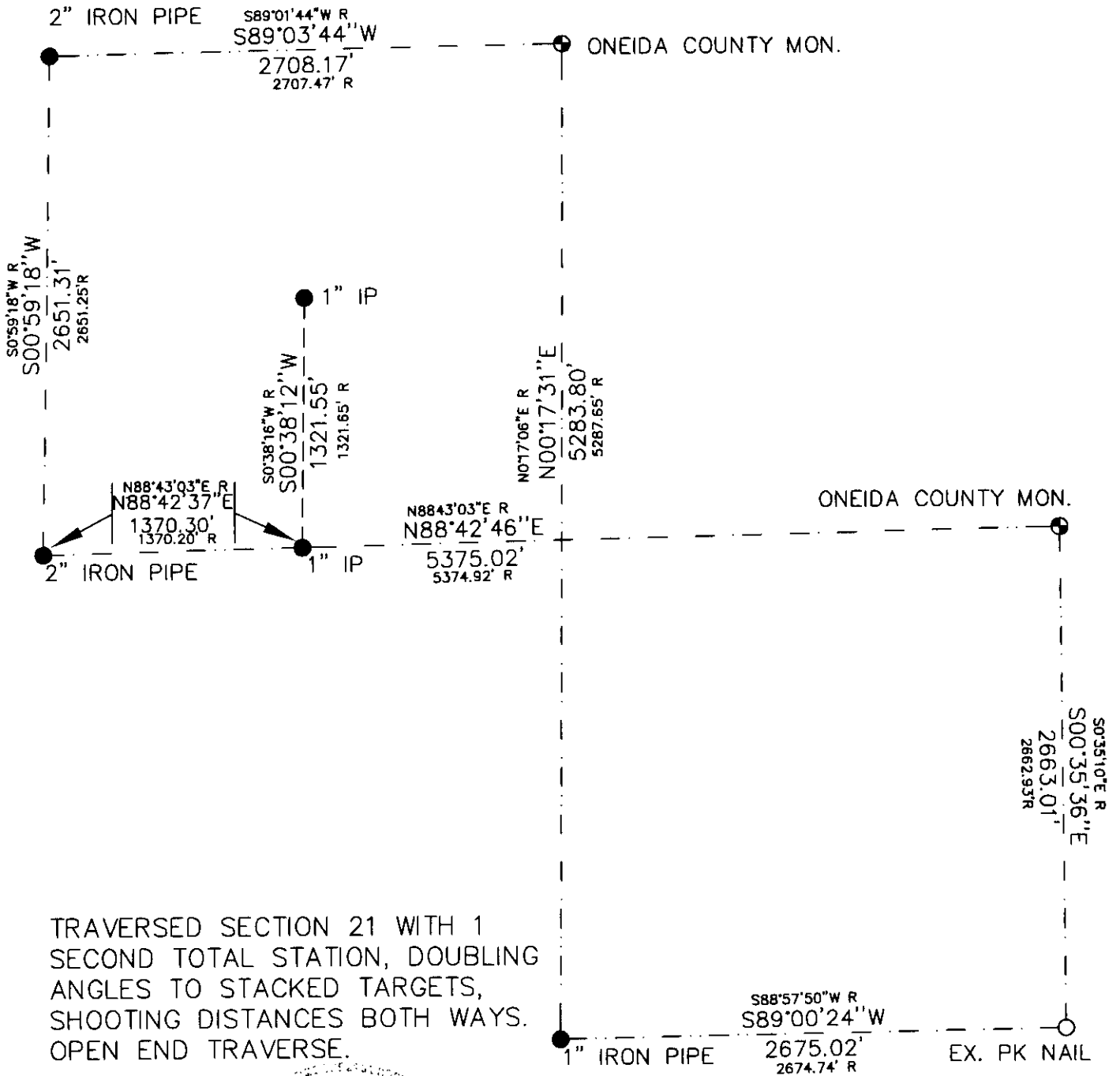
David L. Osterbrink
SIGNATURE DATE 9-22-97



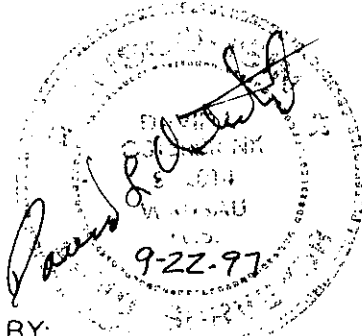
INDEX NO. N-9

SECTION SUMMARY

SECTION 21, TOWNSHIP 36 NORTH, RANGE 6 EAST,
TOWN OF NOKOMIS, ONEIDA COUNTY.

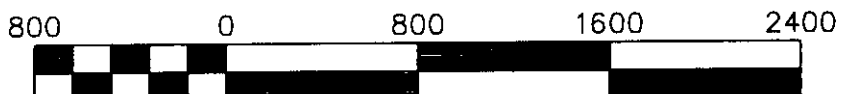
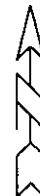


TRAVERSED SECTION 21 WITH 1
SECOND TOTAL STATION, DOUBLING
ANGLES TO STACKED TARGETS,
SHOOTING DISTANCES BOTH WAYS.
OPEN END TRAVERSE.



PREPARED BY:
NORTHWOODS SURVEYING
623 JEFFERSON STREET
WAUSAU, WI. 54403
715-845-1249

BEARINGS REFERENCED
TO WEST LINE NW 1/4
SECTION 21. ASSUMED
BEARING FROM SUTH
SECTION SUMMARY.
R (RECORD) DIMENSIONS
SHOWN ARE SUTH
MEASUREMENTS



Scale 1" = 800'