

At \_\_\_\_\_ O'Clock \_\_\_\_\_ M  
**THOMAS H. LEIGHTON**  
REGISTER OF DEEDS  
Recorders Data

This form is intended to fulfill the requirements of Chapter A-E7.08 (3)(a) thru (i) U.S. Public Land Survey Monument Location Record, Wisconsin Administrative Code. Use the reverse side of form for continuation.

**U.S. PUBLIC LAND SURVEY MONUMENT LOCATION RECORD**

USPLS CORNER: EAST WITNESS MC SECTION: 20 TOWNSHIP: 36 NORTH RANGE: 06 EAST

NAME OF WATERWAY FOR M.C. CORNER : PRAIRIE LAKE SECTION LINE: NORTH

~~(CITY)(VILLAGE)(TOWN)~~ OF: NOKOMIS COUNTY OF: ONEIDA

Description of monument found or placed and all other evidence used as the basis for monument location; including monuments and measurements required if the corner location was reestablished by lost corner proportionate methods. Also indicate name of the original surveyor, original survey date and the corner monument, bearing trees, witness or other reference monuments established, including measured bearing and distance ties, from available survey records.

In October 1862, Joseph H. Jenkins/GLO set a wood post as the original MC and noted OBTs: a 10" Pj S47°W 18 links and an 8" Pj N18°E 11 links; all are now obliterated.

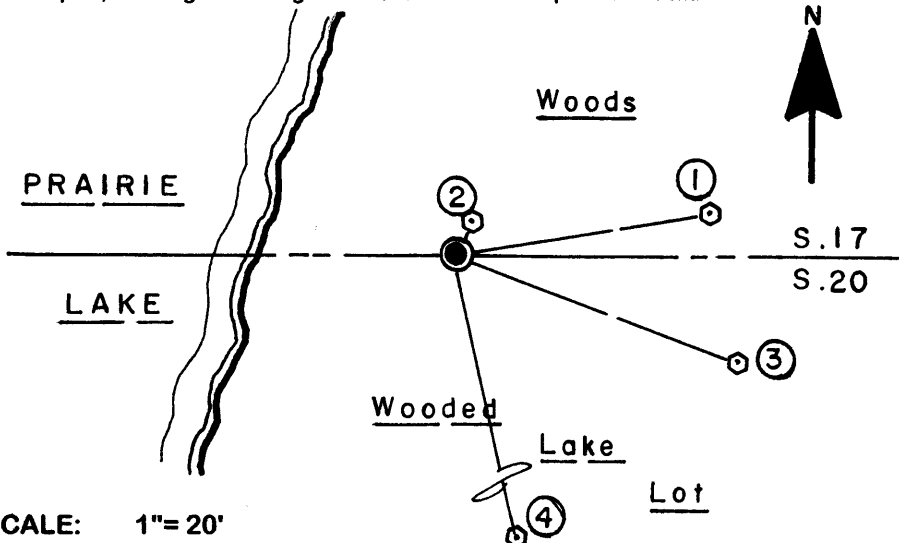
In July 1979, Lester Schmit/RLS 1192 set a 1.5" dia. iron pipe as this witness MC on the north line of Section 20 per his Plat of Survey filed as B-3348 in Oneida County survey records. I also found a 1/2" x 2.5" white wood marker stake with red top 6" West of the iron pipe.

In 1984, Glen Barker/RLS 1682 also retraced the north line of Section 20 per his Plat of Survey filed as B-492 in Oneida County survey records.

On June 16, 2006 I found the old 1.5" dia. iron pipe with uncapped top 6" above grade at this Witness MC on crown of bank about 20' East of existing brushy lakeshore bearing N20°+/- E. I left the old record iron pipe in place and drove a standard 2" dia. x 30" long aluminum pipe monument with stamped Oneida County cap over the iron pipe to 6" above grade for new ties shown below.

The Witness MC is located at the NW corner of an improved lake lot at Fire No. 2795 Prairie Lake Road. There were no direct witnesses.

Plan view map of monument location with bearing and distance ties to a minimum of four(4) described witness or reference monuments of concrete, natural stone, iron, live bearing trees or equivalent material. If applicable, also show a minimum of two(2) bearing and distance ties to any other monument found and not accepted; including the bearing and distance from the accepted monument.



**WITNESS MONUMENT TIES:**

- ① New 11" Pw BT N80°E 26.91'.
- ② New 5" Pr BT N28°E 3.48'.
- ③ New 13" Pr BT S69°E 31.37'.
- ④ New 11" Pr BT S13°E 33.90'.

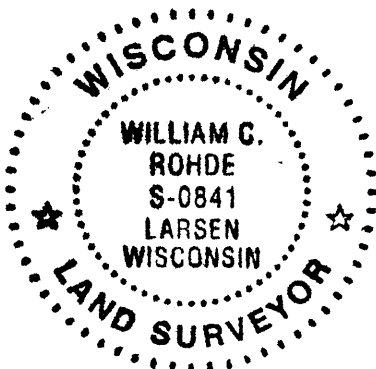
Standard white poly 'T' marker post set 9" West of corner monument.

Only monument and 'T' post flagged with blaze orange tape.

SCALE: 1" = 20'

Unless otherwise indicated, all bearing tree ties are to a .25" dia. by 2.5" long PK nail with a 1.25" dia. steel washer driven into unblazed right face and a .25" dia. by 2.5" long PK nail with a 2" dia. steel washer stamped BT is also driven into unblazed face of bearing tree at DBH; the basis for measured bearings is by compass to nearest degree and all tie distances are measured horizontal by steel tape corrected to nearest 1/100th feet at standard temperature of 68° F.

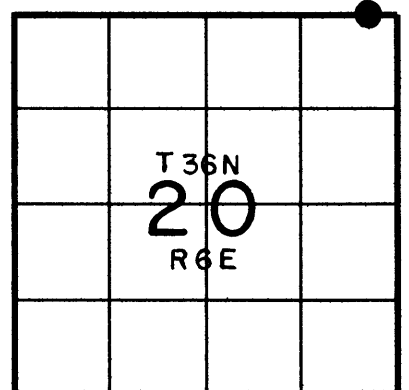
**RLS SEAL:**



**LAND SURVEYOR CERTIFICATE:**

I, William C. Rohde, hereby certify that I am duly licensed as a Professional Land Surveyor in the State of Wisconsin; that this USPLS monument location was determined by me and/or under my direct supervision and control; and that this U.S. Public Land Survey Monument Location Record is true and correct to the best of my knowledge and belief.

Signed: *William C. Rohde*  
William C. Rohde RLS 841



**SECTION LOCATION MAP**

INDEX NO. N 8-9  
3606170003