

U.S. PUBLIC LAND SURVEY MONUMENT LOCATION RECORD

Recorders Data

CORNER: NW Section SECTION: 28 TOWNSHIP 36 NORTH RANGE 6 EAST/WEST

FOR M.C. CORNER INDICATE: NAME OF WATERWAY N/A SECTION LINE N/A

~~(CITY)~~(VILLAGE)(TOWN) OF: Nokomis COUNTY OF: Oneida

Description of monument found or placed and all other evidence used as a basis for monument location; including all monuments and related measurements required if the corner location is reestablished by lost corner proportionate methods. Also indicate name of original surveyor, survey date, corner monument set and established bearing trees, witness or reference monuments with ties from available records.

Found a PK nail in blacktop pavement surface at this corner location with orange paint ring recently by Austin for Oneida Co. GPS acquisition project; I carefully referenced the PK and chiseled a 5" dia. hole thru the blacktop to reveal the undisturbed battered top of an old 2" dia. iron pipe monument which I accepted at this corner, 2" below pavement surface. As an aid to future recovery and usage, I drove 3/4" dia. by 2 1/2" long PK spikes in the blacktop 12" North, South, East and West of the corner monument center on right lines; I marked the center of old 2" iron pipe with a new 60d spike in place of an older 1" long PK found. No other metal evidence observed or detected within the nearby roadway intersection area by magnetic locator other than an old power pole guy anchor about 45' NE off edge of existing blacktop turning radius. Corner is 1 1/2' South of E/W road mat center and 2' West of road mat center No.

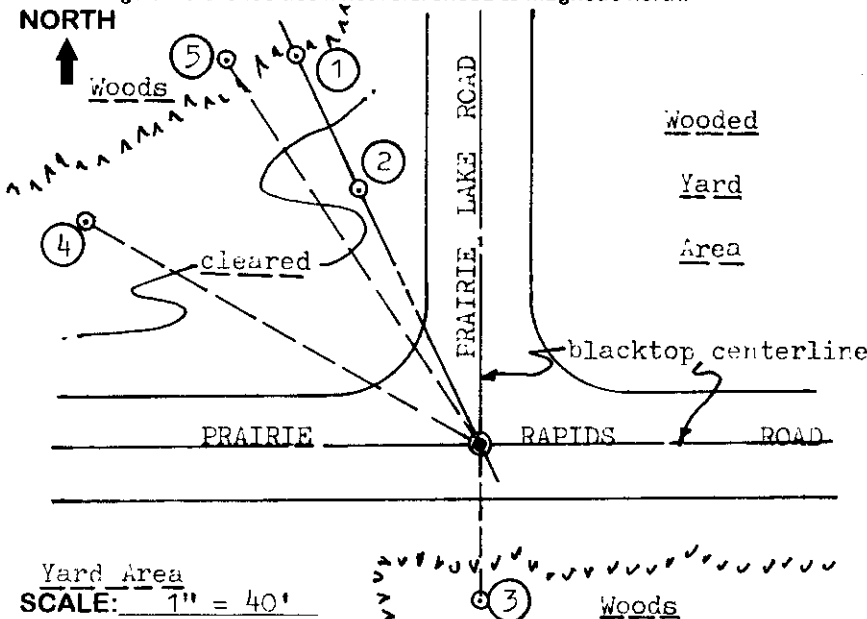
In 1862, Jenkins/GLO set a wood post as the original corner location and marked BTs, a 20" Py S72°E 340 lks and a 7" Pb(Pj) N08°W 135 lks, all of which are now obliterated or unreliable remains for location purposes.

In 1984, Barker/Consolidated Papers, indicated a 2" dia. iron pipe at this corner per map legend on his Section Subdivision Plat of Survey B-492, Oneida County records.

This recovery completed June 23, 1998; there were no witnesses other than vehicle drive-bys. Standard white poly 'T' marker post also found 15" East of Witness No. 1.

Plan view map of monument location with bearing and distance ties to a minimum of four(4) described witness or reference monuments of concrete, natural stone, iron, live bearing trees or equivalent material. If applicable, also show a minimum of two(2) bearing and distance ties to any other monument found and not accepted; including the bearing and distance from the accepted monument. Indicate the basis for bearings of reference ties if not referenced to magnetic north.

NORTH



WITNESS MONUMENT TIES:

- ① Standard 2" dia. aluminum pipe monument found with Oneida Co. cap stamped by Barker, RLS 1682 in 1993 flush with grade N25°W 96.00'.
- ② 1" dia. by 24" long iron pipe set with standard Reference Mark cap flush N25°W 58.87' on right line from corner to Witness No. 1.
- ③ Old 2" dia. property corner pipe found 1" above grade South 33.00'.
- ④ Old BT 20" Pw N60°W 95.26' with upper and lower blazes plain, scribed and painted blue.
- ⑤ New BT 20" Pr N33°W 96.05'.

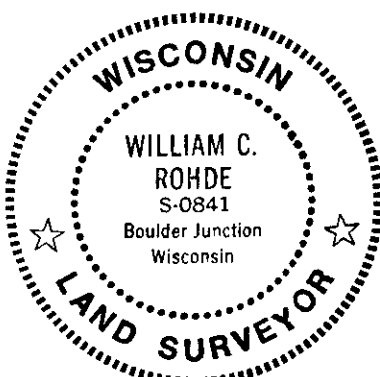
Yard Area
SCALE: 1" = 40'

Unless otherwise indicated, all bearing tree ties are to a .25" dia. by 2.5" long PK nail with a 1.25" dia. steel washer driven into unblazed right face and a .25" dia. by 2.5" long PK nail with a 2" dia. steel washer stamped 'BT' is also driven into unblazed face of bearing tree at DBH; the basis for measured bearings is magnetic to nearest degree and all tie distances are horizontal measure to nearest 1/100th feet.

LAND SURVEYOR CERTIFICATION:

I, William C. Rohde, hereby certify that I am a duly licensed Professional Land Surveyor in Wisconsin, that this USPLS monument location was determined by me or under my direction and control, and that this U.S. Public Land Survey Monument Location Record is true and correct to the best of my knowledge and belief.

William C. Rohde Date: 6-25-98
Signature



RLS SEAL

SHEET NO. 1 OF 1

This form is intended to fulfill requirements of Chapter A-E 7.08 (3)(a)(b)(c)(d)(e)(f)(g)(h)(i) U.S. Public Land Survey Monument Location Record, Wisconsin Administrative Code. Use reverse side for geodetic location data and/or continuation purposes.

		28	

INDEX NO.

SECTION LOCATION MAP

INDEX NO. R 9

3606 200000