

# U.S. PUBLIC LAND SURVEY MONUMENT LOCATION RECORD

Recorders Data

CORNER: North 1/4 SECTION: 29 TOWNSHIP 36 NORTH RANGE 6 EAST/WEST

FOR M.C. CORNER INDICATE: NAME OF WATERWAY N/A SECTION LINE N/A

(CITY)(VILLAGE)(TOWN) OF: Nokomis COUNTY OF: Oneida

Description of monument found or placed and all other evidence used as a basis for monument location; including all monuments and related measurements required if the corner location is reestablished by lost corner proportionate methods. Also indicate name of original surveyor, survey date, corner monument set and established bearing trees, witness or reference monuments with ties from available records.

I found a PK nail in blacktop pavement at corner location with orange ring painted around it recently by Austin for Oneida Co. GPS acquisition project. I carefully referenced the PK prior to removal and chiseled a 5" dia. hole thru pavement to reveal the top of undisturbed 2" dia. iron pipe 4" below pavement surface, which I accepted as the corner monument. I set 1/4" dia. by 2 1/2" long PK spikes 12" North, South, East and West of the corner center and on right lines in the pavement to aid future recovery and usage. A 60d spike was also found in the top center of the old iron pipe as a centering point. The corner falls 3' West of road mat centerline North, on the centerline of East/West road mats and 1' West of road mat center South. In 1862, Jenkins/GLO set a wood post as the original corner and marked BTs, an 8" Pb (Pj) OBT N51°W 37 lks and an 8" Pb(Pj) OBT S09°E 19 lks, which are all now obliterated in existing roadway.

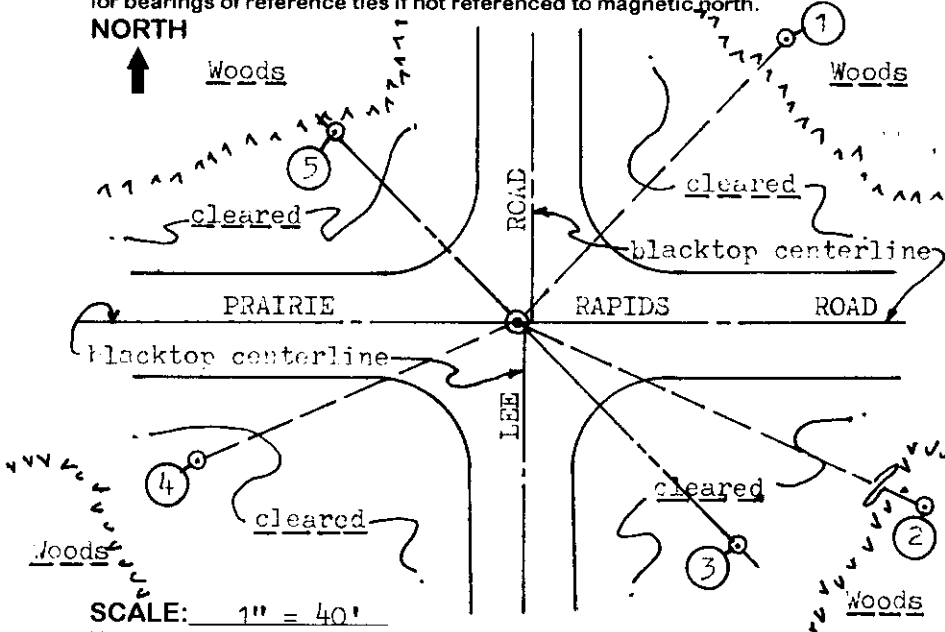
In 1984, Barker/Consolidated Papers, indicates a 2" dia. iron pipe at this corner by map legend, per his Section Subdivision Plat of Survey B-492 in Oneida County records. I found nor detected no other metallic evidence within the existing roadway intersection area with magnetic locator.

This recovery completed June 23, 1998; there were no witnesses other than vehicle drive-bys.

Aluminum capped reference by Barker, RLS 1682 in 1993 is 3" above existing grade at (5). I also found a standard white poly 'T' marker post 10" NW of same.

Plan view map of monument location with bearing and distance ties to a minimum of four(4) described witness or reference monuments of concrete, natural stone, iron, live bearing trees or equivalent material. If applicable, also show a minimum of two(2) bearing and distance ties to any other monument found and not accepted; including the bearing and distance from the accepted monument. Indicate the basis for bearings of reference ties if not referenced to magnetic north.

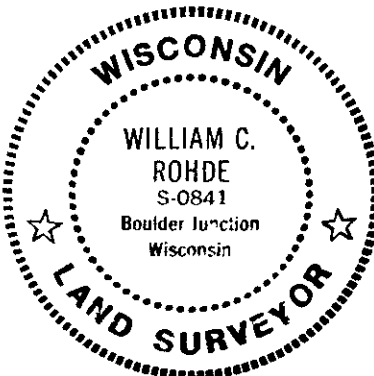
NORTH



**WITNESS MONUMENT TIES:**

- ① Old BT 15" Pr N43°E 81.19' with blue painted upper & lower blazes open & scribed.
- ② Old BT 24" Pr S65°E 120.40' with blue painted blaze above root crown open & scribed; old 60d spike in left face.
- ③ 1" dia. by 30" long iron pipe set with standard Reference Mark cap flush S44°E 65.36'.
- ④ Old BT 23" Pr S67°W 72.79' with large blaze above root crown open, scribed and painted blue.
- ⑤ Standard 2" dia. aluminum pipe found with stamped Oneida Co. cap by Barker/1993 at N44°W 54.96'(55').

Unless otherwise indicated, all bearing tree ties are to a .25" dia. by 2.5" long PK nail with a 1.25" dia. steel washer driven into unblazed right face and a .25" dia. by 2.5" long PK nail with a 2" dia. steel washer stamped 'BT' is also driven into unblazed face of bearing tree at DBH; the basis for measured bearings is magnetic to nearest degree and all tie distances are horizontal measure to nearest 1/100th feet.



**LAND SURVEYOR CERTIFICATION:**

I, William C. Rohde, hereby certify that I am a duly licensed Professional Land Surveyor in Wisconsin, that this USPLS monument location was determined by me or under my direction and control, and that this U.S. Public Land Survey Monument Location Record is true and correct to the best of my knowledge and belief.

*William C. Rohde* Date: 6-25-98  
Signature

		29	

INDEX NO.

RLS SEAL

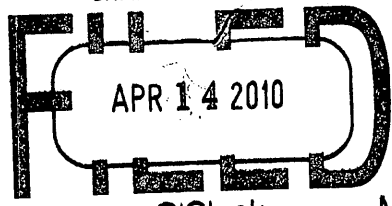
SHEET NO. 1 OF 1

This form is intended to fulfill requirements of Chapter A-E 7.08 (3)(a)(b)(c)(d)(e)(f)(g)(h)(i) U.S. Public Land Survey Monument Location Record, Wisconsin Administrative Code. Use reverse side for geodetic location data and/or continuation purposes.

SECTION LOCATION MAP

INDEX NO. R 7

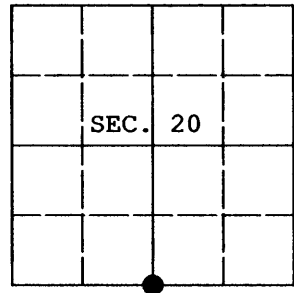
3606200020



U.S. PUBLIC LAND SURVEY MONUMENT RECORD

Note: This form is intended and designed to fulfill the requirements of Wisconsin Administrative Code, Chapter A-E 7.08 U.S. Public Land Survey Monument Record (3) (a) (b) (c) (d) (e) (f) (g) (h) (i). An additional sheet may be added if necessary to conform with said requirements.

(a) CORNER LOCATION: Plane Coordinates
1/4 Cor. of Secs. 20 & 29 X:
Township 36 North Y:
Range 6 East of the 4th P.M. Datum:
Town of Nokomis County of Oneida



(b) HISTORY OF ORIGINAL CORNER ESTABLISHMENT

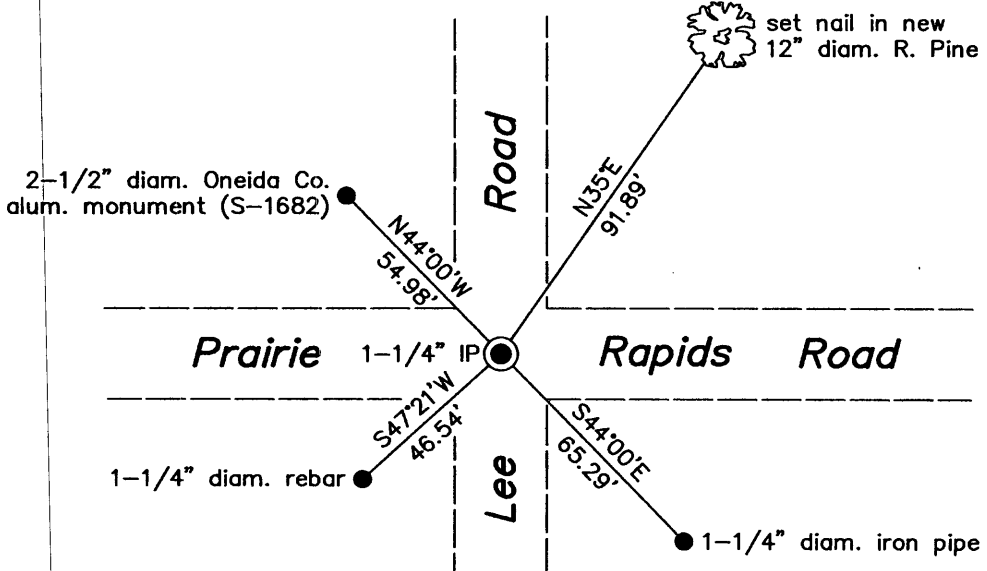
Original Surveyor: Joseph Jenkins Original Accessories:
Date of Survey: Commenced October, 1862 B. Pine 8" N.51°W., 37 lks.
Completed October, 1862 B. Pine 8" S.9°E., 19 lks.

(b) (f) (g) (h) Description of monument found at this corner and if it was accepted, state all evidence (material, testimonial, occupational, plats, records, other monuments) used as a basis for accepting. If not accepted or if nothing was found, state evidence used as basis for establishing location. If re-established through lost corner proportionate methods, indicate all monuments, distances and directions used to establish. Indicate type of monument and sign post found or set.

NOTE: This is a perpetuation of a previous USPLS Monument Record by William C. Rohde, RLS dated June 25, 1998 and filed in the office of the Oneida County Register of Deeds. A complete history of the corner can be found on the previous monument record. I accept the previous location as a true and faithful perpetuation or reestablishment of the original corner location and further perpetuate it as follows.

November 7, 2009: I found and accepted Rohde's monument, a 1-1/4 ins. diam. iron pipe under the pavement. All of Rohde's trees are either dead or have been recently cut. I established new accessories as shown below and set a white plastic sign post adjacent to the NW reference monument.

(c) (d) (e) Plan view of corner with ties to at least 4 witness monuments. If in disagreement with previously established corner, show the distances between the two corners and also indicate the ties to the disputed.



(i) I, Jeffrey W. Austin, Registered Land Surveyor No. S-1885, hereby certify upon honor that the corner location on this record was determined by me or under my direction and control and that this U.S. Public Land Survey Monument Record is correct and complete to the best of my knowledge and belief.



INDEX NO. R-7

Signature

MAR. 30, 2010 Date

3606 20 0020