

# U.S. PUBLIC LAND SURVEY MONUMENT RECORD

NOTE: THIS FORM IS INTENDED AND DESIGNED TO FULFILL ALL REQUIREMENTS OF WISCONSIN ADMINISTRATIVE CODE, CHAPTER A-E 7.08 U.S. PUBLIC LAND SURVEY MONUMENT RECORD (3) (a) (b) (c) (d) (e) (f) (g) (h) (i). AN ADDITIONAL SHEET MAY BE ADDED IF NECESSARY TO CONFORM WITH SAID REQUIREMENTS.

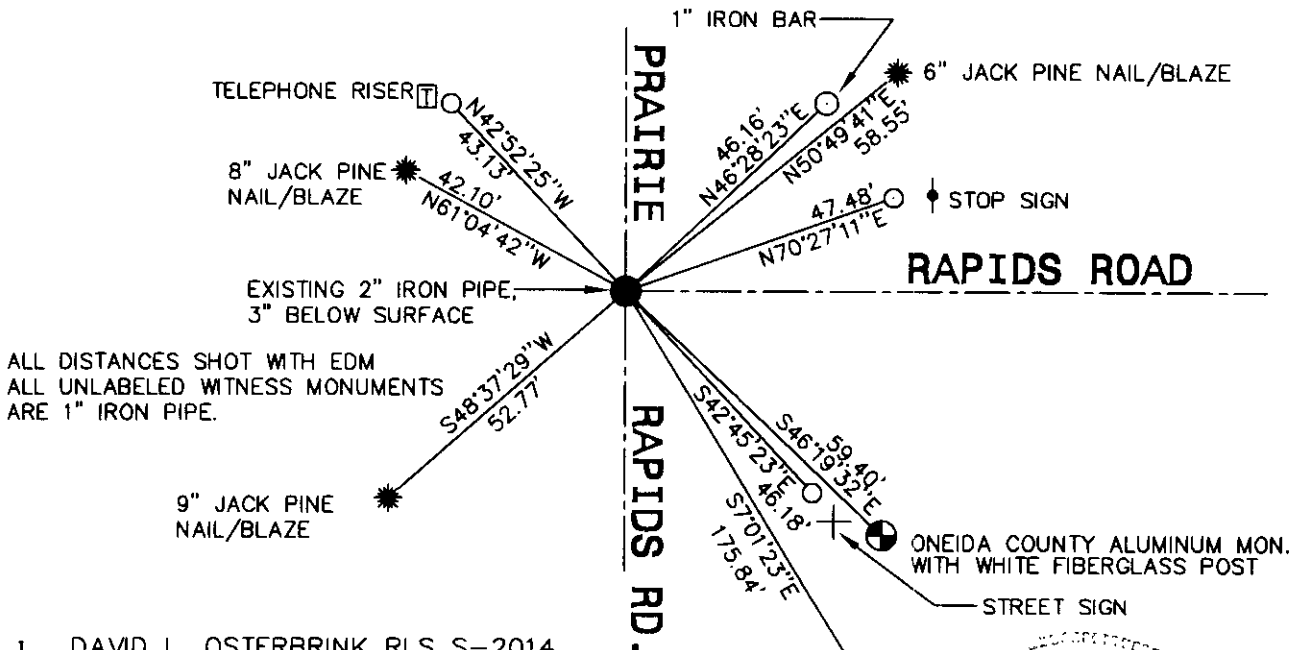
(a) CORNER LOCATION: TOWNSHIP 36 NORTH  
 RANGE 6 EAST/WEST  
 TOWN/~~XXX/VILLAGE~~ NOKOMIS  
 COUNTY ONEIDA



SECTION 21

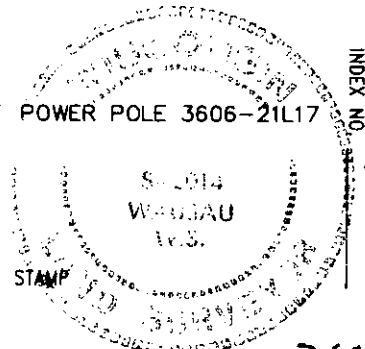
(b) (f) (g) (h) DESCRIPTION OF MONUMENT FOUND AT THIS CORNER AND IF IT WAS ACCEPTED, STATE ALL EVIDENCE (MATERIAL, TESTIMONIAL, OCCUPATIONAL, PLATS, RECORDS, OTHER MONUMENTS) USED AS BASIS FOR ACCEPTING. IF NOT ACCEPTED OR IF NOTHING WAS FOUND, STATE EVIDENCE USED AS BASIS FOR ESTABLISHING LOCATION. IF REESTABLISHED THROUGH LOST CORNER PROPORTIONATE METHODS, INDICATE ALL MONUMENTS, DISTANCES AND DIRECTIONS USED TO ESTABLISH. INDICATE TYPE OF MONUMENT FOUND OR SET AND SIGN POST. CORNER ORIGINALLY SET IN OCTOBER, 1862, BY JOSEPH JENKINS. A SECTION SUMMARY (B492) BY BARKER (S1682) FROM 1984, CALLS FOR A FOUND 1-1/2" IRON PIPE. A SECTION SUMMARY BY STUTH (S-1418) FROM 1986, CALLS FOR AN EXISTING IRON PIPE. A PLAT OF SURVEY BY SCHMIT (S-1192), FROM 1996 CALLS FOR A 2" IRON PIPE. ON 9-12-97, I FOUND A 2" IRON PIPE, 3" BELOW BLACKTOP SURFACE. I ALSO FOUND A RAIL ROAD SPIKE, 0.6' WEST OF PIPE. USING THE SECTION SUMMARY BY STUTH OF SECTION 21, I AGREED WITH HIS DISTANCES, AND DETERMINED THE 2" PIPE TO BE THE CORNER. THERE IS NO CORNER TIE OF RECORD. THIS CORNER WAS TIED OUT WITH THREE BLAZED JACK PINE TREES, MEASURED TO 60 D NAILS AT BASE, AND ONE ONEIDA COUNTY ALUMINUM MONUMENT, STAMPED BY S-1662. THE TIE DISTANCE WAS TO THE RAIL ROAD SPIKE. I XXX'D OUT THE INCORRECT DISTANCE OF 60.00' AND ADDED THE CORRECT DISTANCE OF 59.40'. SET ADDITIONAL WITNESS CORNERS, USED THE ORIGINAL BLAZED TREES. (TIED OUT IN 1994). TRAVERSED SECTION 21 WITH 1 SECOND TOTAL STATION, TURNING ANGLES TO STACKED TARGETS AND SHOOTING DISTANCES BOTH WAYS. OPEN END TRAVERSE. SEE SECTION SUMMARY ON BACK.

(c) (d) (e) PLAN VIEW OF CORNER WITH TIES TO AT LEAST 4 WITNESS MONUMENTS. IF IN DISAGREEMENT WITH PREVIOUSLY ESTABLISHED CORNER, SHOW THE DISTANCES BETWEEN THE TWO CORNERS AND ALSO INDICATE THE TIES TO THE DISPUTED CORNER.



(i) I, DAVID L. OSTERBRINK RLS S-2014  
 (TYPE OR PRINT NAME) CERTIFY THAT THE CORNER LOCATION ON THIS RECORD WAS DETERMINED BY ME OR UNDER MY DIRECTION AND CONTROL AND THAT THIS U.S. PUBLIC LAND SURVEY MONUMENT RECORD IS CORRECT AND COMPLETE TO THE BEST OF MY KNOWLEDGE AND BELIEF.

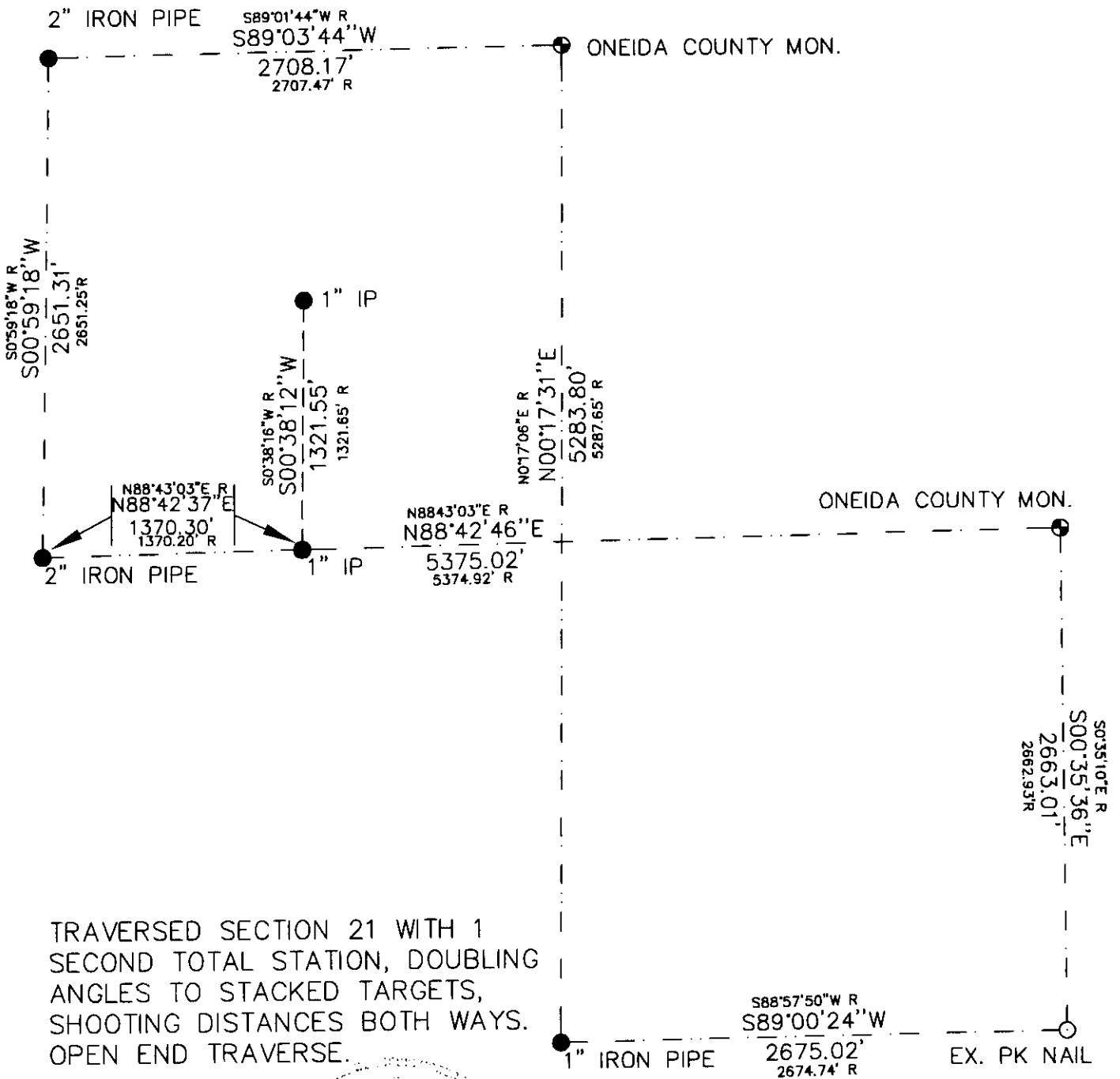
David L. Osterbrink 9-22-97  
 SIGNATURE DATE



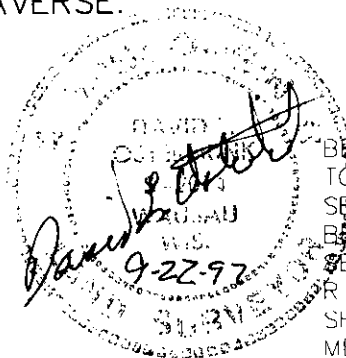
3606202000

# SECTION SUMMARY

SECTION 21, TOWNSHIP 36 NORTH, RANGE 6 EAST,  
TOWN OF NOKOMIS, ONEIDA COUNTY.



TRAVERSED SECTION 21 WITH 1  
SECOND TOTAL STATION, DOUBLING  
ANGLES TO STACKED TARGETS,  
SHOOTING DISTANCES BOTH WAYS.  
OPEN END TRAVERSE.



BEARINGS REFERENCED  
TO WEST LINE NW 1/4  
SECTION 21. ASSUMED  
BEARING FROM SUTH  
SECTION SUMMARY  
R (RECORD) DIMENSIONS  
SHOWN ARE SUTH  
MEASUREMENTS



PREPARED BY:  
NORTHWOODS SURVEYING  
623 JEFFERSON STREET  
WAUSAU, WI. 54403  
715-845-1249



Scale 1" = 800'