

Stock No. 26273

CERTIFIED LAND CORNER RESTORATION

State of Wisconsin }  
County of Oneida } ss.

I, John H. Fisher, do hereby certify that on the 12 day of July, 19 83, I found evidence of the north one quarter corner of Section 28 Township 36 North, Range 6 East, Fourth Principal Meridian, as described hereon; and that from this evidence I established ~~a new monument and~~ accessories as described hereon to perpetuate the original location of this corner:

Description of original monument and accessories and subsequent restorations:

The original Government survey was performed by Joseph H. Jinkines, Deputy Surveyor in October 1862.

Set Wood post

Black Pine	8"	N69°E	10 links
Black Pine	8"	S32°E	10 links

Description of corner evidence found:

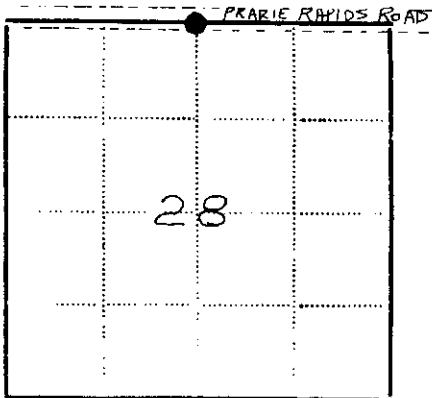
1" iron pipe in centerline of Prairie Rapids Road

Jack Pine	12"	N32°E	53.3 feet (set PK in)
Jack Pine	12"	N28°W	79.2 feet (set PK in)

Description of monument and accessories I established to perpetuate the location of this corner:

Corner in good condition

2" iron pipe		S44°E	46.68 feet
2" iron pipe with road sign		S40°W	51.80 feet



Resident witnesses..... None .....

Dated at Minocqua Wisconsin, this 29 day of July 19 83.

Signature *John H. Fisher* Title Registered Land Surveyor  
(County Surveyor, Registered Land Surveyor, or other duly authorized official)

Surveyors Registration No. ....

Office of Register of Deeds County of Oneida

I hereby certify that the within instrument was filed in this office for record on the 11 day of June 1986, and was filed in Book No. .... Page No. .... of County Records.

Signature *Doris Verga Kuhn* Title Register of Deeds  
*Cynthia A. Pitts Deputy*

Township ....., Range ....., Section ....., Index No. .... Page No. ....

2-11

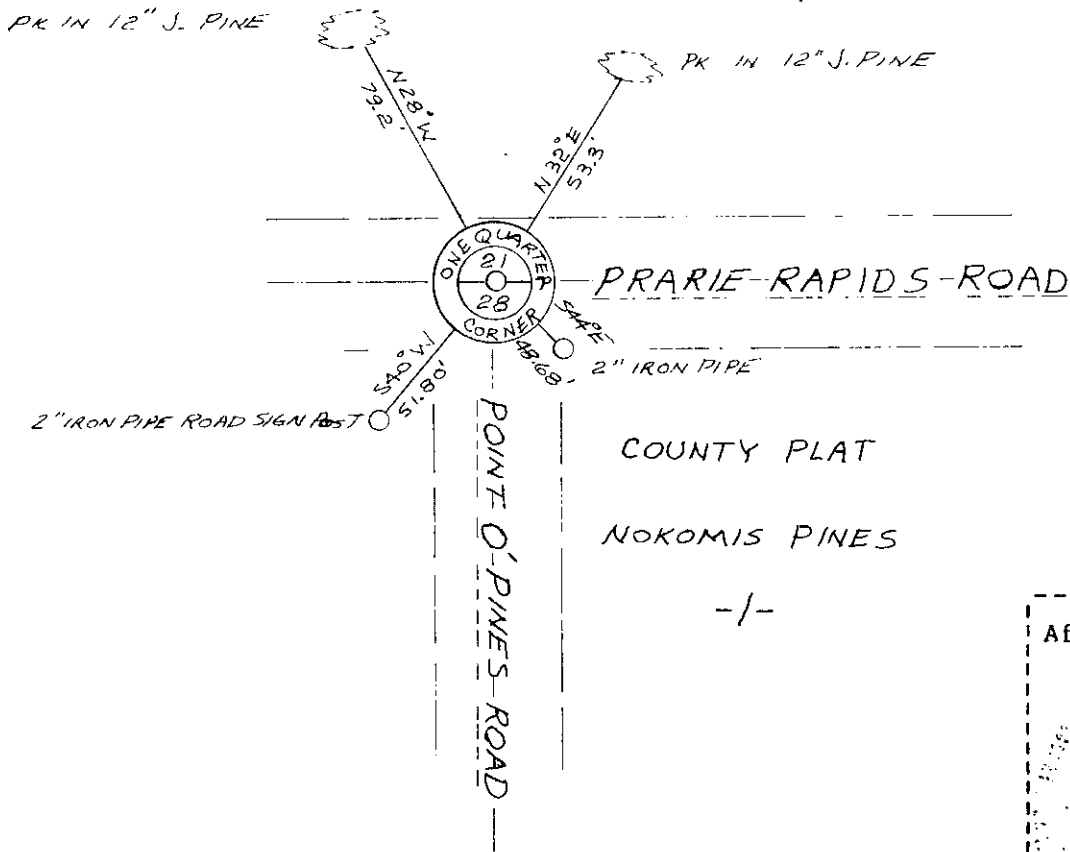
(c) Describe any material discrepancy between the location of the corner as restored or reestablished and the location of that corner as previously restored or reestablished by distance and direction. Show the discrepancy on the plan view drawing under (d), above. Show the distances between the corner as previously restored or reestablished and (1) the corner as restored or reestablished, and (2) to at least 2 of the witness monuments shown on the drawing in (d), above.

See drawing below

(f) Was the corner restored through acceptance of (1) an obliterated evidence location, or, (2) a found perpetuated location?

Found perpetuated location

(g&h) Was the corner reestablished through lost corner proportionate methods? If so, show the method, including the directions and distances to other public land survey corners used as evidence or used for proportioning in determining the corner location?



COUNTY PLAT  
 NOKOMIS PINES  
 -/-



(i) I, John H. Fisher  
 (type or print name) certify that the corner location shown on this record was determined by me or under my direction and control and that this U.S. Public Land Survey Monument Record is correct and complete to the best of my knowledge and belief.

John H. Fisher  
 Signature

7/29/83  
 Date