

CERTIFIED LAND CORNER RESTORATION
U. S. PUBLIC LAND SURVEY MONUMENT RECORD

History of original corner establishment:
The original Government survey was performed by Joseph H. Jenkins
Deputy Surveyor in October of 1862

Wood post set:

Yellow Pine	12"	N41°E	92 links
Yellow Pine	14"	S 9°E	79 links
Yellow Pine	10"	S 7°W	19 links
Yellow Pine	10"	N63°W	11 links

Description of corner evidence found:
1" iron pipe in centerline of Lake Nokomis Road

Norway Pine	12"	S19°E	31.50 feet
Norway Pine	10"	S28°W	39.25 feet

Description of monument and accessories I established to perpetuate the original location of this corner.
Corner in good condition

Set nail in bearing trees by others

Norway Pine	12"	S19°E	31.50 feet
Norway Pine	10"	S28°W	39.25 feet

Set nail in new bearing trees

Power pole	S55°W	37.70 feet
Hanse Drive sign post	N40°E	49.79 feet

Dated at Minocqua Wis. this 27th day of August, 1984.

Signature: *John H. Fisher* Title: Registered Land Surveyor Registration No. S-836
(County Surveyor, Registered Land Surveyor, or other duly authorized official)

Office of Register of Deeds, County of Oneida, I hereby certify that the within instrument was filed in this office for record on the 27th day of August, 1984 at 11 o'clock A.M. (Register of Deeds)

By: _____ Deputy

State of Wisconsin } ss.
County of Oneida }

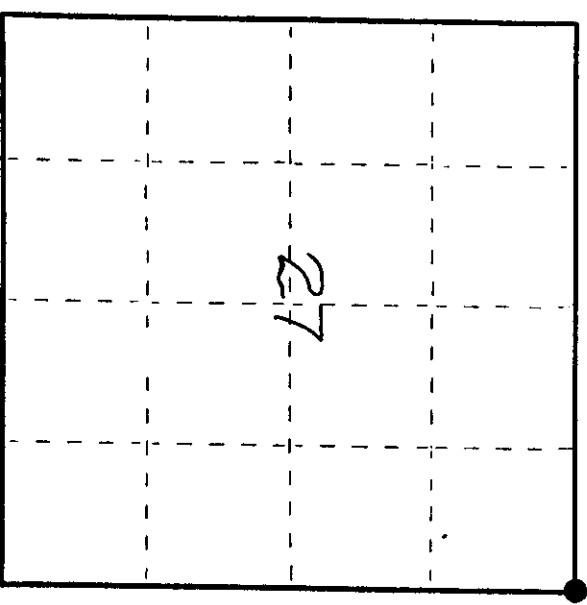
I, John H. Fisher, do hereby certify that on the 21st day of February, 1984, I found evidence of the Northeast corner of Section 27 Township 36 East, Fourth Principal Meridian, as described hereon, and that from this evidence I established a new monument and accessories as described hereon to perpetuate the original location of this corner.

Resident witnesses:

None

Stock No. 26273

Stock No. 26272



● = Corner monument restored.

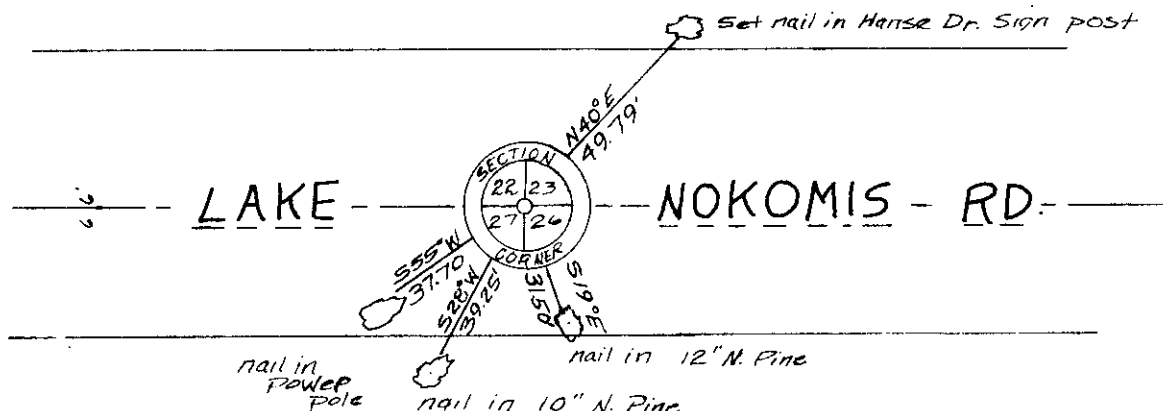
(c) Describe any material discrepancy between the location of the corner as restored or reestablished and the location of that corner as previously restored or reestablished by distance and direction. Show the discrepancy on the plan view drawing under (d), above. Show the distances between the corner as previously restored or reestablished and (1) the corner as restored or reestablished, and (2) to at least 2 of the witness monuments shown on the drawing in (d), above.

See sketch below

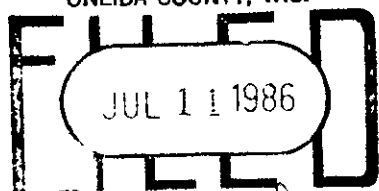
(f) Was the corner restored through acceptance of (1) an obliterated evidence location, or, (2) a found perpetuated location?

Found perpetuated location

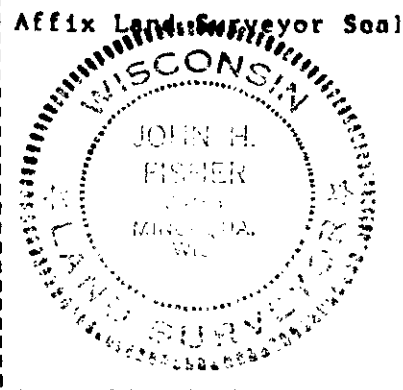
(g&h) Was the corner reestablished through lost corner proportionate methods? If so, show the method, including the directions and distances to other public land survey corners used as evidence or used for proportioning in determining the corner location?



REGISTER OF DEEDS OFFICE
ONEIDA COUNTY, WIS.



At 8:00 O'clock A.M.
DORIS VERAGE KUEHN
REGISTER OF DEEDS



(1) I, John H. Fisher
(type or print name) certify that the corner location shown on this record was determined by me or under my direction and control and that this U.S. Public Land Survey Monument Record is correct and complete to the best of my knowledge and belief.

John H. Fisher
Signature

8/20/84
Date