

Stock No. 26273

Stock No. 26272

State of Wisconsin

County of Oneida } ss.

I, John H. Fisher, do hereby certify that on the 21st day of February, 1984, I found evidence of the North one quarter corner of Section 27 Township 36 North, Range 6 East, Fourth Principal Meridian, as described hereon; and that from this evidence I established a new monument and accessories as described hereon to perpetuate the original location of this corner.

Resident witnesses:

None

CERTIFIED LAND CORNER RESTORATION  
U. S. PUBLIC LAND SURVEY MONUMENT RECORD

Index No. R-15

History of original corner establishment:  
The original Government survey was performed by Joseph H. Jenkins, Deputy Surveyor in October of 1862.

Wood post set:

Tamarack	10"	S12°W	69 links
Black Pine	8"	N72°E	33 links

Description of corner evidence found:

1-1/2" iron pipe 10 feet south of centerline of Prairie Rapids Road  
1-1/4" iron pipe S1°E 26.07 feet

Description of monument and accessories I established to perpetuate the original location of this corner.  
Corner in good condition  
Set nail in new bearing trees

Tamarack	7"	S55°E	79.00 feet
White Birch	10"	S19°W	92.10 feet
White Pine	26"	S79°W	117.40 feet

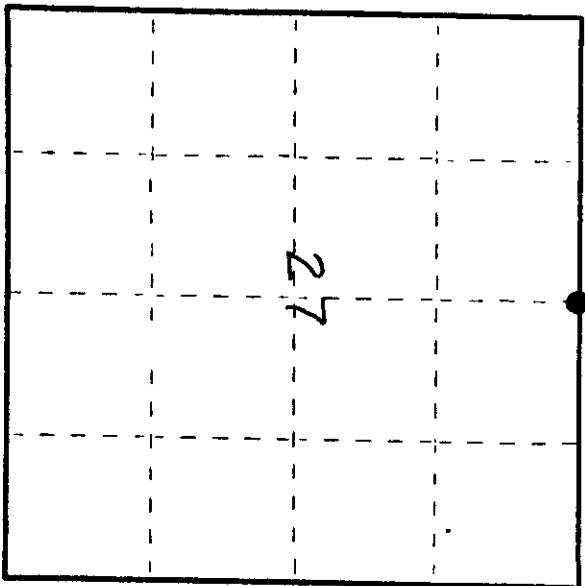
Dated at Minocqua, Wis., this 26th day of August, 1984.

Signature: *John H. Fisher* Title: Registered Land Surveyor Registration No. S-836  
(County Surveyor, Registered Land Surveyor, or other duly authorized official)

Office of Register of Deeds, County of Oneida  
Instrument was filed in this office for record on the 11th day of February, 1984 at 8:00 o'clock P.M.

Signature: *David Verag*  
(Register of Deeds)

By: *Joseph H. Jenkins* Deputy



● - Corner monument restored.

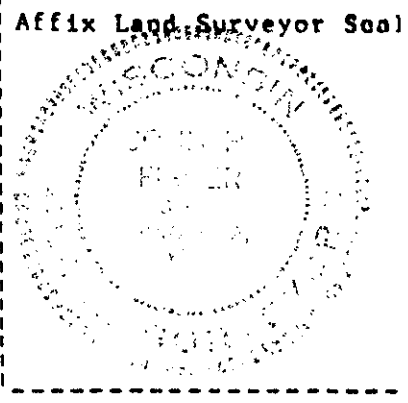
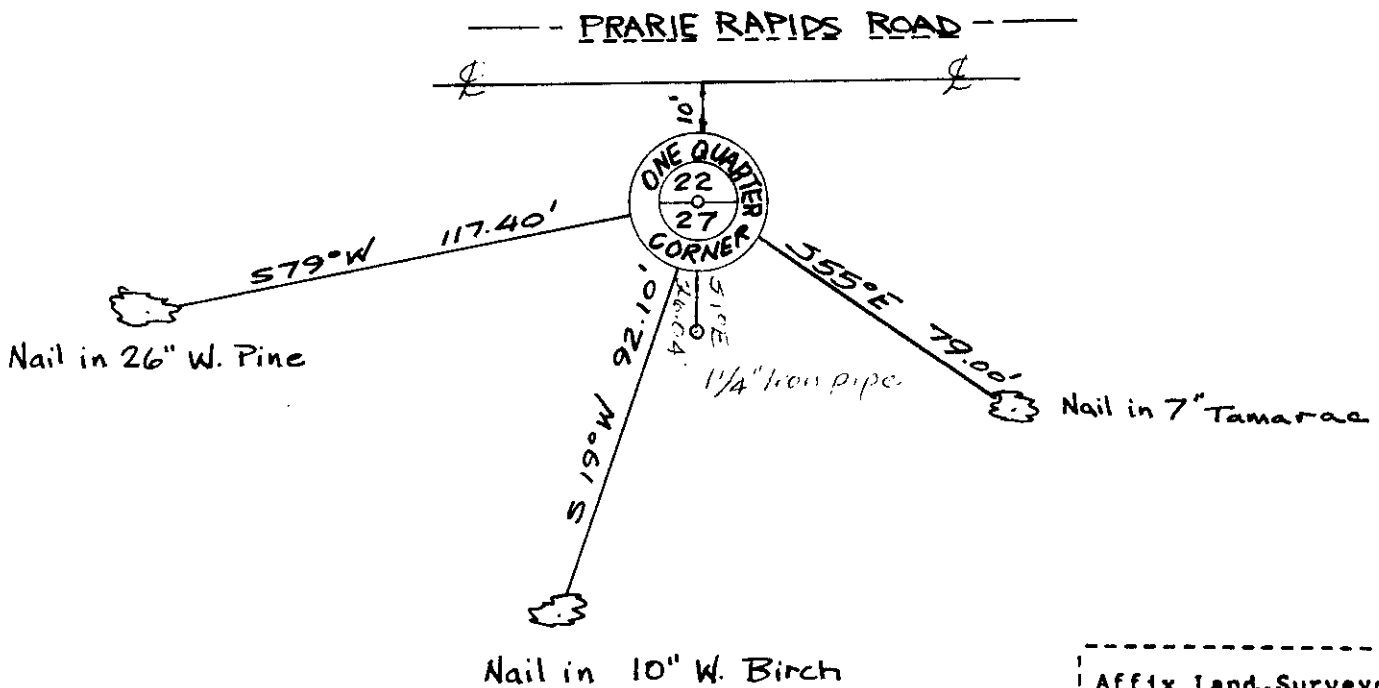
(c) Describe any material discrepancy between the location of the corner as restored or reestablished and the location of that corner as previously restored or reestablished by distance and direction. Show the discrepancy on the plan view drawing under (d), above. Show the distances between the corner as previously restored or reestablished and (1) the corner as restored or reestablished, and (2) to at least 2 of the witness monuments shown on the drawing in (d), above.

See sketch below

(f) Was the corner restored through acceptance of (1) an obliterated evidence location, or, (2) a found perpetuated location?

Found perpetuated location

(g&h) Was the corner reestablished through lost corner proportionate methods? If so, show the method, including the directions and distances to other public land survey corners used as evidence or used for proportioning in determining the corner location?



(1) John H. Fisher

(type or print name) certify that the corner location shown on this record was determined by me or under my direction and control and that this U.S. Public Land Survey Monument Record is correct and complete to the best of my knowledge and belief.

John H. Fisher  
Signature

8/30/84  
Date