

U.S. PUBLIC LAND SURVEY MONUMENT RECORD

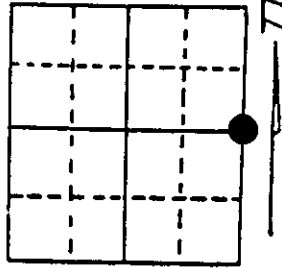
Note: This form is intended and designed to fulfill all requirements of Wisconsin Administrative Code, Chapter A-E 7.08 U.S. Public Land Survey Monument Record (3) (a) (b) (c) (d) (e) (f) (g) (h) (i). An additional sheet may be added if necessary to conform with said requirements.

(a) Corner location: Township 36 North

Range 6 East/West

Town/City/Village Nokomis

County Oneida



Section 22

(b) (f) (g) (h) Description of monument found at this corner and if it was accepted, state all evidence (material, testimonial, occupational, plats, records, other monuments) used as a basis for accepting. If not accepted or if nothing was found, state evidence used as basis for establishing location. If reestablished through lost corner proportionate methods, indicate all monuments, distances and directions used to establish. Indicate type of monument found or set and sign post.

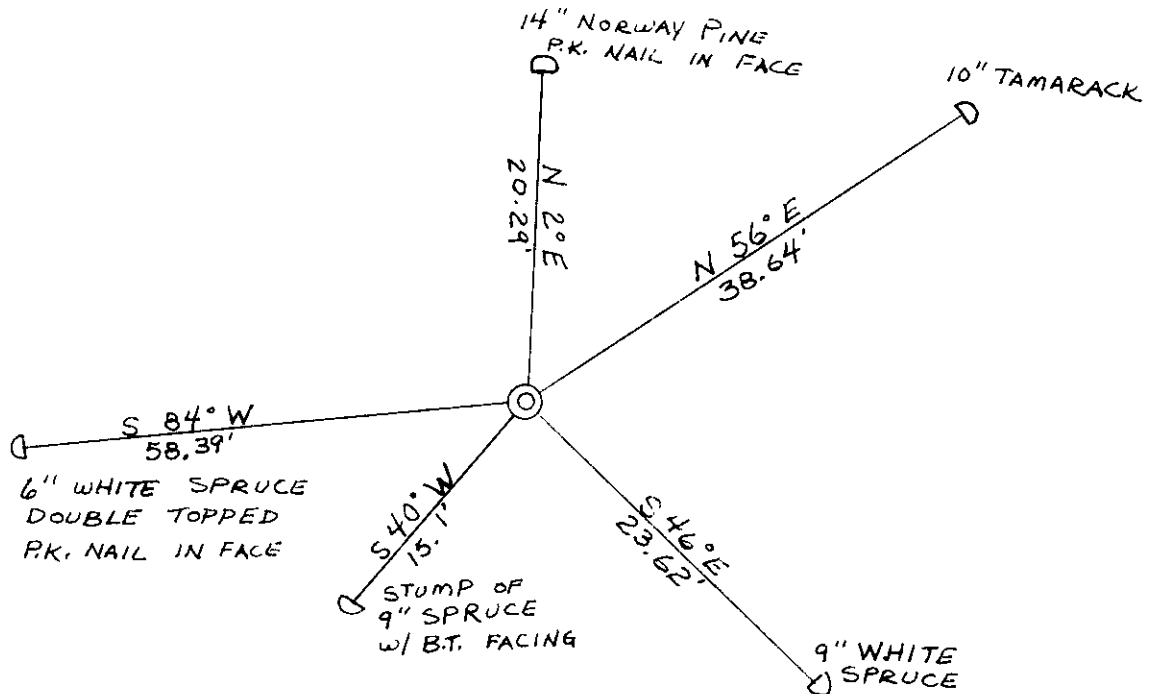
Oct. 1862, Orig. cor. estab. by Joseph H. Jenkins, North between 22 & 23..... 40.00 set 1/4 sec. post to Sections 22 & 23, B.T.s, Blk Pine 8 West 9 & Blk Pine 8 S 78° E 33.

Dec. 1903, D.H. Vaughan, at this corner found west original tree dead and stump of east tree, set post & made new bearings, B. Pine 10 S 56 1/2° W 72 links & B. Pine 8 S 5 E 74 1/2 links.

Oct. 1977, I found a 4" x 3/4" angle iron for the corner.

Oct. 1991, I replaced the angle iron with a 2" x 30" Oneida County Capped Monument for the corner and witnessed it as shown below.

(c) (d) (e) Plan view of corner with ties to at least 4 witness monuments. If in disagreement with previously established corner, show the distances between the two corners and also indicate the ties to the disputed corner.



(i) I, Lester J. Schmit R.L.S. 1192
 (type or print name) certify that the corner location on this record was determined by me or under my direction and control and that this U.S. Public Land Survey Monument Record is correct and complete to the best of my knowledge and belief.

Lester J. Schmit 16 Oct 91
 Signature Date



3606222000

Index No. P-17