

At _____ O'Clock _____ M

This form is intended to fulfill the requirements of Chapter Trans. 100.02, Wisconsin Public Land Survey Monument Location Record, Wisconsin Administrative Code. Use the reverse side of this form for continuation.

U.S. PUBLIC LAND SURVEY MONUMENT LOCATION RECORD

Recorders Data

USPLS CORNER: **NW** SECTION: **31** TOWNSHIP: **36 NORTH** RANGE: **07 EAST**

NAME OF WATERWAY FOR M.C. CORNER : **N/A** SECTION LINE: **N/A**

(CITY)(VILLAGE)(TOWN) OF: **WOODBORO** COUNTY OF: **ONEIDA**

Description of monument found or placed and all other evidence used as the basis for monument location; including monuments and measurements required if the corner location was reestablished by lost corner proportionate methods. Also indicate name of the original surveyor, original survey date and the corner monument, bearing trees, witness or other reference monuments established, including measured bearing and distance ties, from available survey records.

In August/September 1860, Alfred Millard/GLO set a wood post as the original corner in stream near West bank and noted OBTs: a 16" Pw N77°W 53 links , a 7" Tamarac S22°W 115 links and no other BTs near; all are now obliterated.

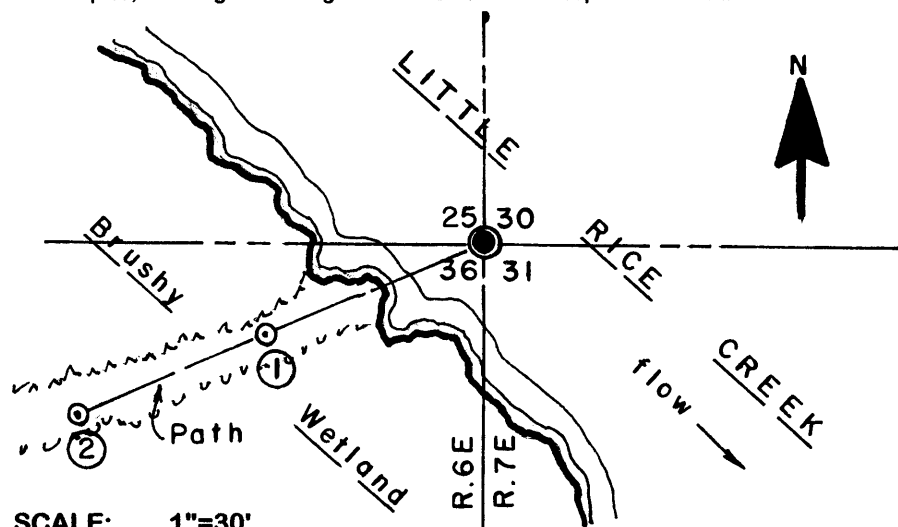
In June 1937, V.M. Maine found an iron pipe at this corner in 2' of water (Little Rice Creek) which he verified from original GLO 16" NW Pw BT lying down and original 7" Tamarack BT "where it stood" and reset the corner with a standard 2" dia. brass capped iron pipe and also noted no BTs near.

In May 1974, a 2.5" dia. iron pipe was found at this corner in "Little Rice River" with fences leading West and South by Wisconsin D.O.T. and that no references were available per location record by William H. Scherer/RLS 866 filed in Oneida County survey records. In November 2002, Aero-Metric, Inc. found a 2" iron pipe with brass cap stamped as this corner 6" East of a 1.5" iron pipe, next to an old collapsed dock into Little Rice Creek, per GPS data sheet filed in Oneida County survey records.

On October 5, 2006 I found an older 2" dia. brass capped iron pipe tipped 45°South at this corner which I replumbed and secured for new ties to 34" above creek water surface, as I could not pull nor reset the monument lower due to hard pan gravel creek bed, soil anchor rod and rooting at bottom; also found an old rusty 1.25" dia. iron pipe nearly flat nearby.

There were no direct witnesses. The corner monument will be subject to annual disturbance from creek ice and currents.

Plan view map of monument location with bearing and distance ties to a minimum of four(4) described witness or reference monuments of concrete, natural stone, iron, live bearing trees or equivalent material. If applicable, also show a minimum of two(2) bearing and distance ties to any other monument found and not accepted; including the bearing and distance from the accepted monument.



WITNESS MONUMENT TIES:

NOTE:
Due to the wetland conditions along the creek bank West of the corner and the lack of any suitable BTs nearby, I could only reference the corner to the two(2) witness monuments below:

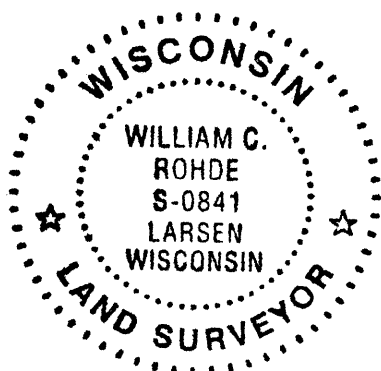
- ① 5/8" dia. x 24" long rebar set with yellow poly Reference Mark cap flush S66°W 36.75'.
- ② Same set flush S66°W 68.75'.

Standard white poly 'T' marker post set S65°W 17' on the West (right) bank of creek.

SCALE: 1"=30'

Unless otherwise indicated, all bearing tree ties are to a .25" dia. by 2.5" long PK nail with a 1.25" dia. steel washer driven into unblazed right face and a .25" dia. by 2.5" long PK nail with a 2" dia. steel washer stamped BT is also driven into unblazed face of bearing tree at DBH; the basis for measured bearings is by compass to nearest degree and all tie distances are measured horizontal by steel tape corrected to nearest 1/100th feet at standard temperature of 68° F.

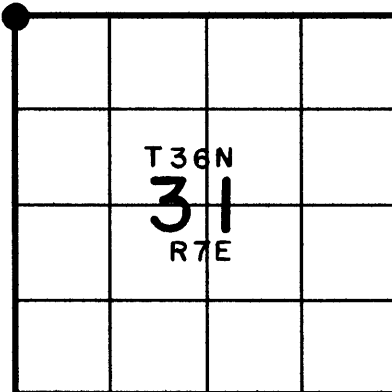
RLS SEAL:



LAND SURVEYOR CERTIFICATE:

I, William C. Rohde, hereby certify that I am duly licensed as a Professional Land Surveyor in the State of Wisconsin; that this USPLS monument location was determined by me and/or under my direct supervision and control; and that this U.S. Public Land Survey Monument Location Record is true and correct to the best of my knowledge and belief.

Signed: *William C. Rohde*
William C. Rohde RLS 841



SECTION LOCATION MAP

INDEX NO. **V 1**
3606250000

U.S. PUBLIC LAND SURVEY MONUMENT RECORD

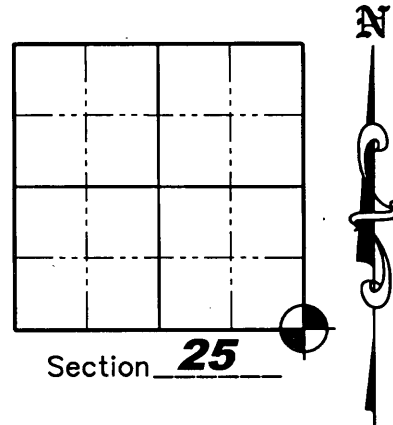
NOTE: This form is intended and designed to fulfill all requirements of Wisconsin Administrative Code, Chapter A-E 7 .08 U.S. Public Land Survey Monument Record (3)(a)(b)(c)(d)(e)(f)(g)(h)(i). An additional sheet may be added if necessary to conform with said requirements.

(a) Corner location: Township 36 North

Range 6 East

Town of Nokomis

County of Oneida



(b)(f)(g)(h) Description of monument found at this corner and if it was accepted, state all evidence (material, testimonial, occupation, plats, records, other monuments) used as a basis for accepting. If not accepted or if nothing was found, state evidence used as a basis for establishing location. If reestablished through lost corner proportionate methods, indicate all monuments, distances and directions used to establish. Indicate type of monument found or set and sign post.

August/September 1860 – Alfred Millard set original Section post –
Bearing trees: White Pine 16" N77°W, 53 lks., Tamarack 12" S22°W, 115 lks.

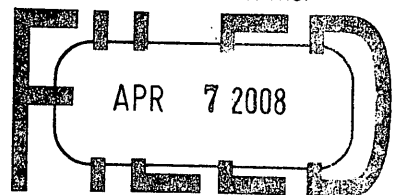
June 29, 1937 – Maine ran West from 1/8 stake on South line of Section 25 and fell 0.16 chains South of Original Government Corner. Iron pipe in 2 feet of water. Original bearing tree lying down – White Pine 16" N77°W 53 lks., Tamarack 7" S22°W 115 lks. – found where it stood.

March 20, 2008 – Jonathan W. Dulin found and accepted a stamped 2" iron pipe with brass cap, 2-1/2' tall on the edge of the Little Rice Creek. We also found a white T post lying 21' Southwesterly from the corner. We set new witness corners as shown on sheet 2 hereof.

(c)(d)(e) Plan view of corner with ties to at least 4 witness monuments. If in disagreement with previously established corner, show the distances between the two corners and also indicate the ties to the disputed corner.

See sheet 2 hereof

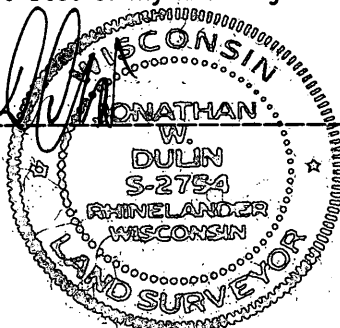
REGISTER OF DEEDS OFFICE
ONEIDA COUNTY, WIS.



At _____ O'Clock _____ M
THOMAS H. LEIGHTON
REGISTER OF DEEDS

(i) I, Jonathan W. Dulin, certify that the corner location on this record was determined by me under my direction and control and that this U.S. Public Land Survey Monument is correct and complete to the best of my knowledge and belief.

Signature *Jonathan W. Dulin* Date 3/24/08



Sheet 1 of 2

3606250000




Index No. V-25

U.S. PUBLIC LAND SURVEY MONUMENT RECORD



Scale: 1" = 50'

Legend

-  Set 3/4" by 24" Iron Rebar Weighing 1.50 lbs/lin ft.
-  Found 2" Iron Pipe W/Brass Cap Set by Maine in 1937
-  Apparent Wetland

Note

The found 2" iron pipe with brass cap lies on the edge of the Little Rice Creek and stands 2-1/2' tall.

