

This form is intended to fulfill the requirements of Chapter A-E 7.08 (3)(a) thru (i) U.S. Public Land Survey Monument Location Record, Wisconsin Administrative Code. Use the reverse side of form for continuation.

U.S. PUBLIC LAND SURVEY MONUMENT LOCATION

Recorders Data

USPLS CORNER: NORTH 1/4 SECTION: 36 TOWNSHIP: 36 NORTH RANGE: 06 EAST

NAME OF WATERWAY FOR M.C. CORNER : N/A SECTION LINE: N/A

~~(CITY/VILLAGE)~~(TOWN) OF: NOKOMIS COUNTY OF: ONEIDA

Description of monument found or placed and all other evidence used as the basis for monument location; including monuments and related measurements required if the corner location was reestablished by lost corner proportionate methods. Also indicate name of original surveyor, original survey date and the corner monument, bearing trees, witness or other reference monuments established; including measured bearing and distance ties, from available records.

Found and accepted Maine's 2" dia. iron pipe with brass cap stamped in 1936 about 28" above grade with an older 1" dia. iron pipe along east side with uncapped top 16" above grade. Both iron pipes painted with blue tree paint and are about 6" West of an old steel 'T' fence post with wire fence leading East and South. Maine's pipe is tipped about 2" SW at the top from plumb but very secure and stable for new ties. I pulled and used the old 1" iron pipe for new SE witness.

In October 1862, Joseph J. Jenkins/GLO set a wood post as the original corner and marked OBTs: A 6" Pj N40°E 05 links and a 6" Pj S67°W 14 links, all of which are now obliterated beyond recovery purposes.

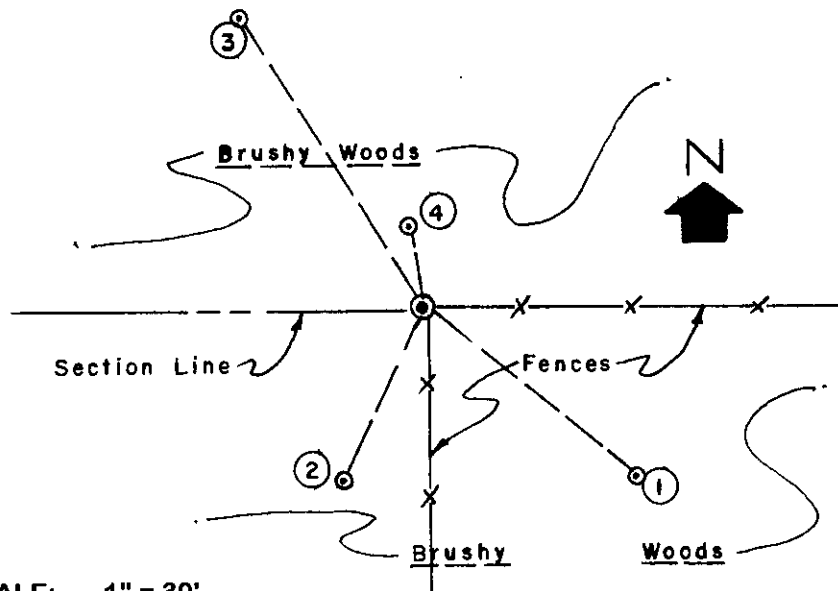
In October 1936, Maine found Halls 1931 iron pipe at the corner and Halls "blue boulders with crosses on them", per Plat of Survey filed as C-2452 in Oneida County records, also found this date. Maine replaced Halls pipe with standard brass capped 2" iron pipe noted above.

In November 1978, Wisconsin DOT notes a 2.5" dia.(OD) iron pipe with brass cap at this corner per right-of-way plat for State Highway Project No. 1173-4-21.

In September 1984, Paul T. Carroll/RLS 770 notes a 2" iron pipe found at this corner per his section control diagram of the north line of Section 36 filed as L-262 in Oneida County records.

This recovery completed June 27, 2000; my entry upon his land for recovery witnessed by local owner Carl Westbrook.

Plan view map of monument location with bearing and distance ties to a minimum of four(4) described witness or reference monuments of concrete, natural stone, iron, live bearing trees or equivalent material. If applicable, also show a minimum of two(2) bearing and distance ties to any other monument found and not accepted; including the bearing and distance from the accepted monument.



WITNESS MONUMENT TIES:

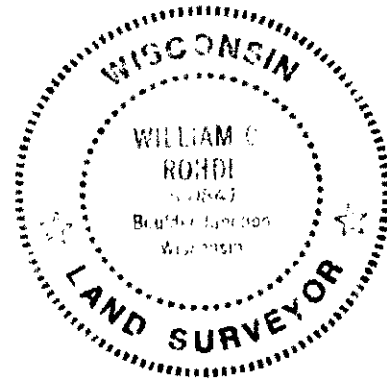
- ① Set Hall's old 1" dia. by 36" long iron pipe in a cairn of rocks S52°E at 42.96'.
- ② New BT 12" Oak NW trunk of double S24°W 29.83'.
- ③ New BT 11" Oak NE trunk of double N32°W 54.01'.
- ④ New BT 15" Oak N10°W 13.23'.

Standard white poly 'T' marker post set along East side of 2" dia. iron pipe brass capped corner monument.

SCALE: 1" = 30'

Unless otherwise indicated, all bearing tree ties are to a .25" dia. by 2.5" long PK nail with a 1.25" dia. steel washer driven into unblazed right face and a .25" dia. by 2.5" long PK nail with a 2" dia. steel washer stamped BT is also driven into unblazed face of bearing tree at DBH; the basis for measured bearings is by compass to nearest degree and all tie distances are measured horizontal by steel tape corrected to nearest 1/100th feet at standard temperature of 68° F.

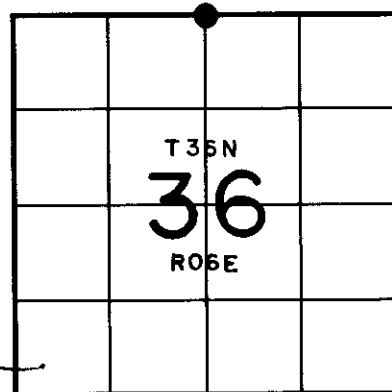
RLS SEAL:



LAND SURVEYOR CERTIFICATE:

I, William C. Rohde, hereby certify that I am duly licensed as a Professional Land Surveyor in the State of Wisconsin; that this USPLS monument location was determined by me and/or under my direct supervision and control; and that this U.S. Public Land Survey Monument Location Record is true and correct to the best of my knowledge and belief.

Signed: William C. Rohde
William C. Rohde RLS 841



SECTION LOCATION MAP

INDEX NO. 3606250020

V-23