

U.S. PUBLIC LAND SURVEY MONUMENT RECORD

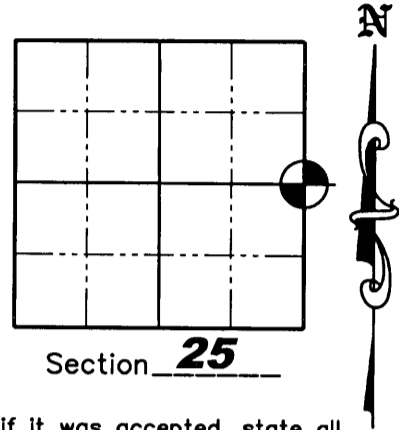
NOTE: This form is intended and designed to fulfill all requirements of Wisconsin Administrative Code, Chapter A-E 7 .08 U.S. Public Land Survey Monument Record (3)(a)(b)(c)(d)(e)(f)(g)(h)(i). An additional sheet may be added if necessary to conform with said requirements.

(a) Corner location: Township 36 North

Range 6 East

Town of Nokomis

County of Oneida



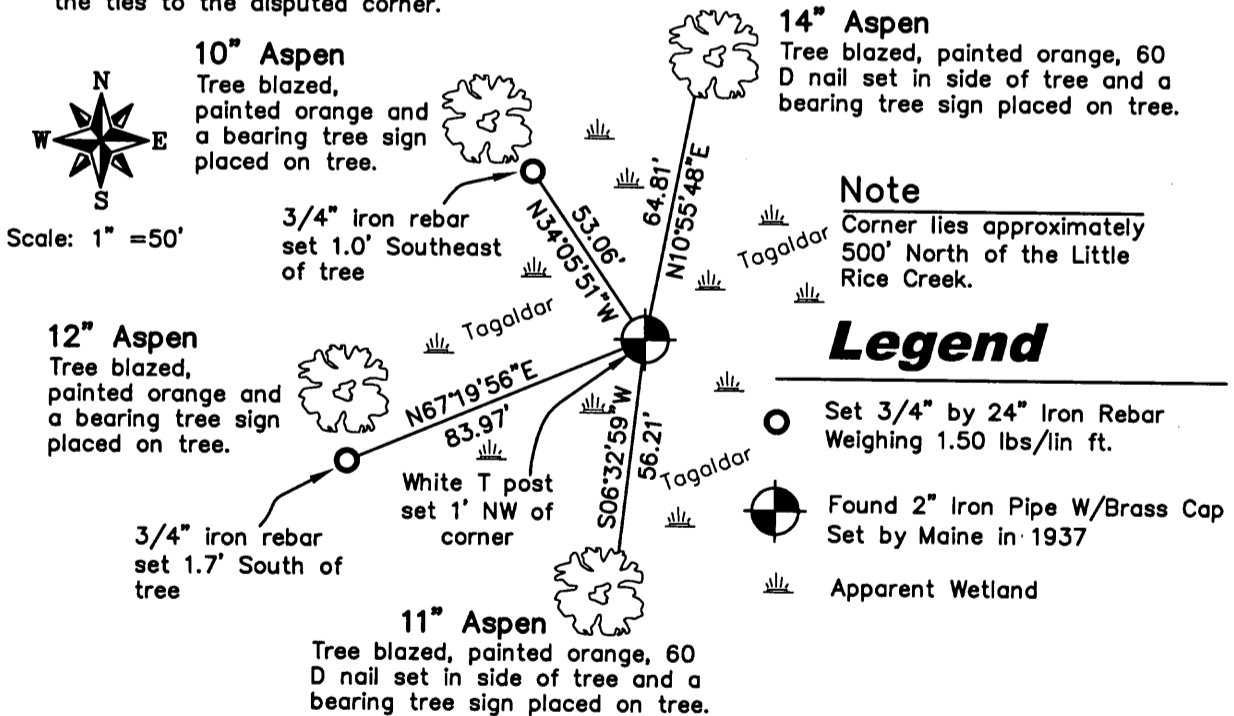
(b)(f)(g)(h) Description of monument found at this corner and if it was accepted, state all evidence (material, testimonial, occupation, plats, records, other monuments) used as a basis for accepting. If not accepted or if nothing was found, state evidence used as a basis for establishing location. If reestablished through lost corner proportionate methods, indicate all monuments, distances and directions used to establish. Indicate type of monument found or set and sign post.

August/September 1860 - Alfred Millard set original quarter Section post - Bearing trees: Aspen 16" N32°W, 12 lks., Aspen 12" N50°E, 12 lks.

September 25, 1937 - Maine set Official Corner at 40.10 chains North of the Southeast Section corner - Bearing trees: Tamarack 9" N62°E, 0.993 Ch's (65.54'); Aspen 7" N70°W, 0.287 Ch's (18.94').

March 20, 2008 - Jonathan W. Dulin found and accepted a stamped 2" iron pipe with brass cap, 2-1/2' tall set by Maine in 1937. (Maine's bearing trees were gone) We set four new witness corners as shown below.

(c)(d)(e) Plan view of corner with ties to at least 4 witness monuments. If in disagreement with previously established corner, show the distances between the two corners and also indicate the ties to the disputed corner.



(i) I, Jonathan W. Dulin, certify that the corner location on this record was determined by me under my direction and control and that this U.S. Public Land Survey Monument is correct and complete to the best of my knowledge and belief.

Signature [Handwritten Signature] Date 3/24/08

WISCONSIN
 JONATHAN W. DULIN
 S-2754
 RHINELANDER
 WISCONSIN
 LAND SURVEYOR

REGISTER OF DEEDS OFFICE
 ONEIDA COUNTY, WIS.

FILED
 APR 7 2008

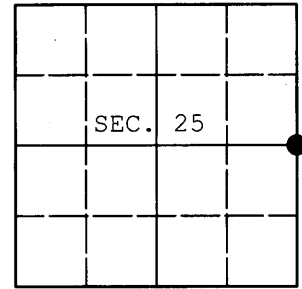
At _____ O'Clock _____ M
 THOMAS H. LEIGHTON
 REGISTER 3606252000

Index No. T-25

U.S. PUBLIC LAND SURVEY MONUMENT RECORD

Note: This form is intended and designed to fulfill all requirements of Wisconsin Administrative Code, Chapter A-E 7.08 U.S. Public Land Survey Monument Record (3) (a) (b) (c) (d) (e) (f) (g) (h) (i). An additional sheet may be added if necessary to conform with said requirements.

(a) CORNER LOCATION: WISCRS (Oneida County)
1/4 Cor. of Secs. 25 & 30 N: 142,739.759 USft
Township 36 North E: 197,236.004 USft
Range 6 & 7 East of the 4th P.M. Datum: NAD 1983(2011)
Town of Nokomis & Woodboro County of Oneida



(b) HISTORY OF ORIGINAL CORNER ESTABLISHMENT.

Original Surveyor: Original Accessories:
Date of Survey:

(b) (f) (g) (h) Description of monument found at this corner and if it was accepted, state all evidence (material, testimonial, occupational, plats, records, other monuments) used as a basis for accepting. If not accepted or if nothing was found, state evidence used as basis for establishing location. If re-established through lost corner proportionate methods, indicate all monuments, distances and directions used to establish. Indicate type of monument and sign post found or set.

NOTE: This is a perpetuation of a previous USPLS Monument Record by Jonathan W. Dulin, RLS dated March 24, 2008 and filed in the office of the Oneida County Register of Deeds. A complete history of the corner can be found on the previous monument record. I accept the previous location as a true and faithful perpetuation or reestablishment of the original corner location and further perpetuate it as follows.

November 18, 2013: I found and accepted Dulin's monument, a 2-1/2" diam. iron pipe with 2-1/2" diam. brass cap projecting 30" above the ground surface. Dulin's accessories were found in substantial agreement with his previous record and were not remeasured as the sole purpose of this work is to report the coordinates of the corner point.

The coordinates shown were derived from a direct RTN GPS observation referenced to the WISCORS network.

(c) (d) (e) Plan view of corner with ties to at least 4 witness monuments. If in disagreement with previously established corner, show the distances between the two corners and also indicate the ties to the disputed.


REGISTER OF DEEDS OFFICE
ONEIDA COUNTY
FILED

DEC 23 2013

AT _____ O'CLOCK _____ M
KYLE J. FRANSON
REGISTER OF DEEDS

(i) I, Jeffrey W. Austin, Registered Land Surveyor No. S-1885, hereby certify that the corner location on this record was determined by me or under my direction and control and that this U.S. Public Land Survey Monument Record is correct and complete to the best of my knowledge and belief.



Signature 

DEC. 9, 2013
Date