

# U.S. PUBLIC LAND SURVEY MONUMENT RECORD

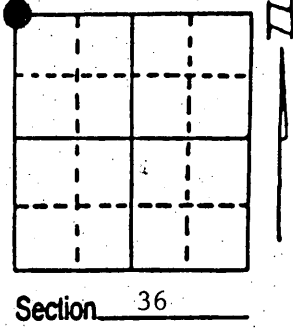
**Note:** This form is intended and designed to fulfill all requirements of Wisconsin Administrative Code, Chapter A-E 7.08 U.S. Public Land Survey Monument Record (3) (a) (b) (c) (d) (e) (f) (g) (h) (i). An additional sheet may be added if necessary to conform with said requirements.

(a) Corner location: Township 36 North

Range 6 East/West

Town/City/Village Nokomis

County Oneida

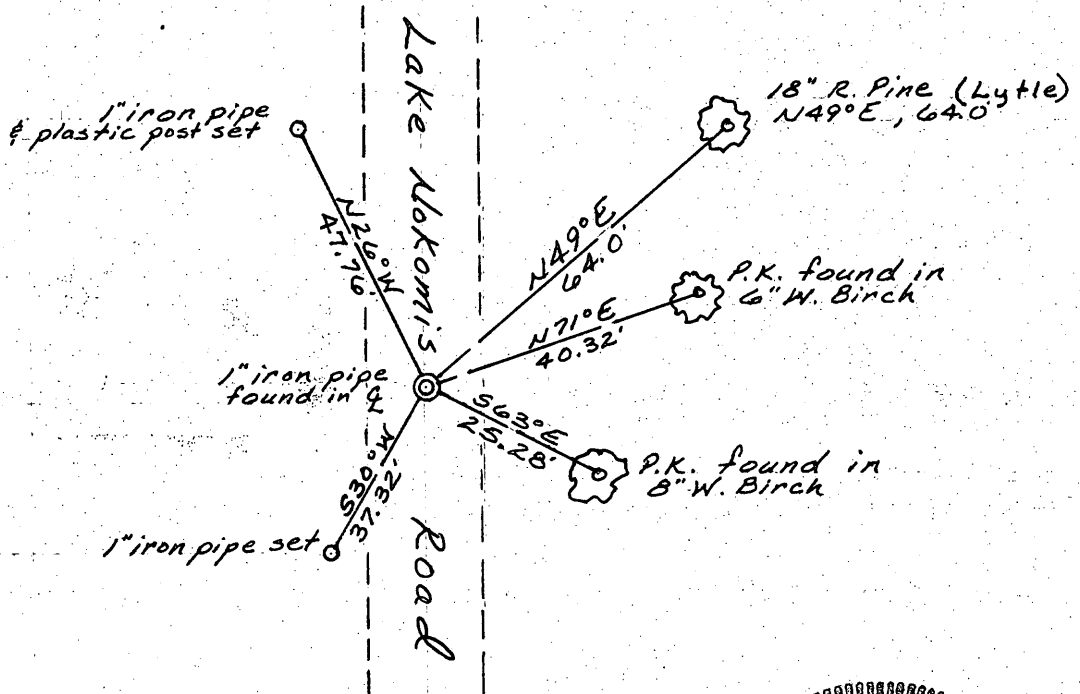


Section 36

(b) (f) (g) (h) Description of monument found at this corner and if it was accepted, state all evidence (material, testimonial, occupational, plats, records, other monuments) used as a basis for accepting. If not accepted or if nothing was found, state evidence used as basis for establishing location. If reestablished through lost corner proportionate methods, indicate all monuments, distances and directions used to establish. Indicate type of monument found or set and sign post.

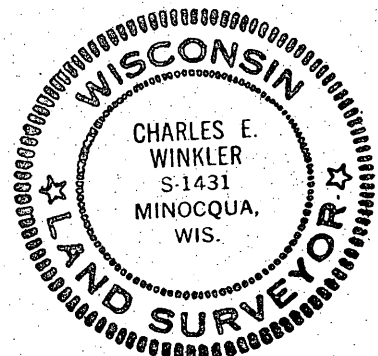
- October, 1862 - J. H. Jenkins, Duputy Surveyor, set post for corner location. Bearing trees: 12" Bl. Pine, N74°E, 37 lks; 10" Bl. Pine, S82°E, 16 lks; 10" Bl. Pine, S32°W, 31 lks; 8" Bl. Pine, N43°W, 16 lks.
- 1931 - H. C. Hall set a 1" iron pipe in road based on a previous bearing tree by Lytle, this location checked with a stump N-E 37 lks (orig.) BT's: Y. Pine stp. 14" S42°E, .596 chs; Y. Pine (Lytle's) N47°10''E, .97 chs. (64.0').
- 1965 - Northwoods Surveyors set a 1" iron pipe to mark the location of the corner by crossing-in 40 lks west from a 1938 WCD post and 64.0' from Lytle's Y. Pine. BT's: 18" N. Pine, N46°E, 64.0'; 12" Oak, S59°E, 70.0'.
- 1994 - I found and accepted a 1" iron pipe in the centerline down 4".

(c) (d) (e) Plan view of corner with ties to at least 4 witness monuments. If in disagreement with previously established corner, show the distances between the two corners and also indicate the ties to the disputed corner.



(i) I, Charles E. Winkler S1431  
 (type or print name) certify that the corner location on this record was determined by me or under my direction and control and that this U.S. Public Land Survey Monument Record is correct and complete to the best of my knowledge and belief.

Charles E. Winkler 8/23/1994  
 Signature Foltz & Associates, Inc. Date



Index No. V-21

Stamp 3606260000

~~3606270000~~

# U.S. PUBLIC LAND SURVEY MONUMENT RECORD

NOTE: This form is intended and designed to fulfill all requirements of Wisconsin Administrative Code, Chapter A-E 7.08 U.S. Public Land Survey Monument Record (3)(a)(b)(c)(d)(e)(f)(g)(h)(i). An additional sheet may be added if necessary to conform with said requirements.

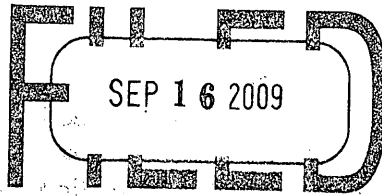
(a) Corner location: Township 36 North

Range 6 East

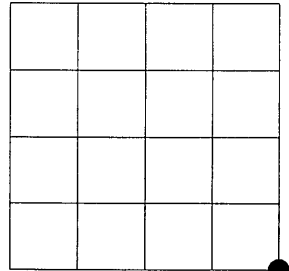
Town of Nokomis

Oneida County, Wisconsin

REGISTER OF DEEDS OFFICE  
ONEIDA COUNTY, WIS.



At \_\_\_\_\_ O'Clock \_\_\_\_\_ M  
THOMAS H. LEIGHTON  
REGISTER OF DEEDS

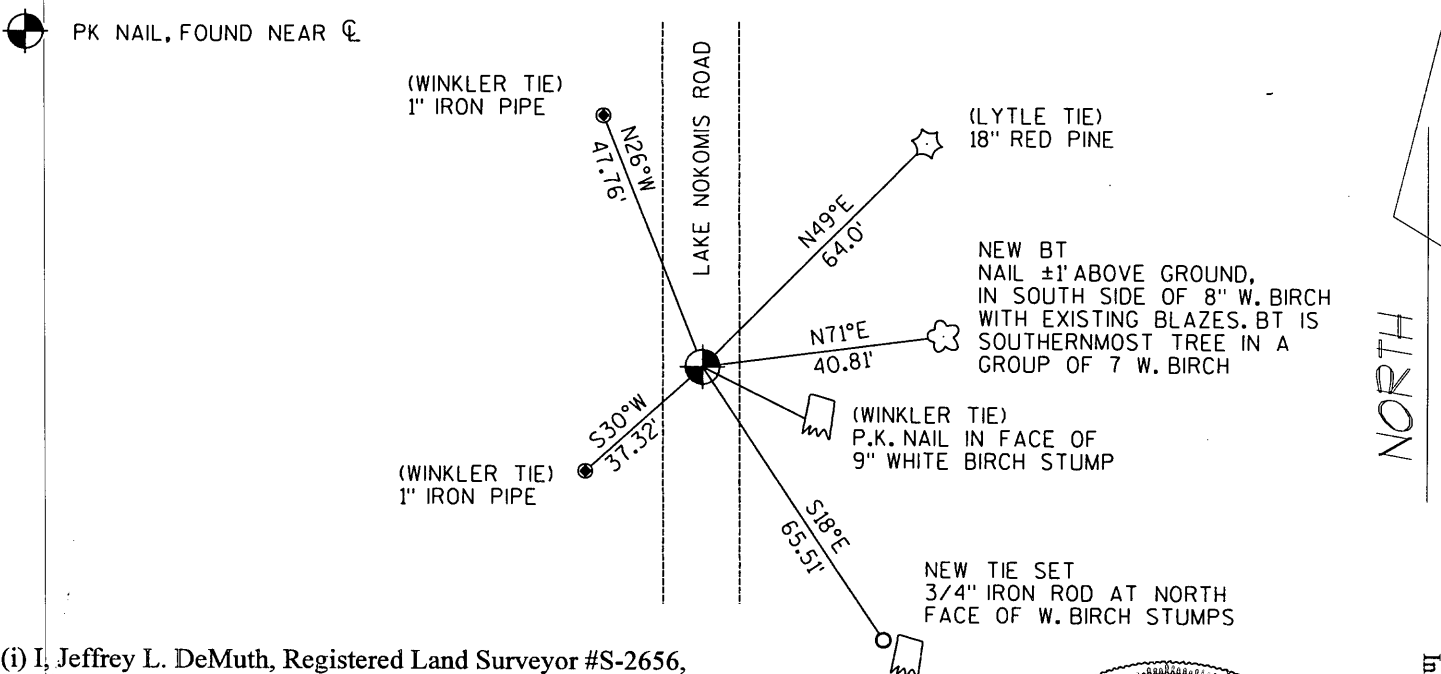


Section 26

(b)(f)(g)(h) Description of monument found at this corner and if it was accepted, state all evidence (material, testimonial, occupational, plats, records, other monuments) used as a basis for accepting. If not accepted or if nothing was found, state evidence used as basis for establishing location. If reestablished through lost corner proportionate methods, indicate all monuments, distances and directions used to establish. Indicate type of monument found or set and sign post.

- 1862 - J.H. Jenkins, Deputy Surveyor, set post for corner location.  
BT's : 12" Bl. Pine N74°E 37lks, 10" Bl. Pine S82°E 16lks, 10" Bl. Pine S32°W 31lks, 8" Bl. Pine N43°W 16lks
- 1931 - H.C. Hall set a 1" iron pipe in road based on a previous bearing tree by Lytle, this location checked with a stump NE 37lks (orig.). BT's: Y. Pine stp.14" S42°E .596chs, Y. Pine (Lytle's) N47°10"E .97chs (64.0')
- 1937 - Maine Book 1, refers to "Iron Pipe in road" Org B.T. stp nearly gone, Blk Pine 12 N.74E., 37 found Lytle's B.T. Y.P. 14 N47E .97, Halls B.T. Y.P. 14, S42E., 59.6, Marked B.T. Blk Oak 5 N.42W., 591/2
- 1965 - Northwoods Surveyors set a 1" iron pipe to mark the location of the corner by crossing-in 40lks west from a 1938 WCD post and 64.0' from Lytle's Y. Pine. BT's: 18" N. Pine N46°E 64.0', 12" Oak S59°E 70.0'
- 1978 - Lester J. Schmidt, Sets a 2" Dia. Iron Pipe on Plat of Lakeview Estates.
- 1994 - Charles Winkler found and accepted a 1" iron pipe in the centerline down 4".
- 1998 - Aero Metric Inc. take GPS observation on a PK Nail, establishing Oneida County Coordinates at corner position
- 2000 - Thomas Radenz shows this corner as "recreated from ties" on CSM #002405. No reference as to the characteristics of this monument
- 2005 - Eugene C. Uttech Sets Parker-Kalon nail from ties.
- 2008 - I found and excepted, Uttechs Parker-Kalon nail. I also found a magnetic attraction ±2' east of PK. this location appears to be set erroneously from 1978 Plat of Lakeview Estates.

(c)(d)(e) Plan view of corner with ties to at least 4 witness monuments. If in disagreement with previously established corner, show the distances between the two corners and also indicate the ties to the disputed corner.

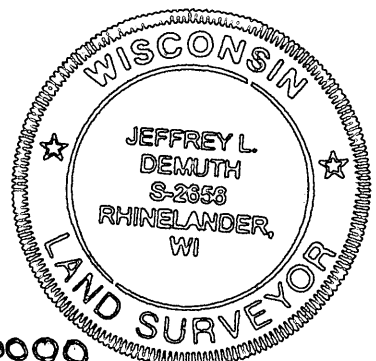


(i) I, Jeffrey L. DeMuth, Registered Land Surveyor #S-2656, hereby certify that the corner location on this record was determined by me or under my direction and control and that this U.S. Public Land Survey Monument Record is correct and complete to the best of my knowledge and belief.

Signature

*Jeffrey L. DeMuth*

10/17/2008  
Date



3606260000

Index No. V 21