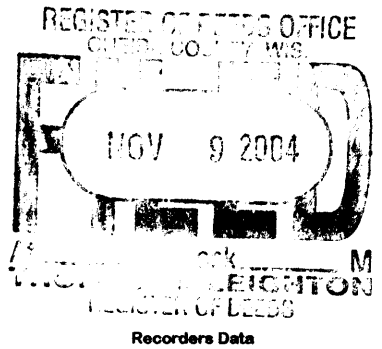


This form is intended to fulfill the requirements of Chapter A-E7.08 (3)(a) thru (i) U.S. Public Land Survey Monument Location Record, Wisconsin Administrative Code. Use the reverse side of form for continuation.



U.S. PUBLIC LAND SURVEY MONUMENT LOCATION RECORD

USPLS CORNER: EAST WITNESS MC SECTION: 35 TOWNSHIP: 36 NORTH RANGE: 6 EAST
 NAME OF WATERWAY FOR M.C. CORNER: LAKE NOKOMIS SECTION LINE: NORTH
 (CITY)(VILLAGE)(TOWN) OF: NOKOMIS COUNTY OF: ONEIDA

Description of monument found or placed and all other evidence used as the basis for monument location; including monuments and measurements required if the corner location was reestablished by lost corner proportionate methods. Also indicate name of the original surveyor, original survey date and the corner monument, bearing trees, witness or other reference monuments established, including measured bearing and distance ties, from available survey records.

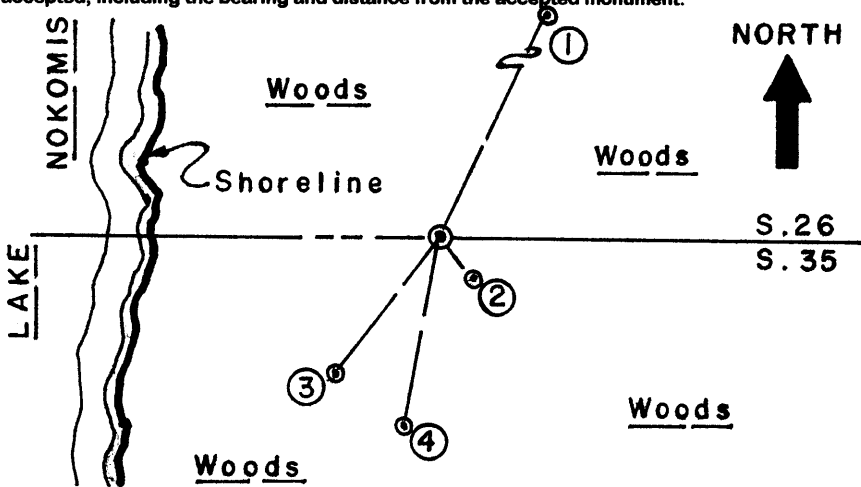
Found an old undisturbed 2" dia. record iron pipe with uncapped top flush at this corner location per Plat of Lakeview Estates and Certified Survey Map No. 1245 filed in Oneida County records. I carefully removed the 28" long green painted old iron pipe and drove a standard 2" dia. by 30" long aluminum pipe monument with stamped Oneida County cap 6" up into the plumb soil cavity left by the old iron pipe below grade. I had also found a 1/2" dia. by 79" long galvanized conduit marker in the old 2" iron pipe, which I left flat on grade nearby with the old 2" iron pipe and I reset an old 2x2 wood stake painted white with red top and # 4 stenciled on North side between new monument and T post.

Corner falls about 30' West of existing vegetated/rocky lake shoreline bearing North/South and is about 150' North of lakeside cottage at #9535 Spillman Lane.

In October 1862, Joseph H. Jenkins/GLO did not set a wood post as an MC nor mark OBTs, as Lake Nokomis was not yet impounded by damming afterwards.

This recovery completed 09/11/04; there were no direct witnesses.

Plan view map of monument location with bearing and distance ties to a minimum of four(4) described witness or reference monuments of concrete, natural stone, iron, live bearing trees or equivalent material. If applicable, also show a minimum of two(2) bearing and distance ties to any other monument found and not accepted; including the bearing and distance from the accepted monument.



WITNESS MONUMENT TIES:

- ① New 9" Or BT N25°E 29.65'.
- ② New 24" basal trunk of a triple 10" to 12" Mr BT S40°E 5.41'.
- ③ New 4.5" Or BT S10°W 19.40'.
- ④ New 5.5" Bw BT S37°W 17.27'.

Standard white poly "T" marker post set 4" North of corner monument.

I flagged monument, T post and new BTs with blaze orange tape.

SCALE: 1" = 20'

Unless otherwise indicated, all bearing tree ties are to a .25" dia. by 2.5" long PK nail with a 1.25" dia. steel washer driven into unblazed right face and a .25" dia. by 2.5" long PK nail with a 2" dia. steel washer stamped BT is also driven into unblazed face of bearing tree at DBH; the basis for measured bearings is by compass to nearest degree and all tie distances are measured horizontal by steel tape corrected to nearest 1/100th feet at standard temperature of 68° F.

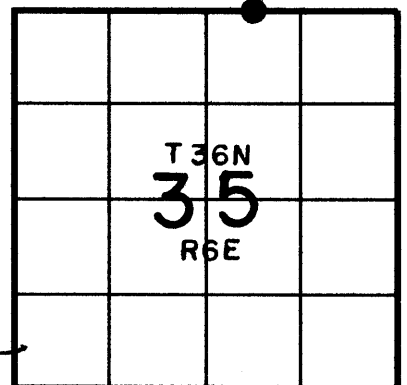
RLS SEAL:



LAND SURVEYOR CERTIFICATE:

I, William C. Rohde, hereby certify that I am duly licensed as a Professional Land Surveyor in the State of Wisconsin; that this USPLS monument location was determined by me and/or under my direct supervision and control; and that this U.S. Public Land Survey Monument Location Record is true and correct to the best of my knowledge and belief.

Signed William C. Rohde
 William C. Rohde RLS 841



SECTION LOCATION MAP
 INDEX NO. V 19-20
3606260014