

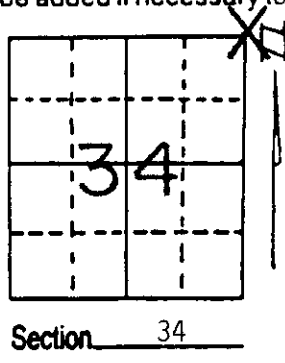
# U.S. PUBLIC LAND SURVEY MONUMENT RECORD

**Note:** This form is intended and designed to fulfill all requirements of Wisconsin Administrative Code, Chapter A-E 7.08 U.S. Public Land Survey Monument Record (3) (a) (b) (c) (d) (e) (f) (g) (h) (i). An additional sheet may be added if necessary to conform with said requirements.

(a) Corner location: Township 36 North  
 Range 6E East/West

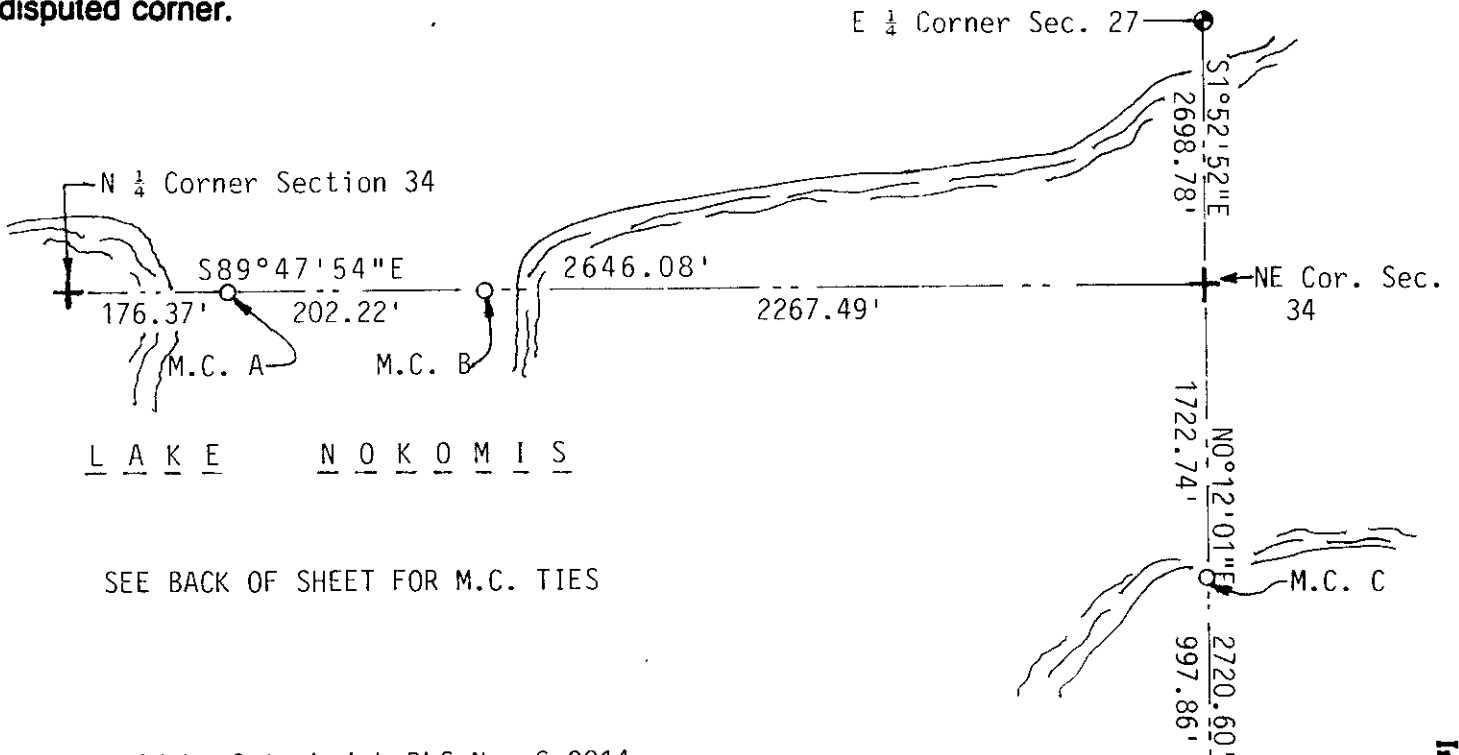
Town/City/Village Nokomis

County Oneida



(b) (f) (g) (h) Description of monument found at this corner and if it was accepted, state all evidence (material, testimonial, occupational, plats, records, other monuments) used as a basis for accepting. If not accepted or if nothing was found, state evidence used as basis for establishing location. If reestablished through lost corner proportionate methods, indicate all monuments, distances and directions used to establish. Indicate type of monument found or set and sign post.  
 Corner falls in Lake Nokomis. Set Meander Corners. See back for more information

(c) (d) (e) Plan view of corner with ties to at least 4 witness monuments. If in disagreement with previously established corner, show the distances between the two corners and also indicate the ties to the disputed corner.



SEE BACK OF SHEET FOR M.C. TIES

(i) I, David L. Osterbrink RLS No. S-2014  
 (type or print name) certify that the corner location on this record was determined by me or under my direction and control and that this U.S. Public Land Survey Monument Record is correct and complete to the best of my knowledge and belief.

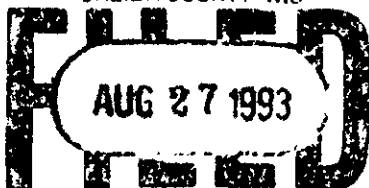
David L. Osterbrink 8-25-93  
 Signature Date



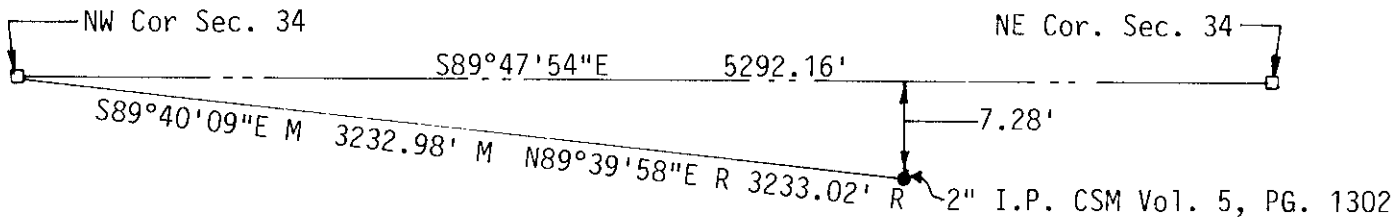
Stamp 3606270000

Index No. V-17

REGISTER OF DEEDS OFFICE  
ONEIDA COUNTY WIS



At \_\_\_\_\_ O'Clock \_\_\_\_\_ M  
**THOMAS H. LEIGHTON**  
REGISTER OF DEEDS

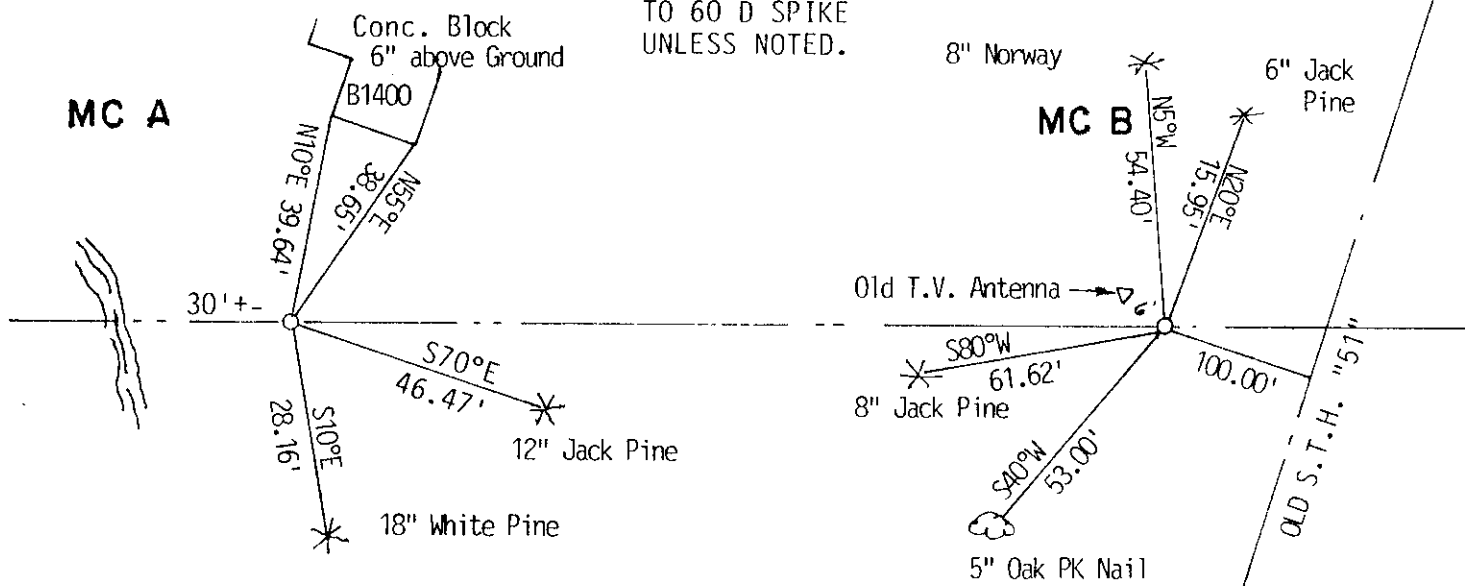


The North  $\frac{1}{4}$  corner and Northeast corner of Section 34, T36N, R6E were originally set and witnessed by Joseph H. Jenkins, circa 1862. Lake Nokomis now covers these corners. In 1948, F.R. Wincentzen, then Deputy County Surveyor, set various interior 40 corners, and meander corners in Section 34. I tied into several of his points, and after finding no other evidence, such as old fence lines, various "stakes" set on Section Line, I decided to hold his work, and consider the North  $\frac{1}{4}$  corner, and Northeast Corner as obliterated corners. Starting at the East  $\frac{1}{4}$  corner, I held his meander corner set on the shore of Lake Nokomis for line. I held his record distance to the NE corner of the SE  $\frac{1}{4}$  of the NE  $\frac{1}{4}$  and went that distance again to set the Northeast Corner of Section 34. I then Straight lined to the Northwest corner of Section 34 and split the distance for the North  $\frac{1}{4}$  corner. On paper, I held an existing 2" brass capped monument at the NW corner of the SE  $\frac{1}{4}$  of the NE  $\frac{1}{4}$ , went his record distance, on the measured bearing, to the NW corner of the SW  $\frac{1}{4}$  of the NE  $\frac{1}{4}$  (falls in road, no iron found) went his record angle North, on record distance, and checked straight line distance within 0.3'. Held straight line distance for North  $\frac{1}{4}$  corner. Tied into 2 other 1" iron pipe that agreed with his called for distances / bearings.

Tied into 2" Iron Pipe set by Schmit S-1192, shown on C.S.M. Vol. 5, Pg. 1302 as being on Section Line. Said pipe falls 7.28' South of Section Line.

Set and stamped 2" Oneida County Aluminum Monuments as "MC", as shown on this tie sheet. Tied out, set white Oneida County warning signs.

ALL TIES ARE TO 60 D SPIKE UNLESS NOTED.



ALL MEANDER CORNERS STAMPED "MC" CORNERS ARE ONEIDA COUNTY 2" ALUMINUM MONUMENTS. SET ONEIDA COUNTY WHITE WARNING POST NEXT TO M.C.

