

Stock No. 26273

CERTIFIED LAND CORNER RESTORATION

State of Wisconsin

County of Oneida

ss.

I, John H. Fisher, do hereby certify that on the 12 day of July, 1983, I found evidence of the Southeast corner of Section 28 Township 36 North Range 6 East, Fourth Principal Meridian, as described hereon; and that from this evidence I established a new ~~corner~~ accessories as described hereon to perpetuate the original location of this corner:

Description of original monument and accessories and subsequent restorations:

The original Government survey was performed by JOseph H. Jinkines, Deputy Surveyor in October 1862

Set Wood Post

Yellow Pine	10"	N64°E	45 links
Yellow Pine	10"	S15°E	28 links

Description of corner evidence found:

1-1/2" iron pipe 2 feet south of centerline of Point O'Pines Road.

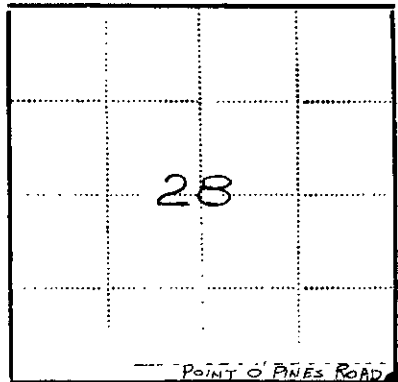
PK in Jack Pine	7"	S40°W	39.7 feet
Nail in White Birch	7"	N65°W	52.50 feet

Description of monument and accessories I established to perpetuate the location of this corner:

Corner in good condition

New Bearing Trees

Nail in Oak	5"	N36°E	35.10 feet
Nail in White Birch	11"	N 5°W	28.20 feet



- - Corner monument restored
- -

Resident witnesses None

Dated at Minocqua Wisconsin, this 29 day of July 1983.

Signature John H. Fisher Title Registered Land Surveyor (County Surveyor, Registered Land Surveyor, or other duly authorized official)

Surveyors Registration No.

Office of Register of Deeds County of Oneida

I hereby certify that the within instrument was filed in this office for record on the 11 day of June 1986, and was filed in Book No. Page No. of County Records.

Signature [Signature] Title Deputy Reg. Deeds

Township, Range, Section, Index No., Page No.

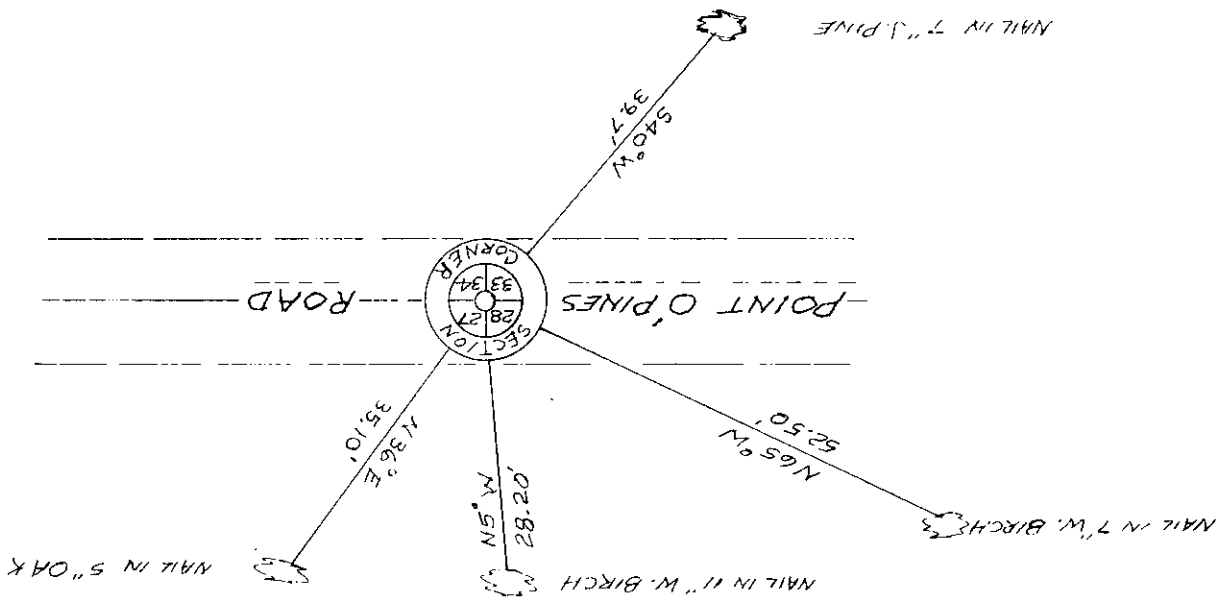
(f) to verify any material discrepancy between the location of the corner as restored or reestablished and the location of that corner as previously restored or reestablished by distance and direction. Show the discrepancy on the plan view drawing under (d). Show the distances between the corner as previously restored or reestablished and (1) the corner as restored or reestablished, and (2) to at least 2 of the witness monuments shown on the drawing in (d), above.

See drawing below

(1) Was the corner restored through acceptance of (1) an obliterated evidence location, or, (2) a found perpetuated location?

Found perpetuated location

(g,h) Was the corner reestablished through lost corner proportionate methods? If so, show the method, including the directions and distances to other public land survey corners used as evidence or used for proportioning in determining the corner location?



Affix Land Surveyor's

(Type or print name) certify that the corner location shown on this record was determined by me or under my direction and control and that this U.S. Public Land Survey Monument Record is correct and complete to the best of my knowledge and belief.

(1) John H. Fisher

Signature

Date

7/19/83