

# U.S. PUBLIC LAND SURVEY MONUMENT LOCATION RECORD

Recorders Data

CORNER: North 1/4 SECTION: 33 TOWNSHIP 36 NORTH RANGE 6 EAST/WEST

FOR M.C. CORNER INDICATE: NAME OF WATERWAY N/A SECTION LINE N/A

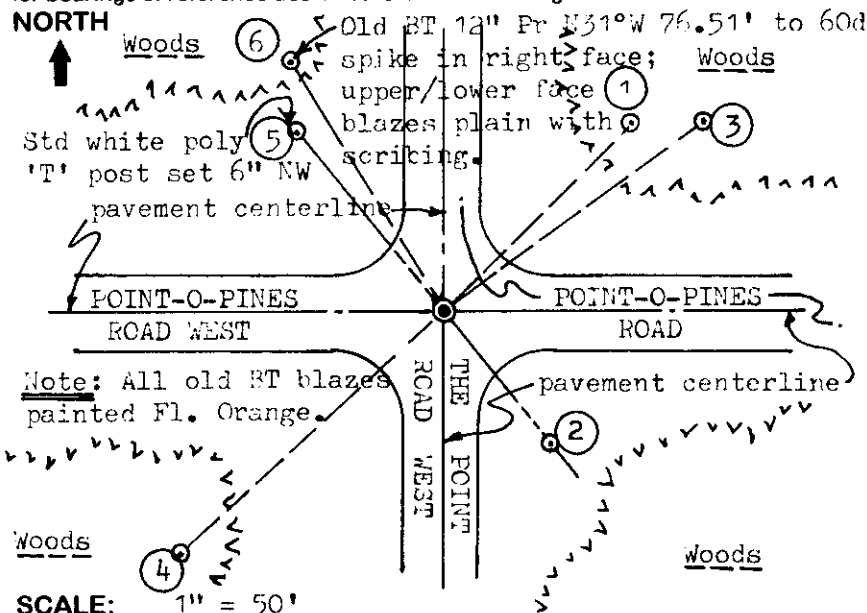
(CITY/VILLAGE/TOWN) OF: Nokomis COUNTY OF: Oneida

Description of monument found or placed and all other evidence used as a basis for monument location; including all monuments and related measurements required if the corner location is reestablished by lost corner proportionate methods. Also indicate name of original surveyor, survey date, corner monument set and established bearing trees, witness or reference monuments with ties from available records.

Found and accepted an old undisturbed 1 1/4" dia. iron pipe monument at this corner location with uncapped top 5" below existing blacktop pavement patch with a PK nail above center of iron pipe and bright orange circle painted around it recently by Austin for Oneida County GPS project in progress. I carefully drove a 3/4" dia. by 12" iron rod in the center of the iron pipe found, with top flush with roadway surface, and also drove 1/4" dia. by 2 1/2" long PK nails 1' North, South, East and West on cardinal right lines thru the corner center to aid future recovery and usage. In 1862, Jenkins/GLO set a wood post as the original corner and marked BTs, an 8" Pj N65°E 21 lks and an 8" Pj S32°E 22 lks, which are all now gone in roadway area. In 1970, Fisher/Northwoods Surveyors, notes monument found in center of road junction and BTs, a 5" Pj S44°W 92.5' and an 8" Pj N44°E 69.2', which I found and used for new ties, per his Plat of Survey, B-648, Oneida County records. In 1976, Schmit notes a 1 1/2" dia. iron pipe at the corner per his Plat of Survey, B-1314, Oneida County records, and also as a 1" iron pipe found with both Fisher 1970 BTs noted on record plat of Krystal Cove 1st Addition, excepting that tie to NE Fisher BT is in error by 1 foot. In 1981, J. Rein accepted this corner location iron pipe per his Plat of Survey, B-1126, Oneida County records, and also noted a 1" dia. iron rod N52°16'W 4.54' and a 1 1/4" dia. iron pipe N21°57'E 3.90' from the 1 1/4" dia. iron pipe accepted as the correct corner location; which I also confirmed by metal locator detection in roadway. By common report the 1970 location by Fisher prevails.

This recovery completed June 4, 1998; there were no witnesses other than vehicle drive-bys.

Plan view map of monument location with bearing and distance ties to a minimum of four(4) described witness or reference monuments of concrete, natural stone, iron, live bearing trees or equivalent material. If applicable, also show a minimum of two(2) bearing and distance ties to any other monument found and not accepted; including the bearing and distance from the accepted monument. Indicate the basis for bearings of reference ties if not referenced to magnetic north.



### WITNESS MONUMENT TIES:

- ① Old BT dead 13" Pj N45°E 69.51' to old 60d spike in right face, upper & lower blazes plain with scribing; nailed BT sign to SW face.
- ② 1 1/4" dia. iron pipe found with top uncapped 3" above grade and red top white plastic stake nearby, S38°E 41.44'.
- ③ New BT 18" Pr N54°E 84.65'.
- ④ Old BT 8" Pj S48°W 92.63' to old 60d spike in right face; upper blaze shut but plain, lower blaze open with scribing.
- ⑤ 1" dia. by 24" long iron pipe set with Ref. Mk cap N38°W 60.53'.

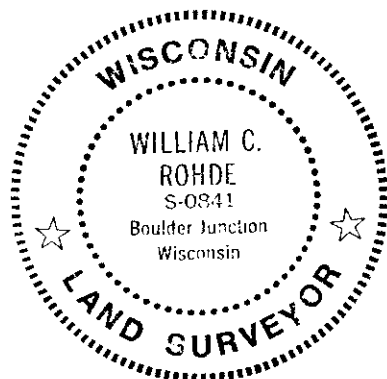
SCALE: 1" = 50'

Unless otherwise indicated, all bearing tree ties are to a .25" dia. by 2.5" long PK nail with a 1.25" dia. steel washer driven into unblazed right face and a .25" dia. by 2.5" long PK nail with a 2" dia. steel washer stamped 'BT' is also driven into unblazed face of bearing tree at DBH; the basis for measured bearings is magnetic to nearest degree and all tie distances are horizontal measure to nearest 1/100th feet.

### LAND SURVEYOR CERTIFICATION:

I, William C. Rohde, hereby certify that I am a duly licensed Professional Land Surveyor in Wisconsin, that this USPLS monument location was determined by me or under my direction and control, and that this U.S. Public Land Survey Monument Location Record is true and correct to the best of my knowledge and belief.

William C. Rohde Date: 6/11/98  
Signature



RLS SEAL

SHEET NO. 1 OF 1

	33		

SECTION LOCATION MAP

INDEX NO. V 11  
3606280020

INDEX NO. V 11

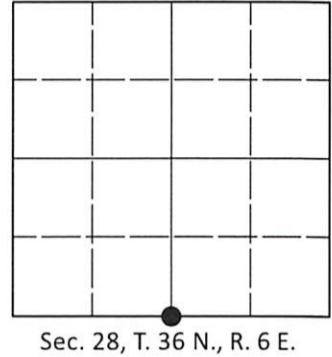
This form is intended to fulfill requirements of Chapter A-E 7.08 (3)(a)(b)(c)(d)(e)(f)(g)(h)(i) U.S. Public Land Survey Monument Location Record, Wisconsin Administrative Code. Use reverse side for geodetic location data and/or continuation purposes.

**U.S. PUBLIC LAND SURVEY MONUMENT RECORD**

Note: This form is intended and designed to fulfill all requirements of Wisconsin Administrative Code, Chapter A-E 7.08 U.S. Public Land Survey Monument Record (3)(a-i).

(a) CORNER LOCATION  
 1/4 Cor. of Secs. 28 & 33  
 Township 36 North  
 Range 6 East of the 4th P.M.  
 Town of Nokomis  
 County of Oneida

WISCRS - Oneida County  
 N: 140,121.48 USft  
 E: 178,649.27 USft  
 Datum: NAD 83(2011) ep. 2010.00  
 GNSS Method: RTN - Direct  
 GNSS Control: WISCRS VRS



Sec. 28, T. 36 N., R. 6 E.

(b)(f)(g)(h) Description of monument found at this corner and if it was accepted, state all evidence (material, testimonial, occupational, plats, records, other monuments) used as a basis for accepting. If not accepted or if nothing was found, state evidence used as basis for establishing location. If re-established through lost corner proportionate methods, indicate all monuments, distances and directions used to establish. Indicate type of monument and sign post found or set.

*This record is a perpetuation of the following land corner document(s):*

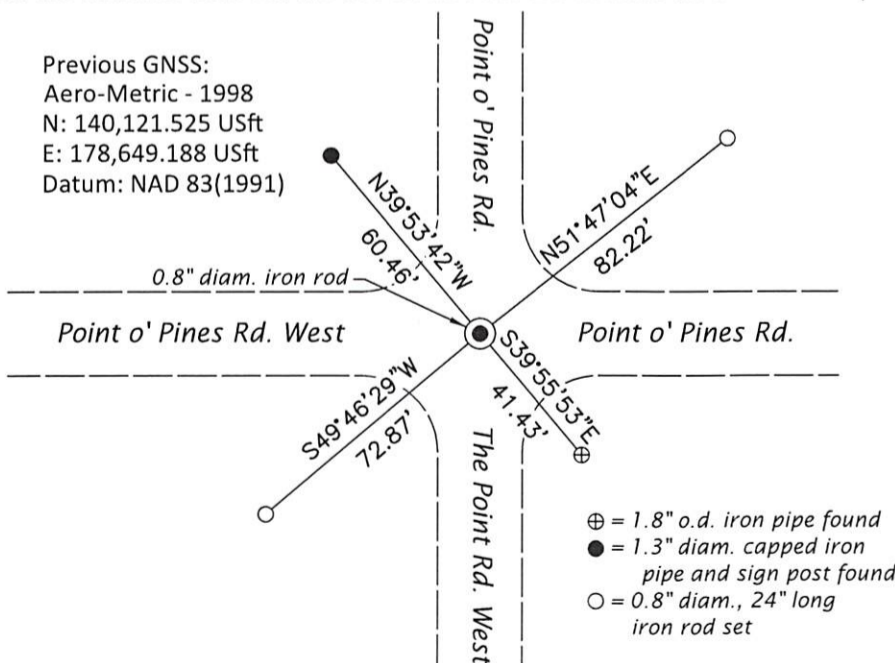
*June 11, 1998: USPLS Monument Record by William C. Rohde, filed in Oneida County*

*A complete history of the corner can be found on the previous land corner document(s). I accept the record activity as a true and faithful perpetuation or reestablishment of the original corner location and further perpetuate it as described below.*

*July 13, 2022: I found and accepted the record monument, a 0.8" diam. iron rod with the top bent, likely by a snow plow. In place of the plumb base of the bent rod, I set a 0.8" diam., 12" long iron rod at road centerline intersection. Record bearing tree #4 is standing dead; record bearing tree #1 is gone; record bearing tree #6 is in place at record bearing and distance. I found or established accessories as indicated below.*

*The coordinate value shown is the weighted mean of two or more GNSS observations at markedly different times satisfying the accuracy requirements defined and qualified in the 2022 Oneida County Fee Schedule for USPLS Corners.*

(c)(d)(e) Plan view of corner with ties to at least 4 witness monuments. If in disagreement with previously established corner, show the distances between the two corners and also indicate the ties to the disputed.



REGISTER OF DEEDS OFFICE  
 ONEIDA COUNTY  
 FILED

AUG 31 2022

KYLE J. FRANSON  
 REGISTER OF DEEDS

(i) I, Jeffrey W. Austin, Professional Land Surveyor No. S-1885, hereby certify that the corner location on this record was determined by me or under my direction and control and that this U.S. Public Land Survey Monument Record is correct and complete to the best of my knowledge and belief.

*[Handwritten Signature]*  
 Signature

AUG. 1, 2022  
 Date