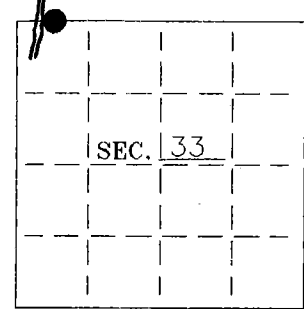


U. S. PUBLIC LAND SURVEY MONUMENT RECORD

Note: This form is intended and designed to fulfill all requirements of Wisconsin Administrative Code-Chapter A-E 7.08 U. S. Public Land Survey Monument Record (3)(a)(b)(c)(d)(e)(f)(g)(h)(i). An additional sheet may be added if necessary to conform with said requirements.

(a) CORNER LOCATION: State Plane Coordinates
 Meander corner of Sec. 28&33 X ---
 Township 36 North Y ---
 Range 06 East Datum Base ---
 Town/City Nokomis County of Oneida



(b) HISTORY OF ORIGINAL CORNER ESTABLISHMENT:

Original Surveyor: Joseph Jenkins
 Date of Survey: Commenced October, 1862
 Completed October, 1862

Original B.T.'S

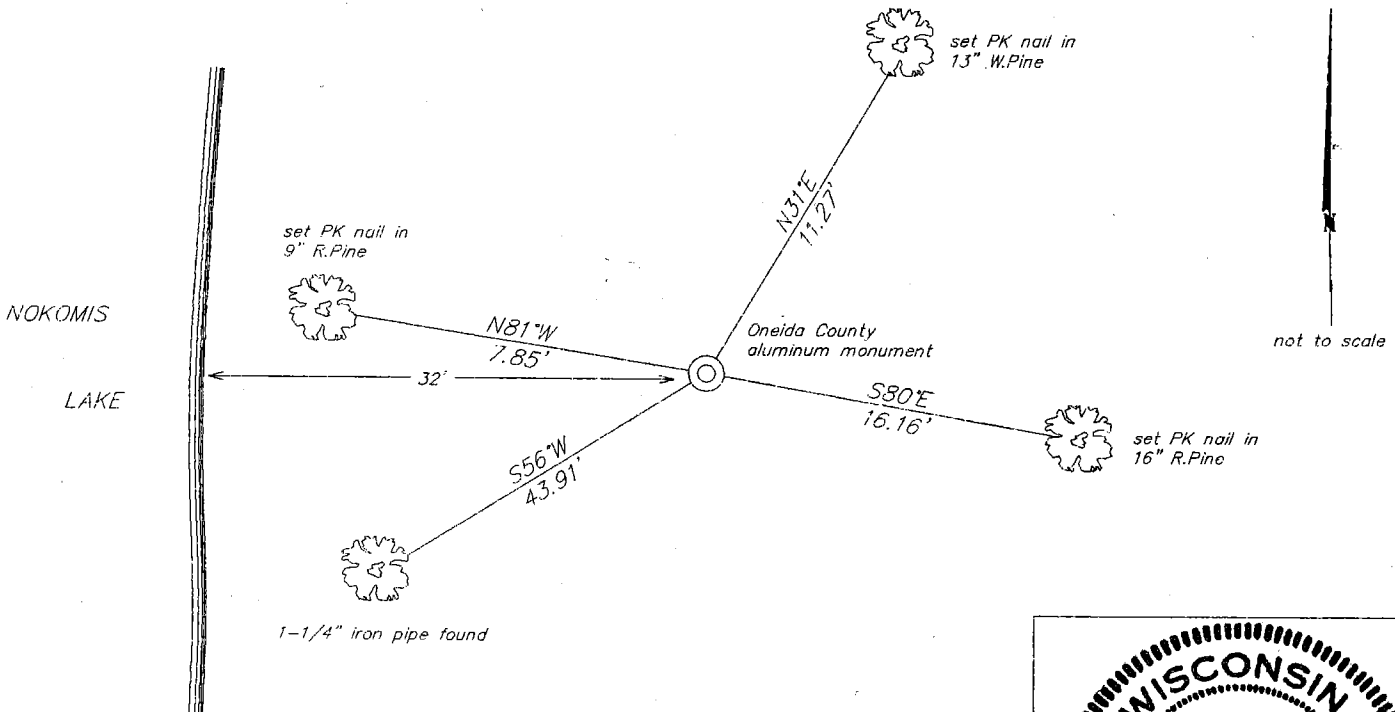
Elm 6" S42°W 50 lks
 No other tree near.

(b)(f)(g)(h) Description of monument found at this corner and if it was accepted—state all evidence (material—testimonial—occupation—plats—records—other monuments) used as a basis for accepting. If not accepted or if nothing was found state evidence used as basis for establishing location. If reestablished through lost corner proportionate methods indicate all monuments—distances and directions used to establish. Indicate type of monument and sign post found or set.

November, 1970: Map by John H. Fisher indicates corner is marked by an iron pipe set and witnessed by an erroneous iron pipe bearing S56°17'W, 43.8 feet.

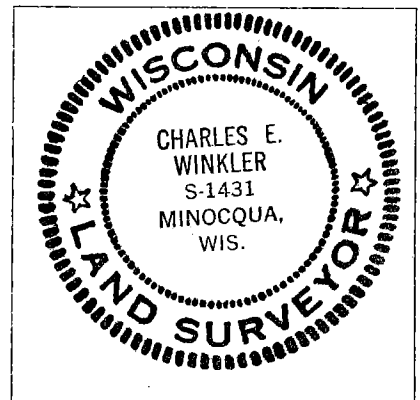
October 3, 1995: I found and accepted a 1" iron pipe witnessed by the erroneous pipe mentioned by Fisher. I replaced the pipe with a 2-1/2" dia., 30" long aluminum pipe with a 3-1/4" dia. Oneida Co. aluminum cap stamped to identify the corner location. I established accessories as shown below and set a plastic sign post North, 1 foot.

(c)(d)(e) Plan view of corner with ties to at least 4 witness monuments. If in disagreement with previously established corner—show the distances between the two corners and also indicate the ties to the disputed.



(i) I Charles E. Winkler, Registered Land Surveyor S-1431
 hereby certify that the corner location on this record was determined by me or under my direction and control and that this U.S. Public Land Survey Monument Record is correct and complete to the best of my knowledge and belief.

Charles E. Winkler 1-30-96
 Signature Foltz and Associates, Inc. Date



INDEX NO. V-9.10

366290028