

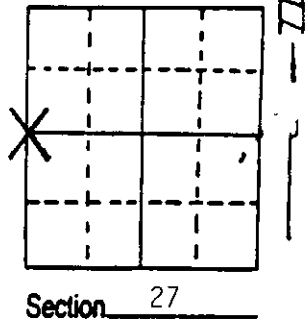
U.S. PUBLIC LAND SURVEY MONUMENT RECORD

Note: This form is intended and designed to fulfill all requirements of Wisconsin Administrative Code, Chapter A-E 7.08 U.S. Public Land Survey Monument Record (3) (a) (b) (c) (d) (e) (f) (g) (h) (i). An additional sheet may be added if necessary to conform with said requirements.

(a) Corner location: Township 36 North
Range 5E East/West

Town/City/Village ~~XXXXXX~~ Nokomis

County Oneida



(b) (f) (g) (h) Description of monument found at this corner and if it was accepted, state all evidence (material, testimonial, occupational, plats, records, other monuments) used as a basis for accepting. If not accepted or if nothing was found, state evidence used as basis for establishing location. If reestablished through lost corner proportionate methods, indicate all monuments, distances and directions used to establish. Indicate type of monument found or set and sign post.

Notes from Wisconsin Valley Improvement Company, date unknown, Surveyor unknown, say that West $\frac{1}{4}$ Corner or bearing trees could not be found. (before flowage)

Area is now flooded by Lake Nokomis. Using boat, and aerial photo, got as close to corner area as possible. Area is covered by floating bog. Any corner evidence would be buried. There was no area to place monument. Southerly is bog and open water, Northerly is bog, open water, and dense swamp.

Section summary on back of sheet should be used to determine corner location, on paper.

(c) (d) (e) Plan view of corner with ties to at least 4 witness monuments. If in disagreement with previously established corner, show the distances between the two corners and also indicate the ties to the disputed corner.

NO CORNER SET

(i) I, David L. Osterbrink RLS No. S-2014
(type or print name) certify that the corner location on this record was determined by me or under my direction and control and that this U.S. Public Land Survey Monument Record is correct and complete to the best of my knowledge and belief.

David L. Osterbrink 8-25-93
Signature Date



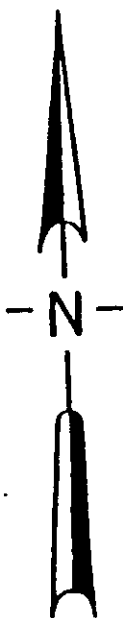
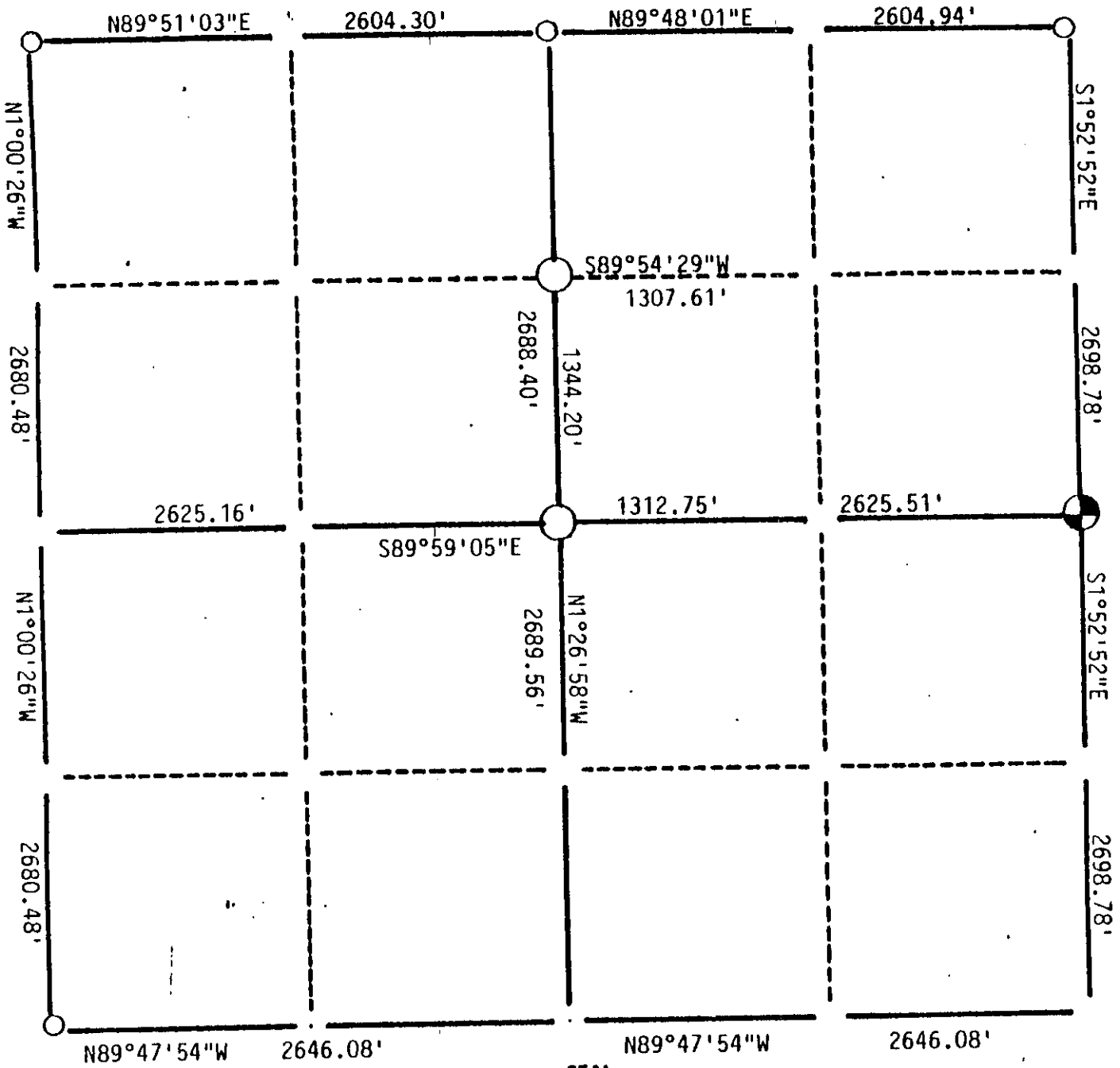
Index No. T-13

Stamp
3606282000

SECTION SUMMARY

27 - 36 - 6
Section - Town - Range

Nokomis
Township



LEGEND

- - Oneida County 2" Aluminum capped monument
- - Stone or Concrete Monument
- - 2" Iron Pipe
- - 1" Iron Pipe
- - Iron Bar
- Other

CERTIFIED CORRECT:

David L. Osterbrink RLS No. S-2014
Registered Land Surveyor

DATE: 8-24-93

