

# U.S. PUBLIC LAND SURVEY MONUMENT LOCATION RECORD

Recorders Data

CORNER: NW Section SECTION: 33 TOWNSHIP 36 NORTH RANGE 6 EAST/WEST

FOR M.C. CORNER INDICATE: NAME OF WATERWAY N/A SECTION LINE N/A

(CITY)(VILLAGE)(TOWN) OF: Nokomis COUNTY OF: Oneida

Description of monument found or placed and all other evidence used as a basis for monument location; including all monuments and related measurements required if the corner location is reestablished by lost corner proportionate methods. Also indicate name of original surveyor, survey date, corner monument set and established bearing trees, witness or reference monuments with ties from available records.

Found and accepted an undisturbed 1 1/2" dia. iron pipe monument with uncapped top 6" above existing grade at this corner location. I carefully pulled the old iron pipe, 31" long, and reset the corner with a standard 2" dia. by 30" long aluminum pipe monument with stamped Oneida County aluminum cap 1" above grade. I left the older monument flat on grade at North side of the reset monument, and set a standard white poly 'T' marker post 6" East. The corner is 11.3' East of the East edge of existing blacktop roadway pavement in a small grassy area.

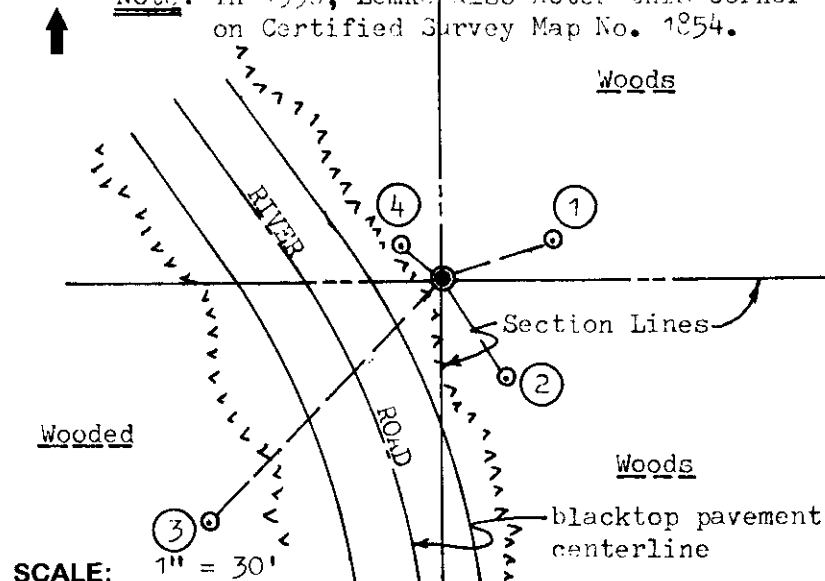
In 1862, Jenkins/GLO set a wood post as the original corner and marked BTs, a 20" Py S06°W 127 lks, a 10" Pj N22°E 152 lks and a 10" Pj S81°E 125 lks, all of which are obliterated.

In 1966, Griffin/Northwoods Surveyors, found and accepted an iron pipe in place at this corner and noted BTs, a 13" Pj N54°W 8.0' and a 14" Pj S32°E 18.1', which I found as Pr and used for new ties below. The old NW BT has a plain open lower face blaze scribed 'SEC 7.8' and old SE BT has a plain open lower face blaze scribed 'SEC 18.0'; and both have a PK nail with ribbon driven into each face. I also found an older BT 8" Pj with plain open lower face scribed 'SC BT' and also with a ribboned PK driven into the face, which I also used for new ties. I painted open faces of these old BTs blaze orange. I also found an older BT 14" Bw with lower face blaze nearly shut but plain with scribing, which I used for new ties.

This recovery completed June 3, 1998; there were no witnesses other than vehicle drive-bys.

Plan view map of monument location with bearing and distance ties to a minimum of four(4) described witness or reference monuments of concrete, natural stone, iron, live bearing trees or equivalent material. If applicable, also show a minimum of two(2) bearing and distance ties to any other monument found and not accepted; including the bearing and distance from the accepted monument. Indicate the basis for bearings of reference ties if not referenced to magnetic north.

**NORTH** Note: In 1996, Lemke also notes this corner on Certified Survey Map No. 1854.

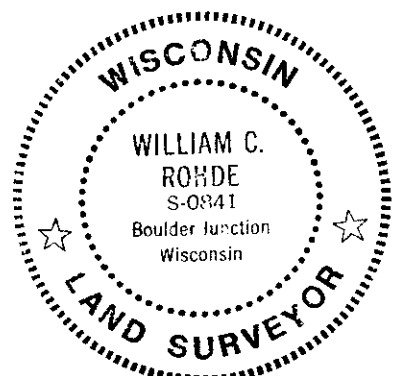


**WITNESS MONUMENT TIES:**

- ① Old BT 8" Pj N73°E 18.07'.
- ② Old BT 17" Pr S31°E 18.38'.
- ③ Old BT 14" Bw S44°W 53.40'.
- ④ Old BT 15" Pr N51°W 8.20'.

Note: All new ties are to new PK nails with washer set in lower right face of each BT. I also nailed a standard Do Not Disturb BT sign on face of Witness BTs 2, 3 & 4 due to proximity adjoining road.

Unless otherwise indicated, all bearing tree ties are to a .25" dia. by 2.5" long PK nail with a 1.25" dia. steel washer driven into unblazed right face and a .25" dia. by 2.5" long PK nail with a 2" dia. steel washer stamped 'BT' is also driven into unblazed face of bearing tree at DBH; the basis for measured bearings is magnetic to nearest degree and all tie distances are horizontal measure to nearest 1/100th feet.



**LAND SURVEYOR CERTIFICATION:**

I, William C. Rohde, hereby certify that I am a duly licensed Professional Land Surveyor in Wisconsin, that this USPLS monument location was determined by me or under my direction and control, and that this U.S. Public Land Survey Monument Location Record is true and correct to the best of my knowledge and belief.

William C. Rohde Date: 6-11-98  
Signature

	33		

**SECTION LOCATION MAP**

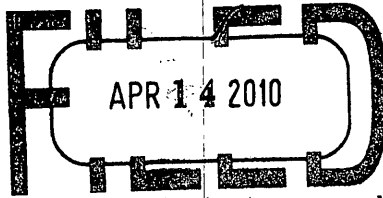
INDEX NO. V 9  
3606290000

INDEX NO. V 9

RLS SEAL

SHEET NO. 1 OF 1

This form is intended to fulfill requirements of Chapter A-E 7.08 (3)(a)(b)(c)(d)(e)(f)(g)(h)(i) U.S. Public Land Survey Monument Location Record, Wisconsin Administrative Code. Use reverse side for geodetic location data and/or continuation purposes.

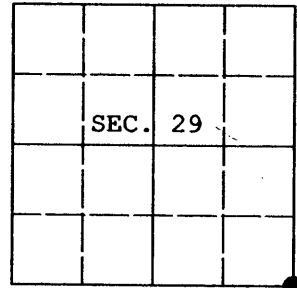


At \_\_\_\_\_ O'Clock \_\_\_\_\_ M

U.S. PUBLIC LAND SURVEY MONUMENT RECORD

Note: This form is intended and designed to fulfill all requirements of Wisconsin Administrative Code, Chapter A-E 7.08 U.S. Public Land Survey Monument Record (3) (a) (b) (c) (d) (e) (f) (g) (h) (i). An additional sheet may be added if necessary to conform with said requirements.

(a) CORNER LOCATION: Plane Coordinates
Cor. of Secs. 28, 29, 32, 33 X:
Township 36 North Y:
Range 6 East of the 4th P.M. Datum:
Town of Nokomis County of Oneida



(b) HISTORY OF ORIGINAL CORNER ESTABLISHMENT

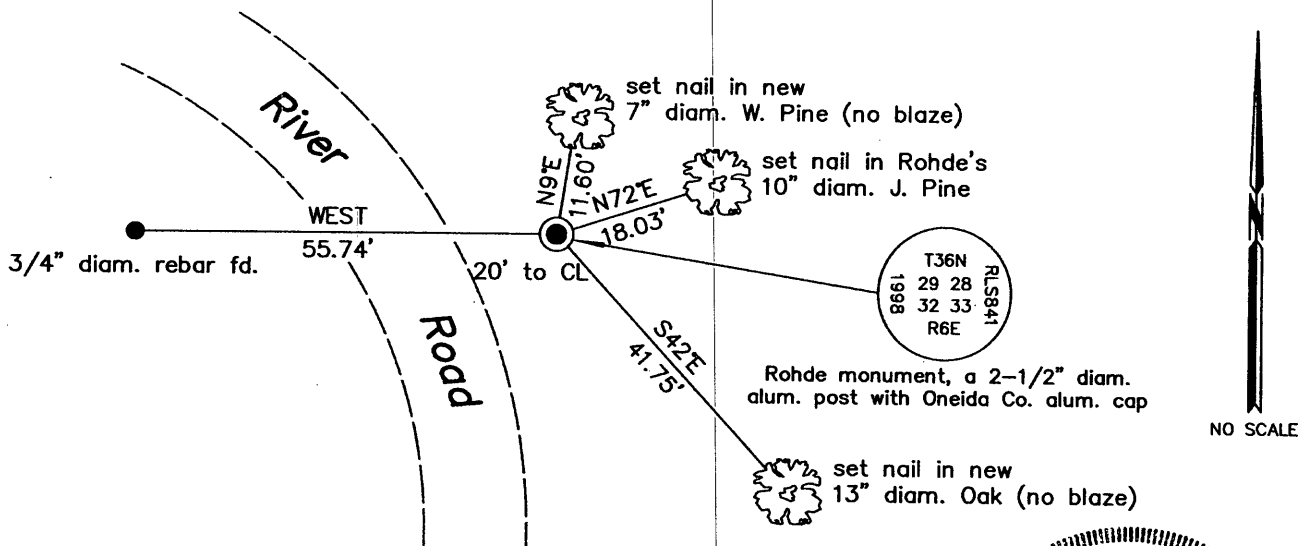
Original Surveyor: Joseph Jenkins Original Accessories:
Date of Survey: Commenced October, 1862 Y. Pine 20" S.6°W., 127 lks.
Completed October, 1862 B. Pine 10" N.22°E., 152 lks.
B. Pine 10" S.81°E., 125 lks.

(b) (f) (g) (h) Description of monument found at this corner and if it was accepted, state all evidence (material, testimonial, occupational, plats, records, other monuments) used as a basis for accepting. If not accepted or if nothing was found, state evidence used as basis for establishing location. If re-established through lost corner proportionate methods, indicate all monuments, distances and directions used to establish. Indicate type of monument and sign post found or set.

NOTE: This is a perpetuation of a previous USPLS Monument Record by William C. Rohde, RLS dated June 11, 1998 and filed in the office of the Oneida County Register of Deeds. A complete history of the corner can be found on the previous monument record. I accept the previous location as a true and faithful perpetuation or reestablishment of the original corner location and further perpetuate it as follows.

November 7, 2009: I found and accepted Rohde's monument, a 2-1/2 ins. diam. aluminum post with Oneida Co. aluminum cap flush with the ground surface. All of Rohde's trees except the NE are either dead or have been recently cut. I established new accessories as shown below and found a white plastic sign post adjacent to the monument.

(c) (d) (e) Plan view of corner with ties to at least 4 witness monuments. If in disagreement with previously established corner, show the distances between the two corners and also indicate the ties to the disputed.



(i) I, Jeffrey W. Austin, Registered Land Surveyor No. S-1885, hereby certify upon honor that the corner location on this record was determined by me or under my direction and control and that this U.S. Public Land Survey Monument Record is correct and complete to the best of my knowledge and belief.

Signature [Handwritten Signature]

Date MAR. 30, 2010



3606290000

INDEX NO. V-9