

**CERTIFIED LAND CORNER RESTORATION**  
**U. S. Public Land Survey Monument Record**

Index No. V-7

State of Wisconsin }  
 County of Oneida } ss.

I John H. Fisher, do hereby certify that on the 23 day of June, 1983, I found evidence of the North one quarter corner of Section 32, Township 36, North, Range 6 East, Fourth Principal Meridian, as described hereon; and that from this evidence I established a new monument and accessories as described hereon to perpetuate the original location of this corner.

Resident witnesses:  
None

History of original corner establishment:  
 The original Government Survey was performed by Joseph H. Jenkins, Deputy Surveyor in October 1862  
 Wood Post Set:

|            |     |       |          |
|------------|-----|-------|----------|
| Black Pine | 10" | N20°E | 39 Links |
| Black Pine | 10" | N 9°W | 41 Links |

Description of corner evidence found:  
1-1/2" iron pipe in centerlines of County Trunk Highway "A" and Lee Road.  
0.20 below flush

Description of monument and accessories: I established to perpetuate the original location of this corner. I set railroad spike in 1-1/2" iron pipe and established bearing trees.

|                     |    |       |            |
|---------------------|----|-------|------------|
| Nail in Norway Pine | 8" | N40°W | 84.41 feet |
| Nail in Norway Pine | 7" | N62°E | 55.35 feet |
| Nail in Norway Pine | 7" | S46°E | 64.58 feet |

U.S.G.S. benchmark 4" Brass Cap in 8" X 8" concrete monument, N21°E 61.20 feet

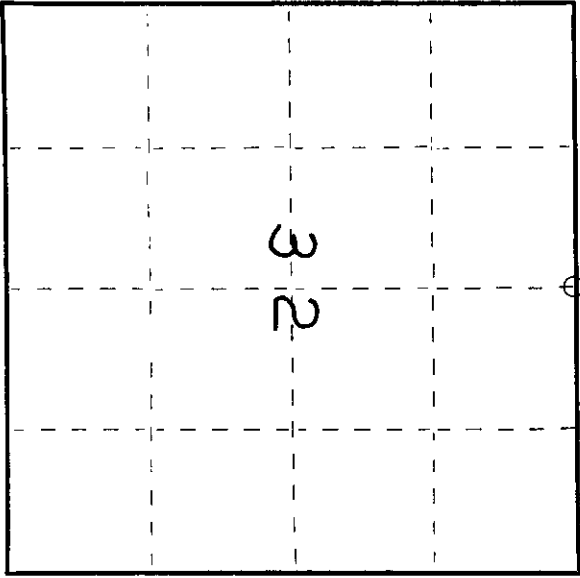
Dated at Minocqua, Wis., this 4th day of October, 1983.

Signature [Signature] Title Registered Land Surveyor Registration No. 5-836  
 (County Surveyor, Registered Land Surveyor, or other duly authorized official)

Office of Register of Deeds, County of Oneida, 18th day of January, 1984  
 at 10:00 o'clock A. M.

[Signature] (Register of Deeds)  
 Compared with all record data and accepted as correct.

By: [Signature] Deputy [Signature] Oneida County Surveyor date 18 JAN 1984



○ = Corner monument restored.

0200229093

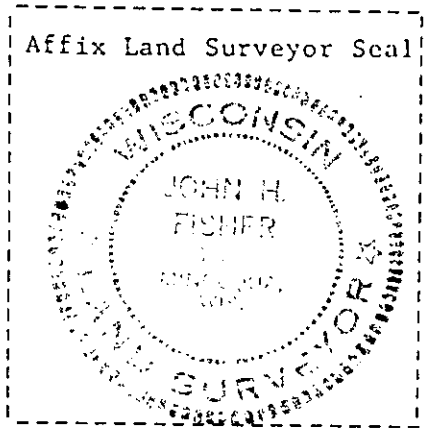
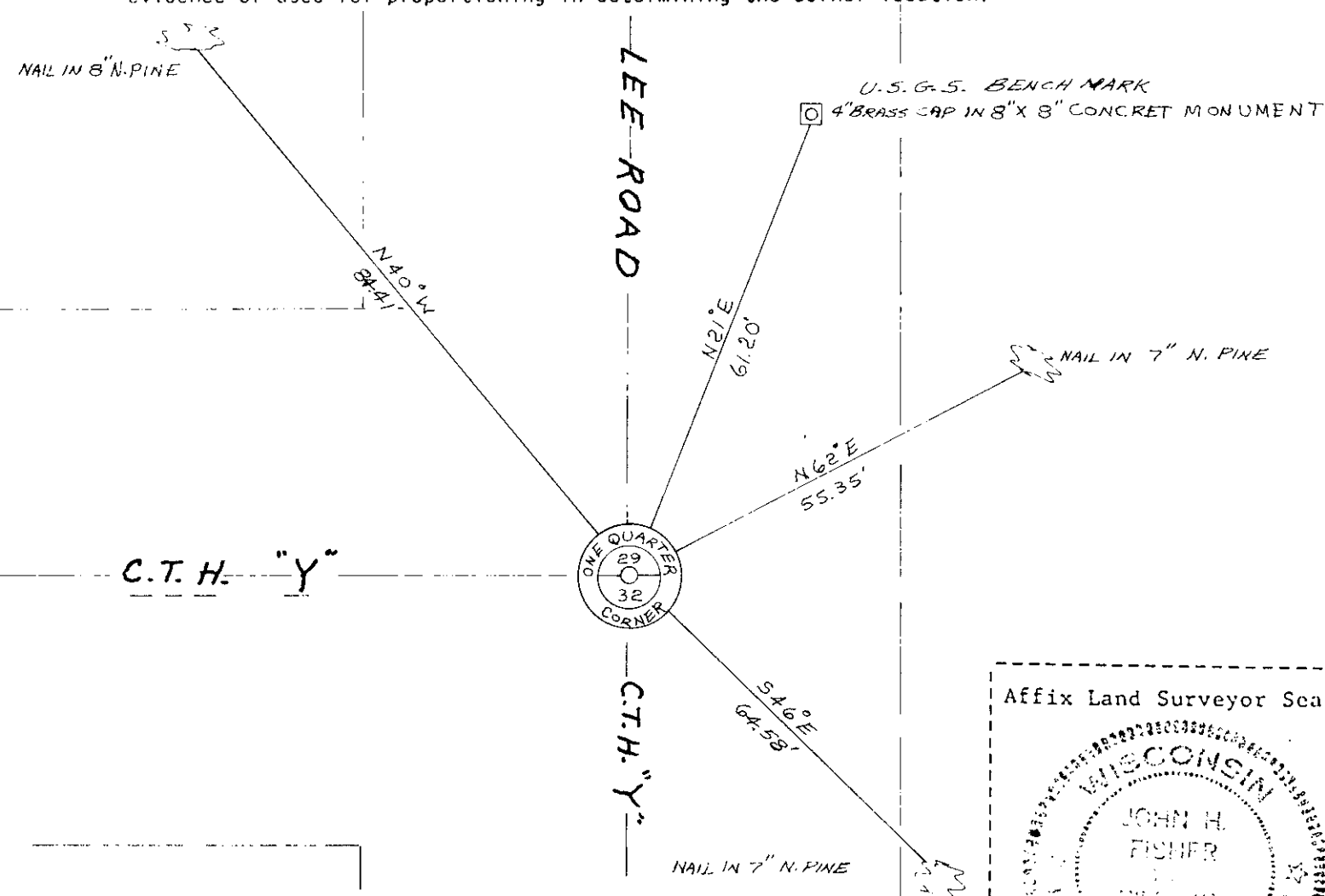
(c) Describe any material discrepancy between the location of the corner as restored or reestablished and the location of that corner as previously restored or reestablished by distance and direction. Show the discrepancy on the plan view drawing under (d), above. Show the distances between the corner as previously restored or reestablished and (1) the corner as restored or reestablished, and (2) to at least 2 of the witness monuments shown on the drawing in (d), above.

see Drawing Below

(f) Was the corner restored through acceptance of (1) an obliterated evidence location, or, (2) a found perpetuated location?

Found perpetuated location

(g&h) Was the corner reestablished through lost corner proportionate methods? If so, show the method, including the directions and distances to other public land survey corners used as evidence or used for proportioning in determining the corner location?



John H. Fisher

(i) I, John H. Fisher (type or print name) certify that the corner location shown on this record was determined by me or under my direction and control and that this U.S. Public Land Survey Monument Record is correct and complete to the best of my knowledge and belief.

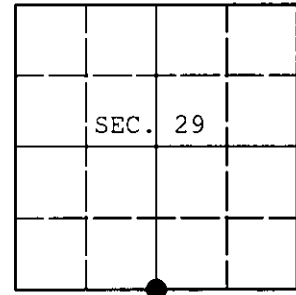
John H. Fisher  
Signature

10/4/83  
Date

**U.S. PUBLIC LAND SURVEY MONUMENT RECORD**

Note: This form is intended and designed to fulfill all requirements of Wisconsin Administrative Code, Chapter A-E 7.08 U.S. Public Land Survey Monument Record (3) (a) (b) (c) (d) (e) (f) (g) (h) (i). An additional sheet may be added if necessary to conform with said requirements.

(a) CORNER LOCATION: WISCORS - Oneida County  
 1/4 Cor. of Secs. 29 & 32 N: 140,101.43 USft  
 Township 36 North E: 173,366.43 USft  
 Range 6 East of the 4th P.M. Datum: NAD 1983(2011)  
 Town of Nokomis County of Oneida



(b) HISTORY OF ORIGINAL CORNER ESTABLISHMENT

Original Surveyor: \_\_\_\_\_ Original Accessories: \_\_\_\_\_  
 Date of Survey: Commenced: \_\_\_\_\_  
 Completed: \_\_\_\_\_

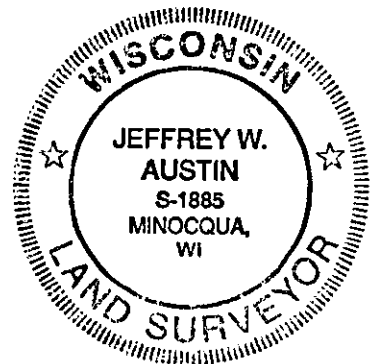
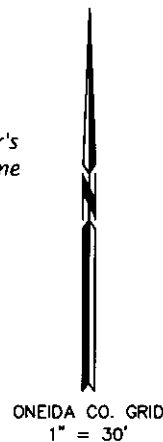
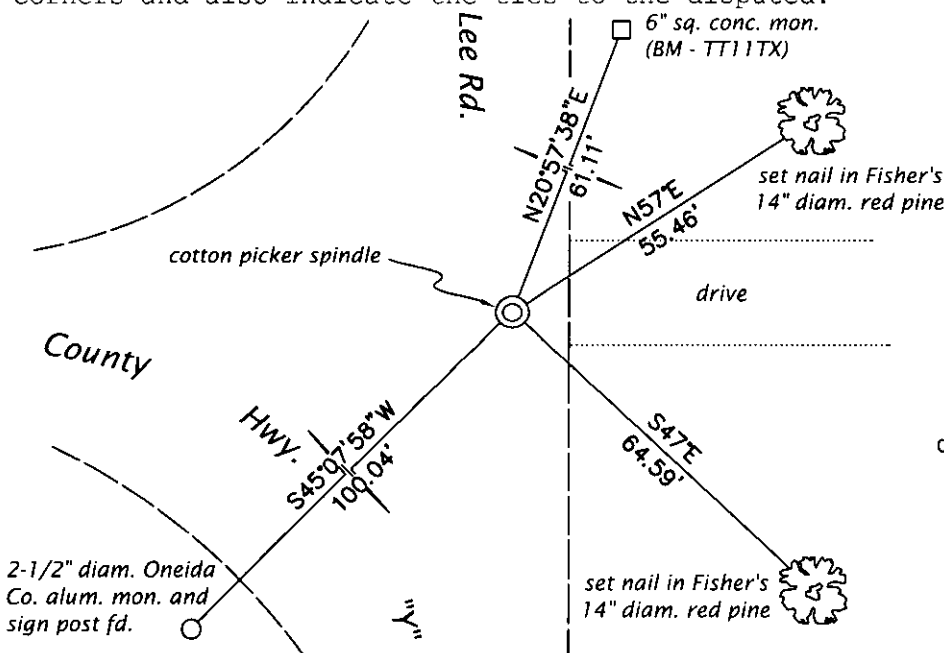
(b) (f) (g) (h) Description of monument found at this corner and if it was accepted, state all evidence (material, testimonial, occupational, plats, records, other monuments) used as a basis for accepting. If not accepted or if nothing was found, state evidence used as basis for establishing location. If re-established through lost corner proportionate methods, indicate all monuments, distances and directions used to establish. Indicate type of monument and sign post found or set.

*This is a perpetuation of a previous USPLS Monument Record by John H. Fisher, RLS dated October 4, 1983 and filed in the office of the Oneida County Register of Deeds. A complete history of the corner can be found on the previous monument record. I accept the previous location as a true and faithful perpetuation or reestablishment of the original corner location and further perpetuate it as follows.*

June 27, 2013: Prior to road construction, I found and accepted a perpetuation of the record monument, a railroad spike in the road intersection. I performed a GPS observation referenced to the WISCORS GNSS Network. I found or established accessories as shown below.

August 8, 2015: Following road construction, I returned and set a cotton picker spindle at the corner point from the reference monuments established previously. I performed a second GPS observation referenced to the WISCORS GNSS Network. The coordinates shown are the mean of the two observations that differed by 0.02 ft.

(c) (d) (e) Plan view of corner with ties to at least 4 witness monuments. If in disagreement with previously established corner, show the distances between the two corners and also indicate the ties to the disputed.




REGISTER OF DEEDS OFFICE  
 ONEIDA COUNTY  
 FILED

OCT 15 2015

AT \_\_\_\_\_ O'CLOCK \_\_\_\_\_ M  
 KYLE J. FRANSON  
 REGISTER OF DEEDS

(i) I, Jeffrey W. Austin, Professional Land Surveyor No. S-1885, hereby certify that the corner location on this record was determined by me or under my direction and control and that this U.S. Public Land Survey Monument Record is correct and complete to the best of my knowledge and belief

Signature  Date OCT. 11, 2015