

CERTIFIED LAND CORNER RESTORATION

Index No. V-6

State of Wisconsin

County of Oneida } ss.

I Glen Barker do hereby

certify that on the 5th day

of established March 19 84, I found

corner of Sections 29 & 32

Township 36 North, Range

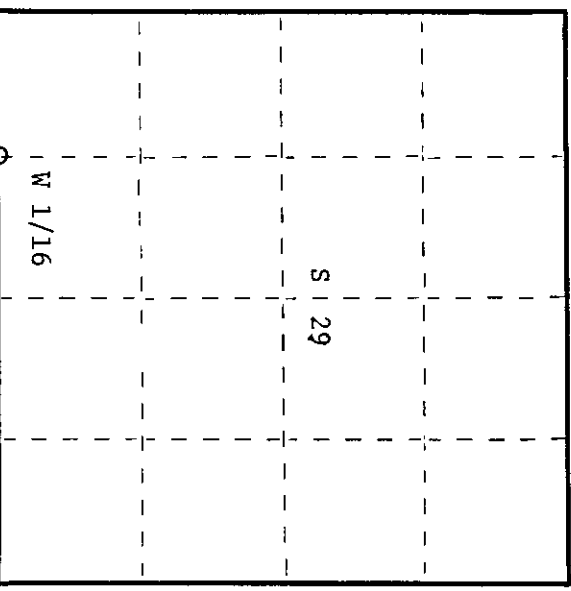
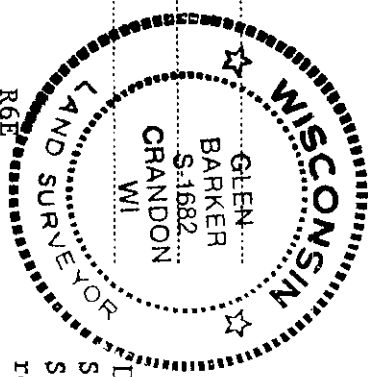
6 East, Fourth Principal Meridian,

as described hereon; and that from this evidence I established a new monument and accessories as described hereon to perpetuate the original location of this corner.

Resident witnesses:

J. Claflin - RLS

H. Wagoner



History of original corner establishment:

2" Iron pipe for reference monument north 29.0' of true position in C.T.H. 'Y'.

Description of corner evidence found:

Total distance from section corner 29-30-31-32 to 1/4 corner between sections 29 and 32 is 2646.06'.
Set W 1/16 1323.03' intermediate.

Description of monument and accessories I established to perpetuate the original location of this corner.

Set a railroad spike 3.0' north of center line of C.T.H. 'Y' for true corner.

Set a 1" iron pipe with 2" diameter alloy cap 30.0' north of true corner for reference monument - cap stamped:
Marked NBT

Jack pine 10" S5°E 30.33' S1682 T36N R6E
Previously blazed and scribed W 1/16 S 29 Ref.
Power pole #3606 - 29L4 - N79E 119.12' S 32 Cor.
S. 30 ft.
GPI - 1984

Dated at Rhinelander Wis., this 19th day of April, 1984

Signature *Glen Barker* Title Registered Land Surveyor Registration No. 1682
(County Surveyor, Registered Land Surveyor, or other duly authorized official)

Office of Register of Deeds, County of Oneida
at 11:25 o'clock a.m. I hereby certify that the within instrument was filed in this office for record on the 23rd day of May, 1984

Signature *Donna Leeger Fuchs*
(Register of Deeds)

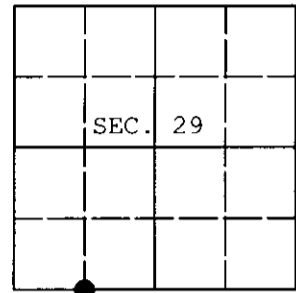
By Deputy

2606290020

U.S. PUBLIC LAND SURVEY MONUMENT RECORD

Note: This form is intended and designed to fulfill all requirements of Wisconsin Administrative Code, Chapter A-E 7.08 U.S. Public Land Survey Monument Record (3) (a) (b) (c) (d) (e) (f) (g) (h) (i). An additional sheet may be added if necessary to conform with said requirements.

(a) CORNER LOCATION: WISCORS - Oneida County
 W 1/16 Cor. of Secs. 29 & 32 N: 140,099.29 USft
 Township 36 North E: 172,043.40 USft
 Range 6 East of the 4th P.M. Datum: NAD 1983(2011)
 Town of Nokomis County of Oneida



(b) HISTORY OF ORIGINAL CORNER ESTABLISHMENT

Original Surveyor: Original Accessories:
 Date of Survey: Commenced:
 Completed:

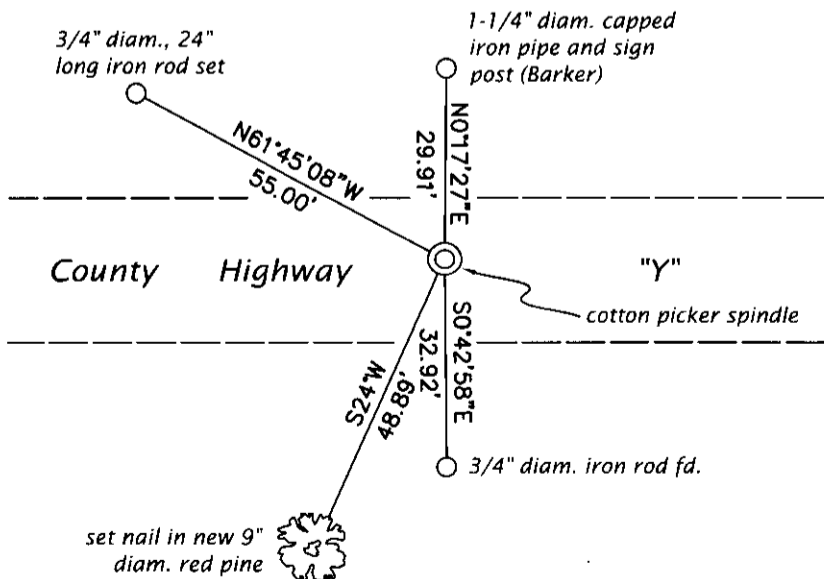
(b) (f) (g) (h) Description of monument found at this corner and if it was accepted, state all evidence (material, testimonial, occupational, plats, records, other monuments) used as a basis for accepting. If not accepted or if nothing was found, state evidence used as basis for establishing location. If re-established through lost corner proportionate methods, indicate all monuments, distances and directions used to establish. Indicate type of monument and sign post found or set.

This is a perpetuation of a previous USPLS Monument Record by Glen Barker, RLS dated April 19, 1984 and filed in the office of the Oneida County Register of Deeds. A complete history of the corner can be found on the previous monument record. I accept the previous location as a true and faithful perpetuation or reestablishment of the original corner location and further perpetuate it as follows.

June 27, 2013: Prior to road construction, I found and accepted a perpetuation of the record monument, a PK nail 2 ft. North of the centerline of County Highway Y. I performed a GPS observation referenced to the WISCORS GNSS Network. I found or established accessories as shown below.

August 8, 2015: Following road construction, I returned and set a cotton picker spindle at the corner point from the reference monuments established previously. I performed a second GPS observation referenced to the WISCORS GNSS Network. The coordinates shown are the mean of the two observations that differed by 0.10 ft.

(c) (d) (e) Plan view of corner with ties to at least 4 witness monuments. If in disagreement with previously established corner, show the distances between the two corners and also indicate the ties to the disputed.



REGISTER OF DEEDS OFFICE
 ONEIDA COUNTY
 FILED

OCT 15 2015

AT O'CLOCK
 KYLE J. FRANSON
 REGISTER OF DEEDS

(i) I, Jeffrey W. Austin, Professional Land Surveyor No. S-1885, hereby certify that the corner location on this record was determined by me or under my direction and control and that this U.S. Public Land Survey Monument Record is correct and complete to the best of my knowledge and belief.

Signature

OCT. 11, 2015

Date

3606290030 (INDEX NO. V-6)