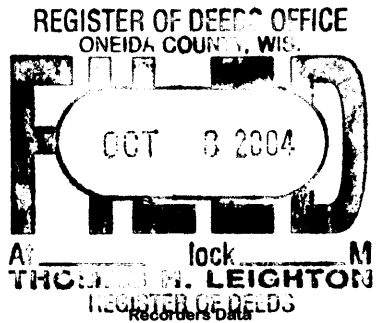


This form is intended to fulfill the requirements of Chapter A-E7.08 (3)(a) thru (i) U.S. Public Land Survey Monument Location Record, Wisconsin Administrative Code. Use the reverse side of form for continuation.



**U.S. PUBLIC LAND SURVEY MONUMENT LOCATION RECORD**

USPLS CORNER: SOUTH WIT MC SECTION: 28 TOWNSHIP: 36 NORTH RANGE: 6 EAST  
 NAME OF WATERWAY FOR M.C. CORNER : LAKE NOKOMIS SECTION LINE: WEST  
 (CITY)(VILLAGE)(TOWN) OF: NOKOMIS COUNTY OF: ONEIDA

Description of monument found or placed and all other evidence used as the basis for monument location; including monuments and measurements required if the corner location was reestablished by lost corner proportionate methods. Also indicate name of the original surveyor, original survey date and the corner monument, bearing trees, witness or other reference monuments established, including measured bearing and distance ties, from available survey records.

Found and accepted an older 1.5" dia. galvanized iron pipe with uncapped top 2" below grade at northerly edge of woods roadway turn-around from the West. I carefully removed the 30" long iron pipe and set a standard 2" dia. x 30" long aluminum pipe monument with stamped Oneida County cap 3.5" below grade into plumb soil cavity left by the iron pipe. I left old iron pipe flat on grade at East face of 17" Pr BT S52°E.

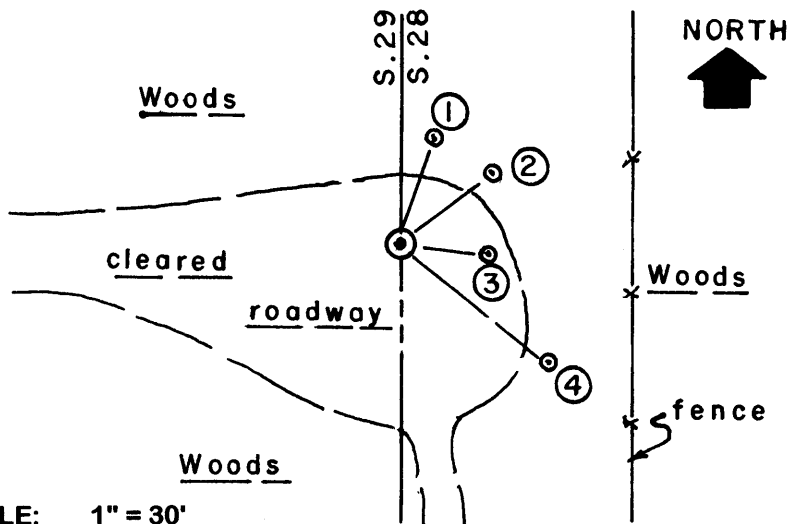
In October 1862, Joseph H. Jenkins/GLO did not set an MC South of the West 1/4 corner of Section 28 per record original survey notes, as the entire section line ran on upland its entire length at that time, before impoundment of the Tomahawk River.

This corner previously located per Oneida County GPS control survey records at UTM 285004 dE /5050719dN.

The Plat of Running Acres filed in Oneida County records, as approved by the State in November 1966, indicates a 1.5" dia. iron pipe at this corner per plat legend, as drafted by Stuart L. Foltz/RLS 1170.

This recovery completed July 21, 2004; there were no direct witnesses.

Plan view map of monument location with bearing and distance ties to a minimum of four(4) described witness or reference monuments of concrete, natural stone, iron, live bearing trees or equivalent material. If applicable, also show a minimum of two(2) bearing and distance ties to any other monument found and not accepted; including the bearing and distance from the accepted monument.



SCALE: 1" = 30'

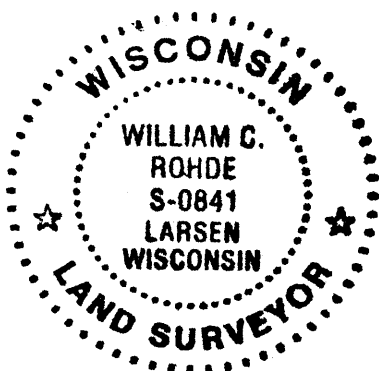
Unless otherwise indicated, all bearing tree ties are to a .25" dia. by 2.5" long PK nail with a 1.25" dia. steel washer driven into unblazed right face and a .25" dia. by 2.5" long PK nail with a 2" dia. steel washer stamped BT is also driven into unblazed face of bearing tree at DBH; the basis for measured bearings is by compass to nearest degree and all tie distances are measured horizontal by steel tape corrected to nearest 1/100th feet at standard temperature of 68° F.

**WITNESS MONUMENT TIES:**

- ① New 14" Pr BT N18°E 18.03'
- ② Old 20" Pr BT N51°E 18.63' with lower blaze open & scribed.
- ③ Old 16" Pw BT S86°E 13.35' with face blaze nearly shut.
- ④ Old 17" Pr BT S52°E 29.60' to PK & washer in left faceroot crown; face blaze shut but fissure scar plain.

I set a standard white poly 'T' marker post 8" South of new corner monument.

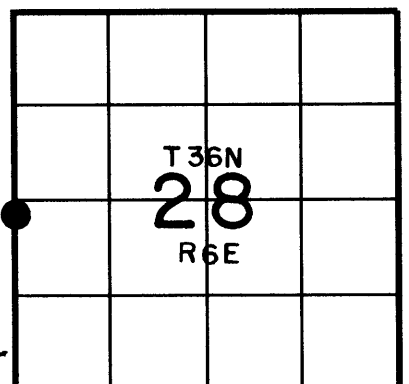
RLS SEAL:



**LAND SURVEYOR CERTIFICATE:**

I, William C. Rohde, hereby certify that I am duly licensed as a Professional Land Surveyor in the State of Wisconsin; that this USPLS monument location was determined by me and/or under my direct supervision and control; and that this U.S. Public Land Survey Monument Location Record is true and correct to the best of my knowledge and belief.

Signed: *William C. Rohde*  
 William C. Rohde RLS 841



SECTION LOCATION MAP  
 INDEX NO. T-4 9