

This form is intended to fulfill the requirements of Chapter A-E7.08 (3)(a) thru (i) U.S. Public Land Survey Monument Location Record, Wisconsin Administrative Code. Use the reverse side of form for continuation.

U.S. PUBLIC LAND SURVEY MONUMENT LOCATION RECORD

USPLS CORNER: WITNESS CORNER SECTION: 29 TOWNSHIP: 36 NORTH RANGE: 6 EAST
 NAME OF WATERWAY FOR M.C. CORNER : LAKE NOKOMIS SECTION LINE: C1/4 LINE
 (CITY)(VILLAGE)(TOWN) OF: NOKOMIS COUNTY OF: ONEIDA

Description of monument found or placed and all other evidence used as the basis for monument location; including monuments and measurements required if the corner location was reestablished by lost corner proportionate methods. Also indicate name of the original surveyor, original survey date and the corner monument, bearing trees, witness or other reference monuments established, including measured bearing and distance ties, from available survey records.

Found and accepted an older 1.5" dia. galvanized iron pipe with uncapped top 2" above grade and a standard white poly "T" marker post 5" East. I carefully removed the 30" long iron pipe and set a standard 2" dia. by 30" long aluminum pipe monument with stamped Oneida County cap to 4" above grade into plumb soil cavity left by the old iron pipe, which I left flat on grade nearby. This witness corner was previously located per Oneida County GPS control survey records at UTM: 284946 dE and 5050794 dN. No original GLO original survey field notes apply.

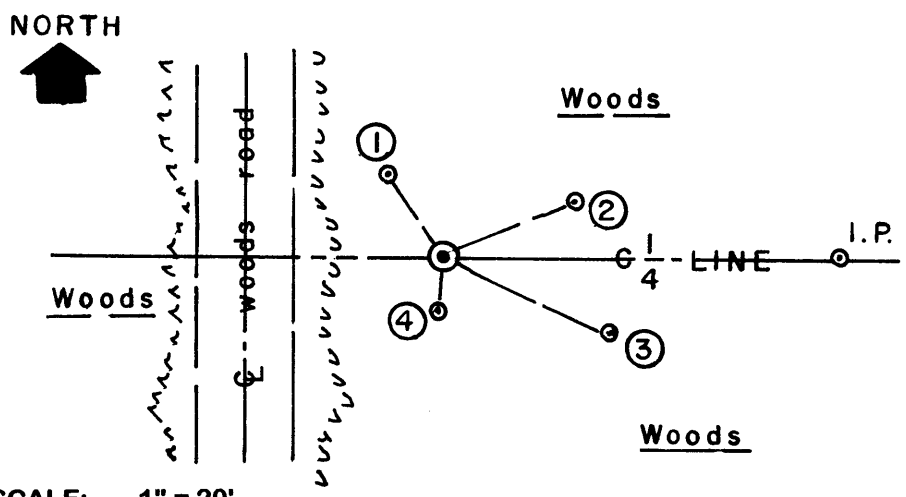
The Plat of Running Acres filed in Oneida County records, as approved by the State in November 1966, indicates a 1.5" iron pipe at this witness corner per plat as drafted by Stuart L. Foltz and certified by William S. Cameron, RLS 112.

In April 1984, Glen Barker/RLS 1682 indicates a 1.5" dia. iron pipe found at this Witness Corner, per legend on plat of survey filed as B-491 in Oneida County survey records, at a distance of 189.24' on C1/4 line West of the East 1/4 corner of Section 29 in Lake Nokomis.

In September 2003, Lester Schmit/RLS 1192 indicates a 1.5" iron pipe at this Witness MC per plat of survey filed as C-2004 in Oneida County survey records.

This recovery completed July 21, 2004; there were no direct witnesses.

Plan view map of monument location with bearing and distance ties to a minimum of four(4) described witness or reference monuments of concrete, natural stone, iron, live bearing trees or equivalent material. If applicable, also show a minimum of two(2) bearing and distance ties to any other monument found and not accepted; including the bearing and distance from the accepted monument.



- WITNESS MONUMENT TIES:**
- ① New 10" Mr BT N35°W 9.93'.
 - ② New 12" Pw BT N66°E 14.95'.
 - ③ Old 18" Pr BT S65°E 18.97' with face blazing shut but fissure scar plain.
 - ④ Old 16" Pr BT S04°W 5.40' with long face blaze open & scribed.
- I painted old BTs and flagged new BTs, monument & 'T' post blaze orange.
- I also found an older 1" dia. iron pipe at 41'+/- East per Plat of Survey C-2004.

SCALE: 1" = 20'
 Unless otherwise indicated, all bearing tree ties are to a .25" dia. by 2.5" long PK nail with a 1.25" dia. steel washer driven into unblazed right face and a .25" dia. by 2.5" long PK nail with a 2" dia. steel washer stamped BT is also driven into unblazed face of bearing tree at DBH; the basis for measured bearings is by compass to nearest degree and all tie distances are measured horizontal by steel tape corrected to nearest 1/100th feet at standard temperature of 68° F.

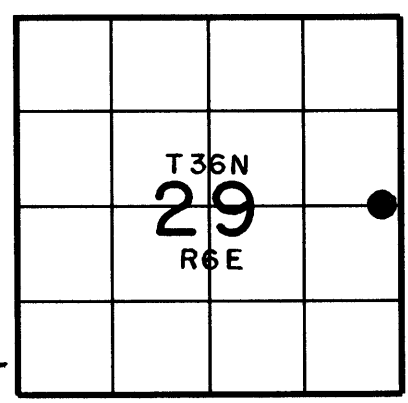
RLS SEAL:



LAND SURVEYOR CERTIFICATE:

I, William C. Rohde, hereby certify that I am duly licensed as a Professional Land Surveyor in the State of Wisconsin; that this USPLS monument location was determined by me and/or under my direct supervision and control; and that this U.S. Public Land Survey Monument Location Record is true and correct to the best of my knowledge and belief.

Signed: *William C. Rohde*
 William C. Rohde RLS 841



SECTION LOCATION MAP INDEX NO. T 8-9

Date Signed: September 4, 2004

3606292002