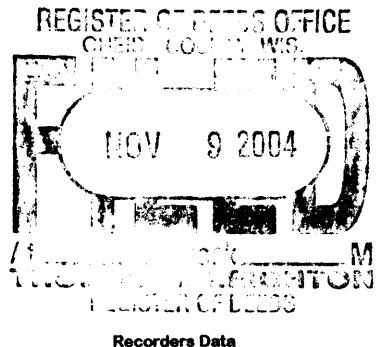


This form is intended to fulfill the requirements of Chapter A-E7.08 (3)(a) thru (i) U.S. Public Land Survey Monument Location Record, Wisconsin Administrative Code. Use the reverse side of form for continuation.



U.S. PUBLIC LAND SURVEY MONUMENT LOCATION RECORD

USPLS CORNER: NORTH WITNESS MC SECTION: 28 TOWNSHIP: 36 NORTH RANGE: 6 EAST
 NAME OF WATERWAY FOR M.C. CORNER : LAKE NOKOMIS SECTION LINE: WEST
 (CITY)(VILLAGE)(TOWN) OF: NOKOMIS COUNTY OF: ONEIDA

Description of monument found or placed and all other evidence used as the basis for monument location; including monuments and measurements required if the corner location was reestablished by lost corner proportionate methods. Also indicate name of the original surveyor, original survey date and the corner monument, bearing trees, witness or other reference monuments established, including measured bearing and distance ties, from available survey records.

Found an older record 2" dia. iron pipe undisturbed with uncapped top 2" above grade at this corner. I carefully removed the older 30" long iron pipe and drove a standard 2" dia. by 30" long aluminum pipe monument with stamped Oneida County cap 1" above grade into the plumb soil cavity left by the old iron pipe. Corner falls on a steep slope down about 25' East to vegetated lake shoreline, also being the West/Right bank of the Tomahawk River. I also found an old 1" by 2.5" white wood yellow top marker stake stenciled with faint '15' on side nearby. I left older 2" iron pipe flat on grade nearby. This corner is also readily accessible at the SE corner of improved lake lot at Fire #2397 Smokey Drive.

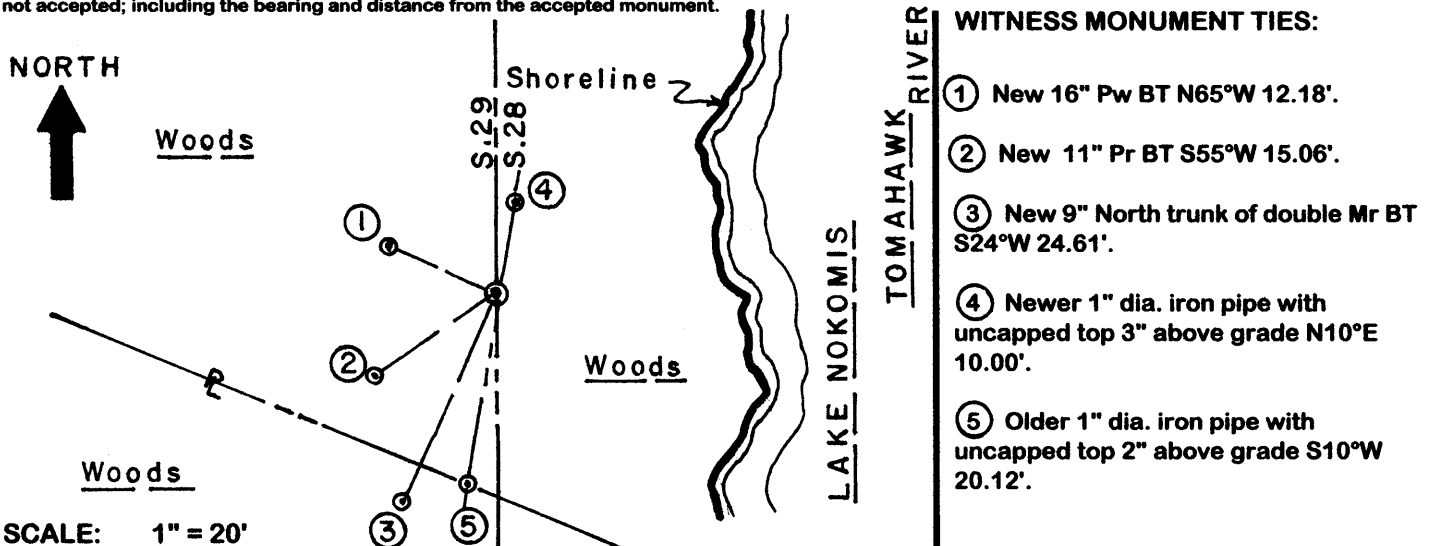
In October 1862, Joseph H. Jenkins/GLO did not set a wood post at this corner nor mark OBTs as Lake Nokomis was not impounded by damming until afterwards.

In November 1978, James F. Kasson/RLS 1416 notes a 2" dia. iron pipe found at this corner per County Plat of Pine Bluff filed in Oneida County records.

In June/August 1992, Lester Schmit/RLS 1192 indicates a 2" iron pipe at this corner per legend on Plat of Survey filed as B-2642 in Oneida County survey records.

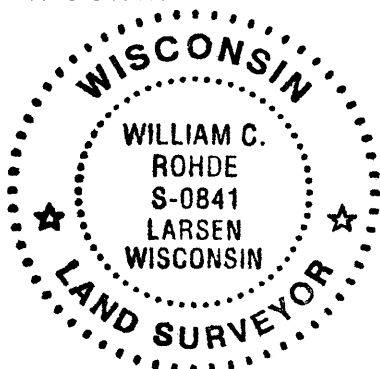
I set a standard white poly 'T' marker post 9" South of corner monument and flagged monuments, T post and all BTs with blaze orange tape. This recovery completed September 8, 2004; there were no direct witnesses.

Plan view map of monument location with bearing and distance ties to a minimum of four(4) described witness or reference monuments of concrete, natural stone, iron, live bearing trees or equivalent material. If applicable, also show a minimum of two(2) bearing and distance ties to any other monument found and not accepted; including the bearing and distance from the accepted monument.



Unless otherwise indicated, all bearing tree ties are to a .25" dia. by 2.5" long PK nail with a 1.25" dia. steel washer driven into unblazed right face and a .25" dia. by 2.5" long PK nail with a 2" dia. steel washer stamped BT is also driven into unblazed face of bearing tree at DBH; the basis for measured bearings is by compass to nearest degree and all tie distances are measured horizontal by steel tape corrected to nearest 1/100th feet at standard temperature of 68° F.

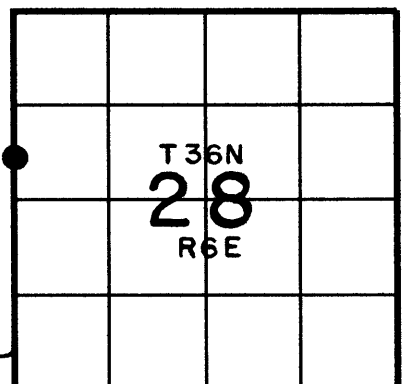
RLS SEAL:



LAND SURVEYOR CERTIFICATE:

I, William C. Rohde, hereby certify that I am duly licensed as a Professional Land Surveyor in the State of Wisconsin; that this USPLS monument location was determined by me and/or under my direct supervision and control; and that this U.S. Public Land Survey Monument Location Record is true and correct to the best of my knowledge and belief.

Signed: *William C. Rohde*
 William C. Rohde RLS 841



JUN 12 2023

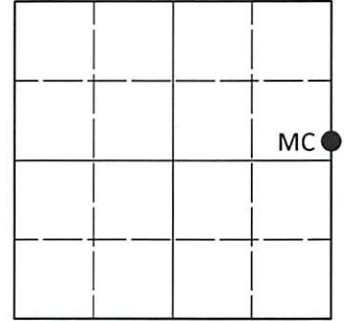
KYLE J. FRANSON
REGISTER OF DEEDS

U.S. PUBLIC LAND SURVEY MONUMENT RECORD

Note: This form is intended and designed to fulfill all requirements of Wisconsin Administrative Code, Chapter A-E 7.08 U.S. Public Land Survey Monument Record (3)(a-i).

(a) CORNER LOCATION
Meander Cor. of Secs. 28 & 29
Township 36 North
Range 6 East of the 4th P.M.
Town of Nokomis
County of Oneida

WISCRS - Oneida County
N: 143,136.67 USft
E: 175,886.16 USft
Datum: NAD 83(2011) ep. 2010.00
GNSS Method: RTN - Offset
GNSS Control: WISCORS VRS



Sec. 29, T. 36 N., R. 6 E.

(b)(f)(g)(h) Description of monument found at this corner and if it was accepted, state all evidence (material, testimonial, occupational, plats, records, other monuments) used as a basis for accepting. If not accepted or if nothing was found, state evidence used as basis for establishing location. If re-established through lost corner proportionate methods, indicate all monuments, distances and directions used to establish. Indicate type of monument and sign post found or set.

This record is a perpetuation of the following land corner document(s):

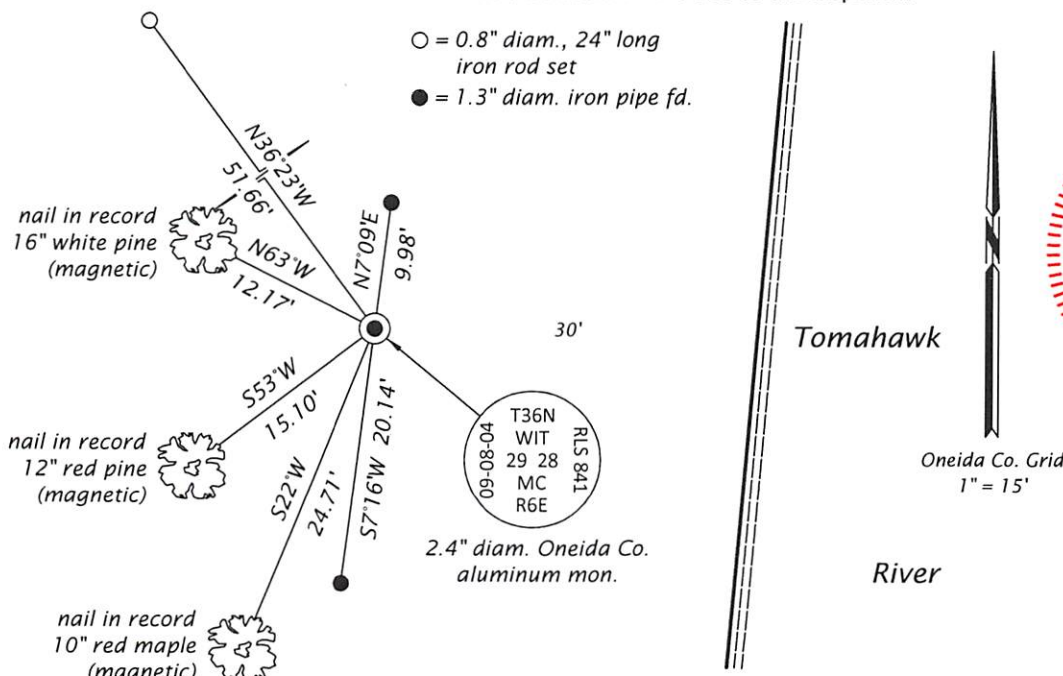
October 31, 2004: USPLS Monument Record by William C. Rohde, filed in Oneida County

A complete history of the corner can be found on the previous land corner document(s). I accept the record activity as a true and faithful perpetuation or reestablishment of the original corner location and further perpetuate it as described below.

May 15, 2023: I found and accepted the record monument, a 2.4" diam. aluminum pipe, firmly set, with a 3.3" diam. Oneida Co. aluminum cap flush with the ground surface. I found or established accessories as indicated below. I found a white vinyl sign post bearing South, 0.9 ft.

The coordinate value shown has been determined by traversing from two or more GNSS offset points satisfying the accuracy requirements defined and qualified in the 2022 Oneida County Fee Schedule for USPLS Corners.

(c)(d)(e) Plan view of corner with ties to at least 4 witness monuments. If in disagreement with previously established corner, show the distances between the two corners and also indicate the ties to the disputed.



(i) I, Jeffrey W. Austin, Professional Land Surveyor No. S-1885, hereby certify that the corner location on this record was determined by me or under my direction and control and that this U.S. Public Land Survey Monument Record is correct and complete to the best of my knowledge and belief.

[Handwritten Signature]
Signature

JUNE 1, 2023
Date