

CERTIFIED LAND CORNER RESTORATION

Index No. S-8

State of Wisconsin

County of Oneida } ss.

I Glen Barker

do hereby certify that on the 2nd day

of established February 19 84, I have

renewed the NE 1/16 Section 29

corner of Township 36 North, Range

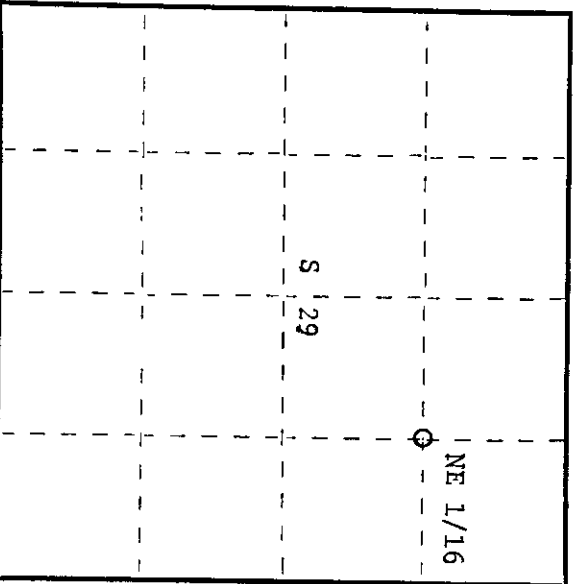
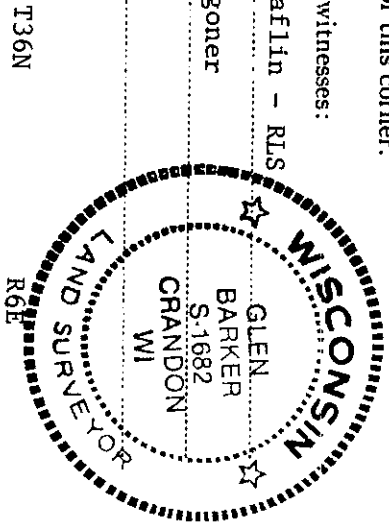
of East Fourth Principal Meridian,

as described hereon; and that from this evidence I established a new monument and accessories as described hereon to perpetuate the original location of this corner.

Resident witnesses:

J. Claflin - RLS

H. Wagoner



○ = Corner monument restored.

History of original corner establishment:

No evidence of any previous corner.

Description of corner evidence found:

Corner established by subdivision of the NE 1/4. NE 1/16 sets 1270.80' of NC 1/16 and 1338.40' of EC 1/16.

Description of monument and accessories I established to perpetuate the original location of this corner.

Set a 1" iron pipe with 2" diameter alloy cap stamped:

Monument projects 18" above ground.

Marked NBTs:

Jack pine 6" N12E 21.50'  
 Jack pine 5" S25E 32.76'  
 Scribed 1/16 - B.T.

NE 1/16 S 29

S1682  
 T36N R6E

CPI - 1984

Dated at Rhinelander, Wis., this 19th day of April, 1984

Signature: *Glen Barker* Title: Registered Land Surveyor Registration No. 1682  
 (County Surveyor, Registered Land Surveyor, or other duly authorized official)

Office of Register of Deeds, County of Oneida, I hereby certify that the within instrument was filed in this office for record on the 23rd day of May, 1984 at 11:08 o'clock A.M.

*Angie Neavage Kuehn*  
 (Register of Deeds)

By: Deputy

3606293010