

CERTIFIED LAND CORNER RESTORATION

Index No. 1-4

State of Wisconsin }  
 County of Oneida } ss.

History of original corner establishment:  
 No evidence of any previous corner.

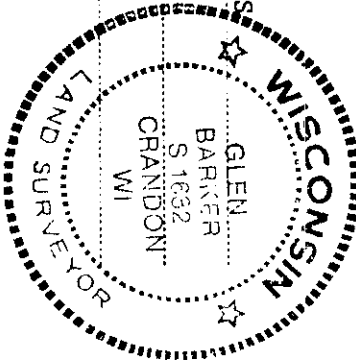
I Glen Barker, do hereby certify that on the 7th day of December, 1983, I ~~found~~ re-established the E. 1/16 corner of Sections 30 & 31 Township 36, North, Range 6 East, Fourth Principal Meridian, as described hereon; and that from this evidence I established a new monument and accessories as described hereon to perpetuate the original location of this corner.

Description of corner evidence found:  
 Total distance from section corner 29-30-31-32 to previously established 1/4 corner between Sections 30 & 31 is 2660.74'.  
 Set E 1/16 1330.37' intermediate.

Resident witnesses:

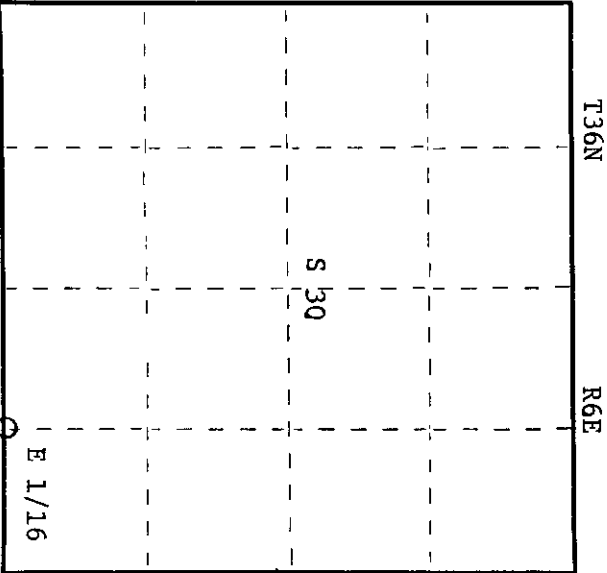
J. Clafin - RLS

H. Wagoner



Description of monument and accessories I established to perpetuate the original location of this corner.  
 Set a railroad spike in east end of bridge on C.T.H. "Y" for E 1/16 corner.  
 Marked NBTs"

- Spruce 8" S28E 36.15'
- Spruce 4" S46W 60.31'
- Ties to bridge
- Inside corner S.W. bunkment 15.44'
- Inside corner N.W. bunkment 19.80'



○ = Corner monument restored.

Dated at Rhineland, Wis., this 13th day of February, 1984.

Signature Glen Barker Title Registered Land Surveyor Registration No. SL682  
 (County Surveyor, Registered Land Surveyor, or other duly authorized official)

Office of Register of Deeds, County of Oneida. I hereby certify that the within instrument was filed in this office for record on the 23rd day of May, 1984 at 11:00 o'clock A. M.

Donna George Kuehn  
 (Register of Deeds)

By: \_\_\_\_\_ Deputy

# U.S. PUBLIC LAND SURVEY MONUMENT RECORD

Note: This form is intended and designed to fulfill all requirements of Wisconsin Administrative Code, Chapter A-E 7.08 U.S. Public Land Survey Monument Record (3) (a) (b) (c) (d) (e) (f) (g) (h) (i). An additional sheet may be added if necessary to conform with said requirements.

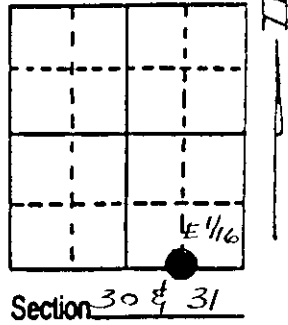
(a) Corner location: Township 36 North

Range 6 East/West

Town/Village NOKOMIS

County ONEIDA

Cor 10  
43606300010

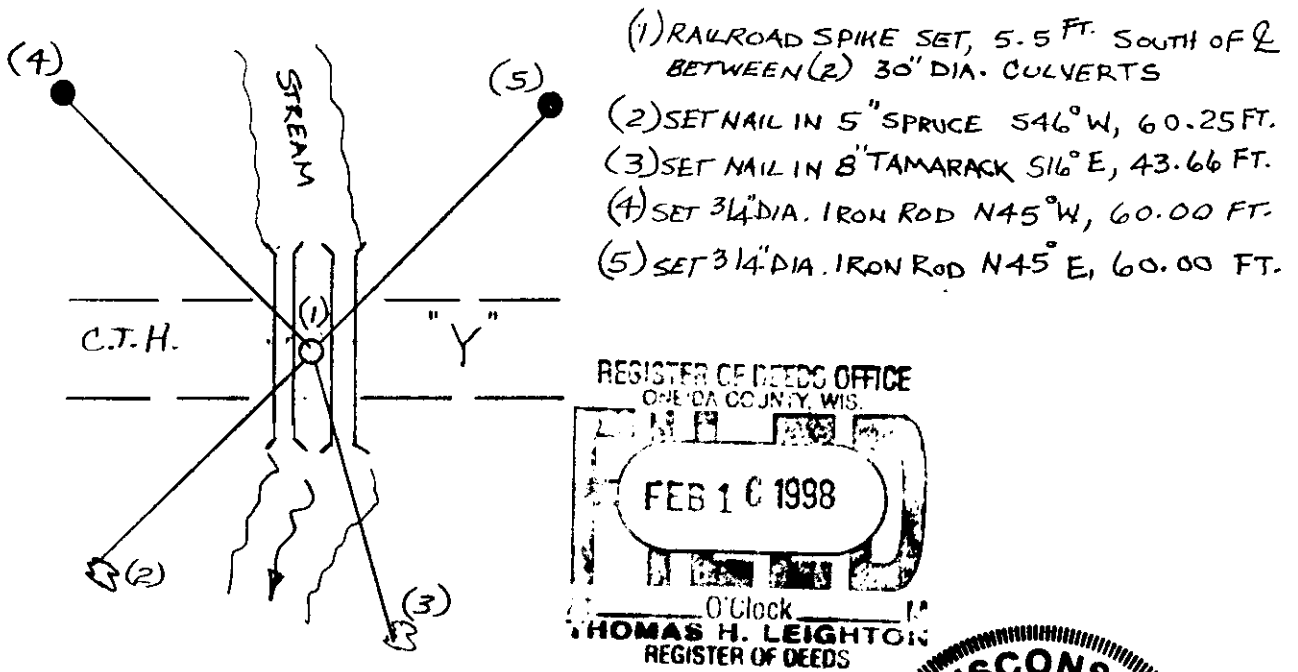


(b) (f) (g) (h) Description of monument found at this corner and if it was accepted, state all evidence (material, testimonial, occupational, plats, records, other monuments) used as a basis for accepting. If not accepted or if nothing was found, state evidence used as basis for establishing location. If reestablished through lost corner proportionate methods, indicate all monuments, distances and directions used to establish. Indicate type of monument found or set and sign post.

RAILROAD SPIKE FOUND, SET BY GLEN BARKER 5-1682 IN 1983  
 SPRUCE 4" S46°W 60.31 FT.  
 INSIDE CORNER S.W. BRIDGE BUNKMENT 15.44 FT.  
 INSIDE CORNER N.W. BRIDGE BUNKMENT 19.80 FT.

This corner was referenced out in advance of road construction as an act of preserving survey evidence. This corner has not been tested for its accuracy during the course of this preservation and it is recommended that the corner be evaluated for its validity by those using it.

(c) (d) (e) Plan view of corner with ties to at least 4 witness monuments. If in disagreement with previously established corner, show the distances between the two corners and also indicate the ties to the disputed corner. AFTER ROAD CONST. AND BRIDGE REPLACED WITH (2) 30" DIA. CULVERTS



(i) I, DENNIS B. ROBERTS  
 (type or print name) certify that the corner location on this record was determined by me or under my direction and control and that this U.S. Public Land Survey Monument Record is correct and complete to the best of my knowledge and belief.

Dennis B. Roberts 12-03-97  
 Signature Date



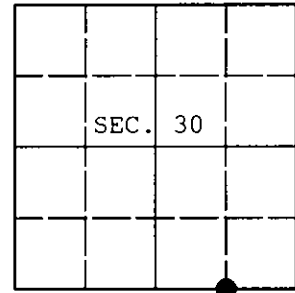
Index No. V 14

Stamp 3666300010

**U.S. PUBLIC LAND SURVEY MONUMENT RECORD**

Note: This form is intended and designed to fulfill all requirements of Wisconsin Administrative Code, Chapter A-E 7.08 U.S. Public Land Survey Monument Record (3) (a) (b) (c) (d) (e) (f) (g) (h) (i). An additional sheet may be added if necessary to conform with said requirements.

(a) CORNER LOCATION: WISCORS - Oneida County  
 E 1/16 Cor. of Secs. 30 & 31 N: 140,102.19 USft  
 Township 36 North E: 169,390.21 USft  
 Range 6 East of the 4th P.M. Datum: NAD 1983(2011)  
 Town of Nokomis County of Oneida



(b) HISTORY OF ORIGINAL CORNER ESTABLISHMENT

Original Surveyor: \_\_\_\_\_ Original Accessories: \_\_\_\_\_  
 Date of Survey: Commenced: \_\_\_\_\_  
 Completed: \_\_\_\_\_

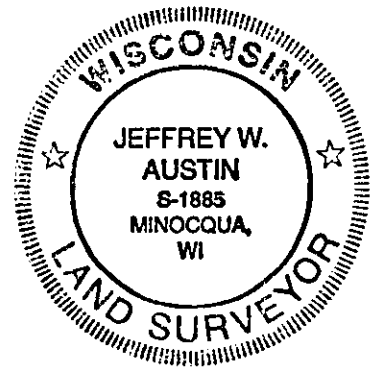
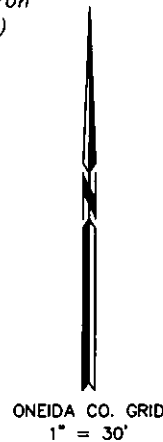
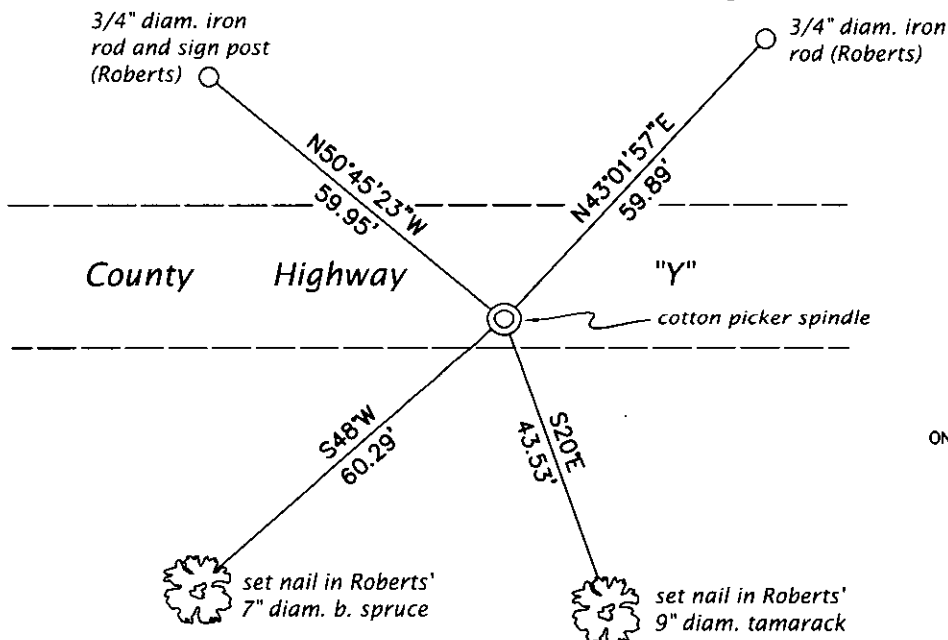
(b) (f) (g) (h) Description of monument found at this corner and if it was accepted, state all evidence (material, testimonial, occupational, plats, records, other monuments) used as a basis for accepting. If not accepted or if nothing was found, state evidence used as basis for establishing location. If re-established through lost corner proportionate methods, indicate all monuments, distances and directions used to establish. Indicate type of monument and sign post found or set.

*This is a perpetuation of a previous USPLS Monument Record by Dennis B. Roberts, RLS dated December 3, 1997 and filed in the office of the Oneida County Register of Deeds. A complete history of the corner can be found on the previous monument record. I accept the previous location as a true and faithful perpetuation or reestablishment of the original corner location and further perpetuate it as follows.*

June 27, 2013: Prior to road construction, I found and accepted the record monument, a railroad spike 7 ft. South of the centerline of County Highway Y. I performed a GPS observation referenced to the WISCORS GNSS Network. I found or established accessories as shown below.

August 8, 2015: Following road construction, I returned and set a cotton picker spindle at the corner point from the reference monuments established previously. I performed a second GPS observation referenced to the WISCORS GNSS Network. The coordinates shown are the mean of the two observations that differed by 0.05 ft.

(c) (d) (e) Plan view of corner with ties to at least 4 witness monuments. If in disagreement with previously established corner, show the distances between the two corners and also indicate the ties to the disputed.



REGISTER OF DEEDS OFFICE  
 ONEIDA COUNTY  
 FILED

OCT 15 2015

AT \_\_\_\_\_ O'CLOCK \_\_\_\_\_ M  
 KYLE J. FRANSON  
 REGISTER OF DEEDS

(i) I, Jeffrey W. Austin, Professional Land Surveyor No. S-1885, hereby certify that the corner location on this record was determined by me or under my direction and control and that this U.S. Public Land Survey Monument Record is correct and complete to the best of my knowledge and belief.

Signature

OCT. 11, 2015  
 Date