

**U.S. PUBLIC LAND SURVEY MONUMENT LOCATION RECORD**

Recorders Data

CORNER: West 1/4 SECTION: 33 TOWNSHIP 36 NORTH RANGE 6 EAST/WEST

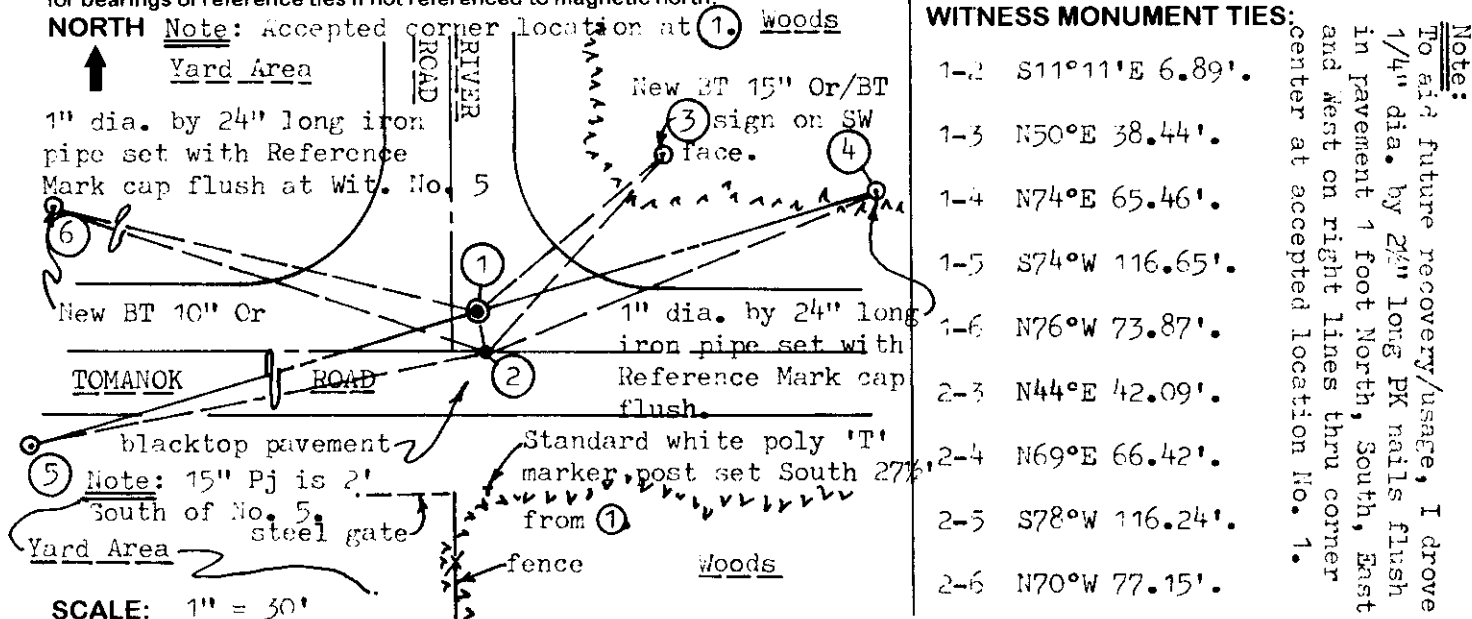
FOR M.C. CORNER INDICATE: NAME OF WATERWAY N/A SECTION LINE N/A

(CITY)(VILLAGE)(TOWN) OF: Nokomis COUNTY OF: Oneida

Description of monument found or placed and all other evidence used as a basis for monument location; including all monuments and related measurements required if the corner location is reestablished by lost corner proportionate methods. Also indicate name of original surveyor, survey date, corner monument set and established bearing trees, witness or reference monuments with ties from available records.

Found and accepted an old undisturbed 1 1/4" dia. iron pipe with uncapped top 3/8" below the existing blacktop pavement surface at location No. 1 below; I set a 1/4" x 2 1/2" long PK nail in top center of the iron pipe, and confirmed location by record measurement with EDM to NW corner of Section 33 I had previously recovered on June 3, 1998, as I also found a 3/4" dia. bolt with square nut at top 4 1/8" below pavement surface at location No. 2 below and of unknown origin or record. In 1862, Jenkins/GLO set a wood post as the original corner and marked BTs, a 24" Py OBT S43°E 5 lks and a 20" Py OBT S38°W 64 lks, which are all now gone. In 1962, Wincentzen indicated a "1/4 I.P." in road at this corner per his Plat of Survey, filed as No. B-680, in Oneida County survey records. In 1971, a Plat of Survey by Lembcke in Oneida County survey records, indicates a monument(found in place) at 1/4 corner but I could not confirm location by reference. In 1989, a Plat of Survey by Schmit, filed as No. B-3381 in Oneida County survey records, indicates that he found and accepted a 1" dia. iron pipe at this corner by legend reference, and had measured 2645.43' along the West line of Section 33 to the NW section corner thereof, which checked within 0.10' by my EDM measure. In 1996, Lemke also used the iron pipe at this corner per his Certified Survey Map No. 1854 recorded in Oneida County records, as his measurement to NW section corner of Section 33 is also within 0.10' of Schmit and my distances. I have shown reference ties to both monuments in roadway for clarification purposes. This recovery was completed June 15, 1998; there were no witnesses, other than vehicle drive-bys.

Plan view map of monument location with bearing and distance ties to a minimum of four(4) described witness or reference monuments of concrete, natural stone, iron, live bearing trees or equivalent material. If applicable, also show a minimum of two(2) bearing and distance ties to any other monument found and not accepted; including the bearing and distance from the accepted monument. Indicate the basis for bearings of reference ties if not referenced to magnetic north.



Unless otherwise indicated, all bearing tree ties are to a .25" dia. by 2.5" long PK nail with a 1.25" dia. steel washer driven into unblazed right face and a .25" dia. by 2.5" long PK nail with a 2" dia. steel washer stamped 'BT' is also driven into unblazed face of bearing tree at DBH; the basis for measured bearings is magnetic to nearest degree and all tie distances are horizontal measure to nearest 1/100th feet.

**LAND SURVEYOR CERTIFICATION:**

I, William C. Rohde, hereby certify that I am a duly licensed Professional Land Surveyor in Wisconsin, that this USPLS monument location was determined by me or under my direction and control, and that this U.S. Public Land Survey Monument Location Record is true and correct to the best of my knowledge and belief.

*William C. Rohde* Date: 6-17-98  
Signature



RLS SEAL

SHEET NO. 1 OF 1

		33	

SECTION LOCATION MAP

INDEX NO. X 9  
3606 322000

INDEX NO.

This form is intended to fulfill requirements of Chapter A-E 7.08 (3)(a)(b)(c)(d)(e)(f)(g)(h)(i) U.S. Public Land Survey Monument Location Record, Wisconsin Administrative Code. Use reverse side for geodetic location data and/or continuation purposes.