

CERTIFIED LAND CORNER RESTORATION

Index No. Z-17
SE Cor. 34-36-6
From Lincoln Cty Files

State of Wisconsin }
County of Lincoln } ss.

I Lester J. Schmit, do hereby certify that on the 31st day of December, 19 75, I found evidence of the Northeast corner of Section 3 Township 35, North, Range 6 East, Fourth, Principal Meridian, as described hereon; and that from this evidence I established a new monument and accessories as described hereon to perpetuate the original location of this corner.

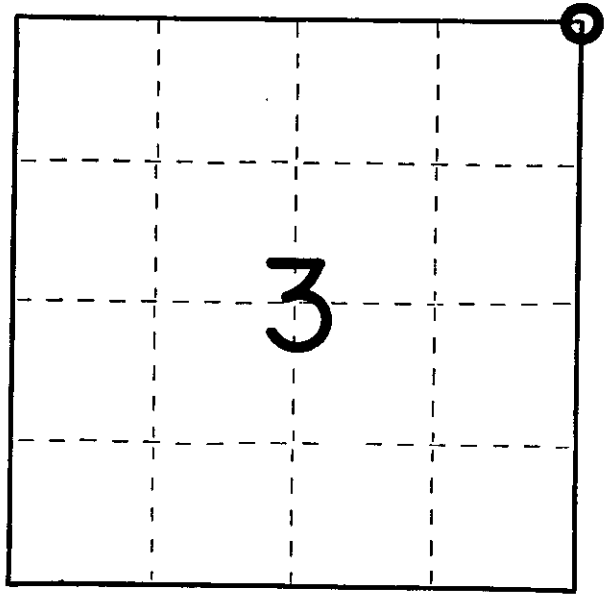
Resident witnesses:

History of original corner establishment:
Surveyor: Alfred Willard
Date: 31 August 1860
Monumentation: Wood Post
Witnesses: Yellow Pine 16; N 10° E; 98 links
Yellow Pine 16; S 40° E; 65 links
No others near.

Description of corner evidence found:
2" x 30" Iron Pipe, 1" above surface of ground and 11.6' West of centerline of railroad tracks.
Witnesses: 16" Oak; N 46° W; 47.70'
19" Norway Pine; S 32° W; 92.70'

Description of monument and accessories I established to perpetuate the original location of this corner.
Berntsen Monument - 30" (Set 1" above surface of ground)
Placed 2" x 30" Iron Pipe adjacent to Berntsen Monument, with top of said Iron Pipe 9" below surface of ground. Berntsen Monument is Northeast corner of Section 3.

Witnesses: P.K. Nail in 5" Oak; N 70° E; 37.04'
P.K. Nail in 15" Jack Pine; S 15° E; 153.28'



○ = Corner monument restored.

Dated at Rhineland, Wis., this 5th day of February, 19 76

Signature Lester J. Schmit Title Land Surveyor Registration No. S-1192
(County Surveyor, Registered Land Surveyor, or other duly authorized official)

Office of Register of Deeds, County of _____, I hereby certify that the within instrument was filed in this office for record on the _____ day of _____, 19 _____ at _____ o'clock _____ M.

(Register of Deeds)

By _____ Deputy

3606340000

MAY 01 2023

KYLE J. FRANSON
REGISTER OF DEEDS

U.S. PUBLIC LAND SURVEY MONUMENT RECORD

Note: This form is intended and designed to fulfill all requirements of the Wisconsin Administrative Code, Chapter A-E 7.08 U.S. Public Land Monument Record (3)(a)(b)(c)(d)(e)(f)(g)(h)(i). An additional sheet may be added if necessary to conform with said requirements.

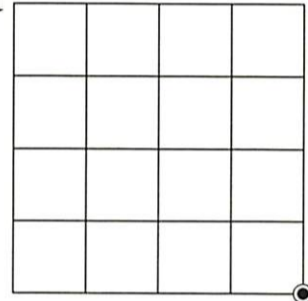
(a) CORNER LOCATION:

Southeast Corner of Section 34
Township 36 North
Range 6 East
Town of Nokomis
County of Oneida

North:
East:
Datum:
GNSS Method:
GNSS Control:

(RECORDING AREA)

SECTION 34



(b) HISTORY OF ORIGINAL CORNER ESTABLISHMENT

Original Surveyor:
Date of Survey: Commenced
Completed
Original B.T.'S

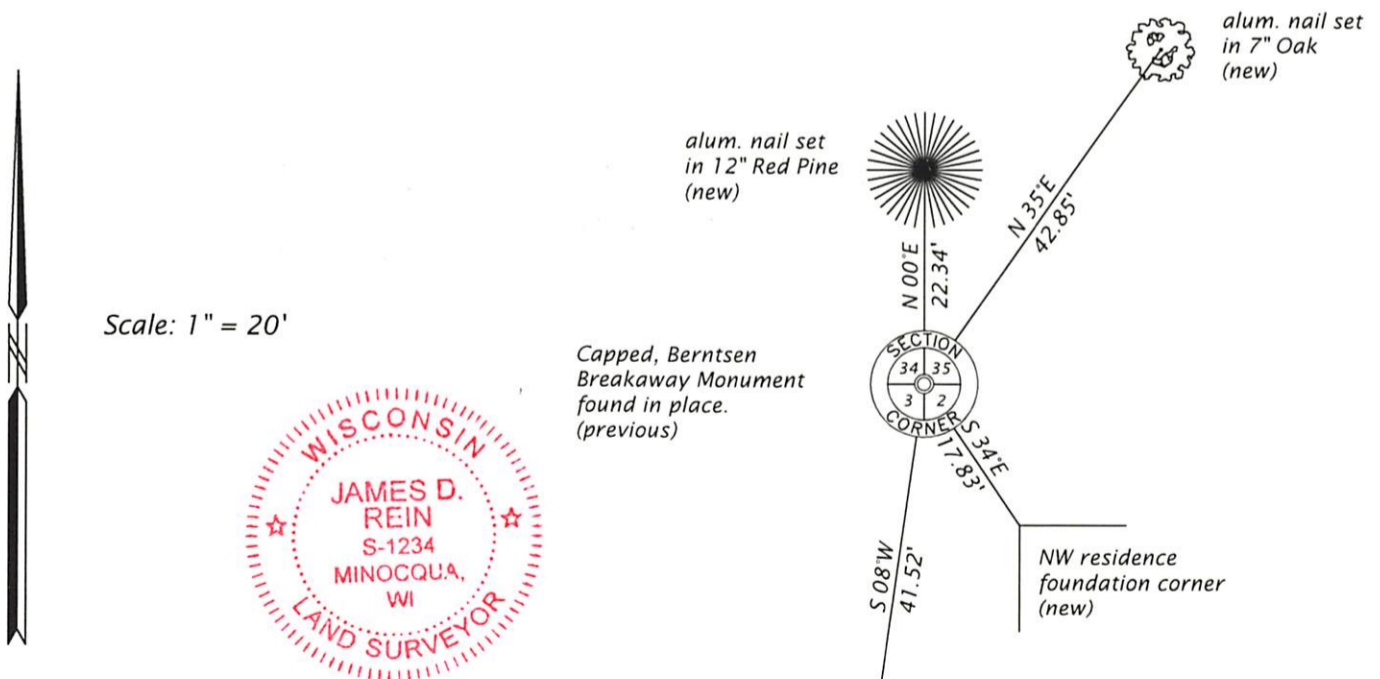
SEE PREVIOUS U.S.P.L.S. MONUMENT
RECORD DATED FEBRUARY 5, 1976

(f)(g)(h) DESCRIPTION OF MONUMENT FOUND AT THIS CORNER AND IF IT WAS ACCEPTED, STATE ALL EVIDENCE (MATERIAL, TESTIMONIAL, OCCUPATIONAL, PLATS, RECORD, OTHER MONUMENTS) USED AS A BASIS FOR ESTABLISHING LOCATION. IF NOT ACCEPTED OR IF NOTHING WAS FOUND, STATE EVIDENCE USED AS BASIS FOR ESTABLISHING LOCATION. IF REESTABLISHED THROUGH LOST CORNER PROPORTIONATE METHODS, INDICATE ALL MONUMENTS, DISTANCES AND DIRECTIONS USED TO ESTABLISH. INDICATE TYPE OF MONUMENT AND SIGN POST FOUND OR SET.

This is a perpetuation of a previous U.S.P.L.S. Monument Record by Lester J. Schmit, RLS S-1192, dated February 5, 1976 and filed in the office of the Oneida County Register of Deeds. A complete history of the corner can be found on the previous monument record. I accept the previous location as a true and faithful perpetuation or reestablishment of the original corner location and further perpetuate it as follows.

November 10, 2022, James D. Rein, PLS No. S-1234, we found and I accepted the Berntsen Breakaway Monument. All of Lester Schmit's bearing trees are now gone. See below for updated ties to three new bearing trees and a building foundation corner.

(c)(d)(e) PLAN VIEW OF CORNER WITH TIES TO AT LEAST 4 WITNESS MONUMENTS. IF IN DISAGREEMENT WITH PREVIOUSLY ESTABLISHED CORNER, SHOW THE DISTANCE BETWEEN THE TWO CORNERS AND ALSO INDICATE THE TIES TO THE DISPUTED CORNER.



(i) I, JAMES D. REIN, PROFESSIONAL LAND SURVEYOR NO. S-1234 HEREBY CERTIFY THAT THE CORNER LOCATION ON THIS RECORD WAS DETERMINED BY ME OR UNDER MY DIRECTION AND CONTROL AND THAT THIS U.S. PUBLIC LAND SURVEY MONUMENT RECORD IS CORRECT AND COMPLETE TO THE BEST OF MY KNOWLEDGE AND BELIEF.

James D. Rein 1-19-23
SIGNATURE DATE

INDEX NO. Z-17
3606340000