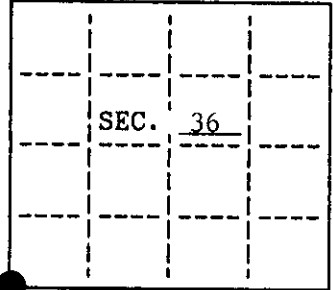


U. S. PUBLIC LAND SURVEY MONUMENT RECORD

Note: This form is intended and designed to fulfill all requirements of Wisconsin Administrative Code, Chapter A-E 7.08 U.S. Public Land Survey Monument Record (3)(a)(b)(c)(d)(e)(f)(g)(h)(i). An additional sheet may be added if necessary to conform with said requirements.

(a) CORNER LOCATION: State Plane Coordinates
 SW corner of Sec. 36 X _____
 Township 36 North Y _____
 Range 6 East Datum Base _____
 Town/City Nokomis County of Oneida



(b) HISTORY OF ORIGINAL CORNER ESTABLISHMENT

Original Surveyor: Alfred Millard
 Date of Survey: Commenced September, 1860
 Completed September, 1860

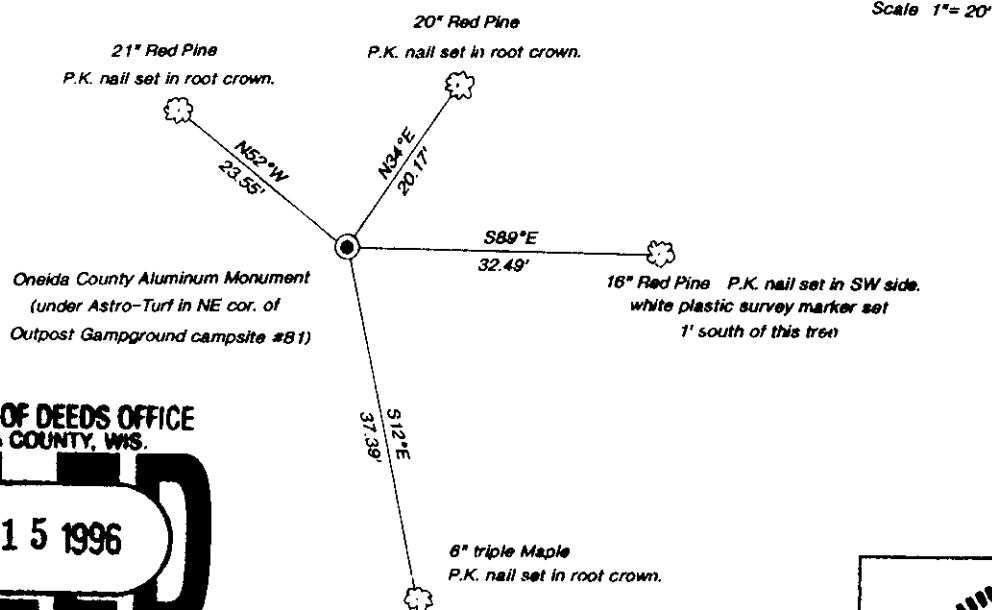
Original B.T.'s

- 24" white Pine, N42 E, 5 lks
- 24" White Pine, S85 E, 40 lks
- 12" Yellow Birch, S48 W, 16 lks
- 10" Hemlock, N45 W, 35 lks

(b)(f)(g)(h) Description of monument found at this corner and if it was accepted, state all evidence (material, testimonial, occupational, plats, records, other monuments) used as a basis for accepting. If not accepted or if nothing was found, state evidence used as basis for establishing location. If reestablished through lost corner proportionate methods, indicate all monuments, distances and directions used to establish. Indicate type of monument and sign post found or set.

- Sept., 1860 - Alfred Millard set post and made four bearing trees.
- Feb., 1960 - F.R. Wincentsen (Genisot Engineering) shows I. bolt at section corner with three bearing trees - 20" Y. Pine; N88°E 59.8', 15" Y. Pine; N33°45'E, 20.3' and a 13" W. Pine; S60°30'E, 34.5'. He also has a witness corner N84°13'E, 2868.18' with two bearing trees - 6" J. Pine; N10°W, 43.0' and a 5" J. Pine; N64°30'E, 71.0'.
- Oct., 1972 - Northwoods Surveyors found a 1" I.P. w/I. rod with two bearing trees - 18" N. Pine; N31°E, 20.1' and a 20" W. Pine S57°E, 34.3'. They also tied a witness corner S89°46'E, 2867.40'. Witness corner has two bearing trees 6" J. Pine, N10°W, 43.0' and 5" J. Pine, N64°E, 71.0'.
- Sept., 1996 - I found a 1 1/4" (o.d.) I. pipe with a previous bearing tree N34°E, 20.17' to a P.K. nail I set in the root crown. This matches Wincentsen and Northwoods. I also tied the witness corner N89°46'00"W, 2867.70'. I replaced 1 1/4" iron pipe with an Oneida County Aluminum Monument.

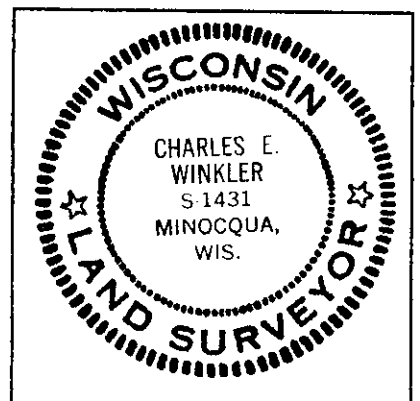
(c)(d)(e) Plan view of corner with ties to at least 4 witness monuments. If in disagreement with previously established corner, show the distances between the two corners and also indicate the ties to the disputed.



REGISTER OF DEEDS OFFICE
ONEIDA COUNTY, WIS.
FILED
NOV 15 1996
 At O'Clock M
THOMAS H. LEIGHTON
 REGISTER OF DEEDS

(i) I, Charles E. Winkler S-1431 hereby certify that the corner location on this record was determined by me or under my direction and control and that this U.S. Public Land Survey Monument Record is correct and complete to the best of my knowledge and belief.

Charles E. Winkler 10/14/96
 Signature Foltz & Associates, Inc, Date



INDEX NO. Z-21



Stock No. 26273

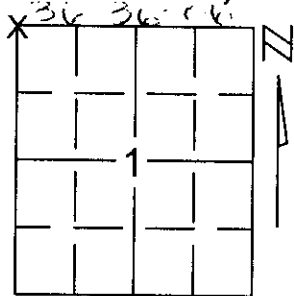
U.S. PUBLIC LAND SURVEY MONUMENT RECORD

Note: This form is intended and designed to fulfill all requirements of Wisconsin Administrative Code, Chapter A-E 5.02, U.S. Public Land Survey Monument Record (3)(a)(b)(c)(d)(e)(f)(g)(h)(i). An additional sheet may be added if necessary to conform with said requirements.

(a) Corner location: Township 35 North
Range 6 East

Town/City/Village BRADLEY

County LINCOLN



Section 1

(b)(f)(g)(h) Description of monument found at this corner and if it was accepted, state all evidence (material, testimonial, occupational, plats, records, other monuments) used as a basis for accepting. If not accepted or if nothing was found, state evidence used as basis for establishing location. If reestablished through lost corner proportionate methods, indicate all monuments, distances and directions used to establish.

SEPT., 1860 - ALFRED MILLARD SET POST AND ESTABLISHED FOUR BEARING TREES.

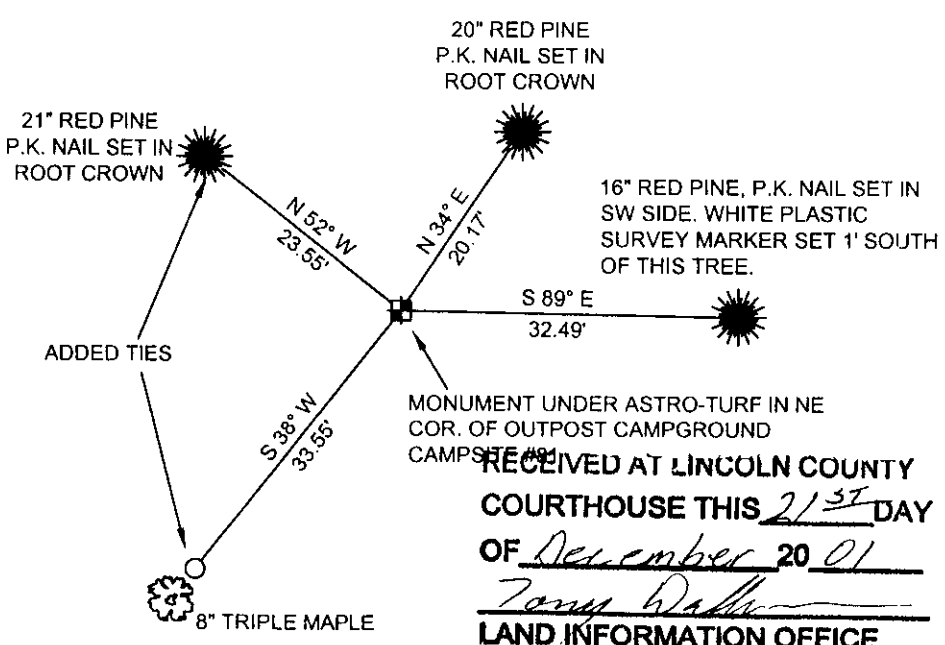
FEB., 1960 - F.R. WINCENTSEN (GENISOT ENG.) SHOWS I-BOLT AT SECTION CORNER WITH THREE BEARING TREES, 20" Y.PINE; N88°E, 59.8', 15" Y.PINE; N33°45'E, 20.3' AND A 13" W.PINE; S60°30'E, 34.5'. HE ALSO ESTABLISHED A WITNESS CORNER N84°13'E, 2868.18' WITH TWO BEARING TREES - 6" JACK PINE; N10°W, 43.0' AND A 5" JACK PINE; N64°30'E, 71.0'.

OCT., 1972 - NORTHWOODS SURVEYORS FOUND A 1" I.P. W/ IRON ROD WITH TWO BEARING TREES - 18" NORWAY PINE; N31°E, 20.1' AND A 20" WHITE PINE S57°E, 34.3'. THEY ALSO TIED A WITNESS CORNER S89°46'E, 2867.40'. WITNESS CORNER HAS TWO BEARING TREES 6" JACK PINE, N10°W, 43.0' AND 5" JACK PINE, N64°E, 71.0'.

SEPT. 1996 - CHARLES E. WINKLER FOUND A 1-1/4" (O.D.) IRON PIPE WITH A PREVIOUS BEARING TREE N34°E, 20.17' TO A P.K. NAIL SET IN THE ROOT CROWN. THIS MATCHES WINCENTSEN AND NORTHWOODS. HE TIED THE WITNESS CORNER N89°46'00"W, 2867.70'. REPLACED 1-1/4" IRON PIPE WITH A ONEIDA COUNTY ALUMINUM MONUMENT.

DEC. 2001 - REI FOUND ONEIDA COUNTY MONUMENT. ACCEPTED AS TRUE CORNER LOCATION. ADDED TWO TIES TO PERPETUATE CORNER LOCATION.

(c)(d)(e) Plan view of corner with ties to at least 4 witness monuments. If in disagreement with previously established corner, show the distances between the two corners and also indicate the ties to the disputed corner.



COORDINATES ARE REFERENCED TO THE LINCOLN COUNTY COORDINATE SYSTEM AS DEVELOPED BY THE WISCONSIN DEPARTMENT OF TRANSPORTATION AND WERE DETERMINED BY GPS OBSERVATIONS ON CONTROL POINTS AS SUPPLIED BY LINCOLN COUNTY.

BEARINGS ARE REFERENCED TO MAGNETIC NORTH.

○ - SET 3/4" x 30" REBAR W/ ALUM. CAP

⊕ - NW1/4 CORNER FOUND ONEIDA COUNTY ALUMINUM MONUMENT

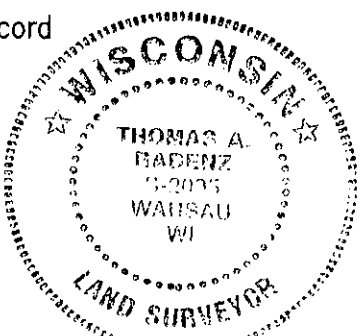
NORTH

NOT TO SCALE

RECEIVED AT LINCOLN COUNTY COURTHOUSE THIS 21ST DAY OF December 20 01
Thomas Radenz
LAND INFORMATION OFFICE

(i) I, Thomas A. Radenz, RLS certify that the corner location on this record was determined by me or under my direction and control and that this U.S. Public Land Survey Monument Record is correct and complete to the best of my knowledge and belief.

Signature Thomas A. Radenz Date 12/18/01



Index No. Z-2136-CU