

This form is intended to fulfill the requirements of Chapter A-E7.08 (3)(a) thru (l) U.S. Public Land Survey Monument Location Record, Wisconsin Administrative Code. Use the reverse side of form for continuation.

U.S. PUBLIC LAND SURVEY MONUMENT LOCATION RECORD

Recorders Data

USPLS CORNER: NORTH WITNESS MC SECTION: 36 TOWNSHIP: 36 NORTH RANGE: 6 EAST
 NAME OF WATERWAY FOR M.C. CORNER : NOKOMIS LAKE SECTION LINE: WEST
 (CITY)(VILLAGE)(TOWN) OF: NOKOMIS COUNTY OF: ONEIDA

Description of monument found or placed and all other evidence used as the basis for monument location; including monuments and measurements required if the corner location was reestablished by lost corner proportionate methods. Also indicate name of the original surveyor, original survey date and the corner monument, bearing trees, witness or other reference monuments established, including measured bearing and distance ties, from available survey records.

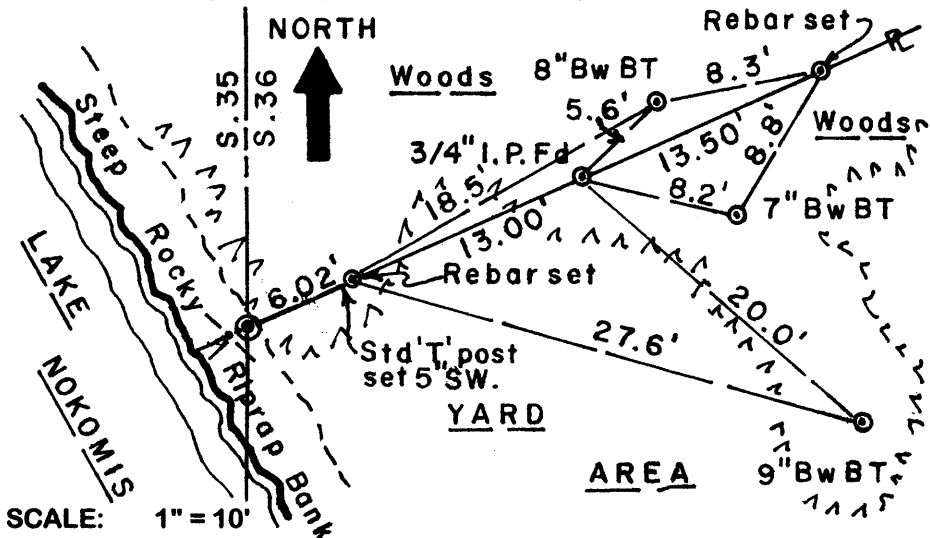
Record 1.25" dia. iron pipe found 0.89' West of section line at shoreline of Nokomis Lake by Stuart Foltz/RLS 1170 in September 1994, per Plat of Survey filed as B-2980, found disturbed this date under rocky rippapped shoreline.

So I reestablished a witnessed point on the section line by traverse represented on the reverse of this location record, for future land surveying purposes, as it was impractical to set a standard aluminum monument as a Witness MC on the section line due to steep rippapped lakeshore embankment conditions.

In October 1862, Joseph H. Jenkins/GLO set no original wood post as MC nor noted OBTs, as Nokomis Lake was impounded by daming afterwards.

This recovery completed September 11, 2004 and indirectly witnessed by my notification to adjoiner owner Gerald Dassow at Fire # 2099 Nokomis Road.

Plan view map of monument location with bearing and distance ties to a minimum of four(4) described witness or reference monuments of concrete, natural stone, iron, live bearing trees or equivalent material. If applicable, also show a minimum of two(2) bearing and distance ties to any other monument found and not accepted; including the bearing and distance from the accepted monument.



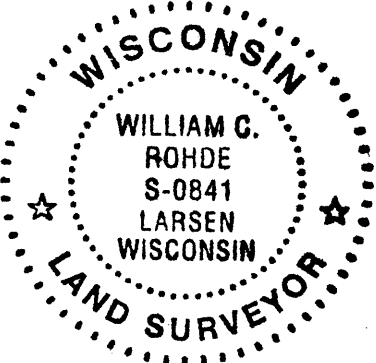
WITNESS MONUMENT TIES:

Note:
See survey traverse control references sketched in detail on the reverse side of this location record.

Rebars set are 5/8" dia. by 24" long with yellow poly RM cap.

Unless otherwise indicated, all bearing tree ties are to a .25" dia. by 2.5" long PK nail with a 1.25" dia. steel washer driven into unblazed right face and a .25" dia. by 2.5" long PK nail with a 2" dia. steel washer stamped BT is also driven into unblazed face of bearing tree at DBH; the basis for measured bearings is by compass to nearest degree and all tie distances are measured horizontal by steel tape corrected to nearest 1/100th feet at standard temperature of 68° F.

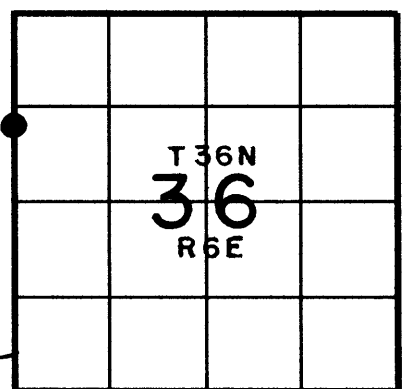
RLS SEAL:



LAND SURVEYOR CERTIFICATE:

I, William C. Rohde, hereby certify that I am duly licensed as a Professional Land Surveyor in the State of Wisconsin; that this USPLS monument location was determined by me and/or under my direct supervision and control; and that this U.S. Public Land Survey Monument Location Record is true and correct to the best of my knowledge and belief.

Signed: *William C. Rohde*
William C. Rohde RLS 841



SECTION LOCATION MAP
INDEX NO. W-X 21
3606352900

Date Signed: October 31, 2004

