

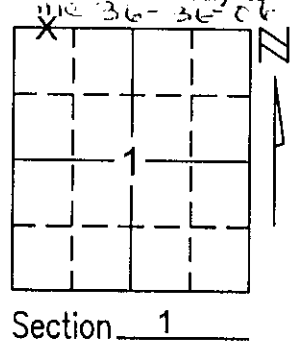
U.S. PUBLIC LAND SURVEY MONUMENT RECORD

Note: This form is intended and designed to fulfill all requirements of Wisconsin Administrative Code, Chapter A-E 5.02, U.S. Public Land Survey Monument Record (3)(a)(b)(c)(d)(e)(f)(g)(h)(i). An additional sheet may be added if necessary to conform with said requirements.

(a) Corner location: Township 35 North
 Range 6 East

COPY FROM
 LINCOLN COUNTY

Town/City/Village BRADLEY
 County LINCOLN



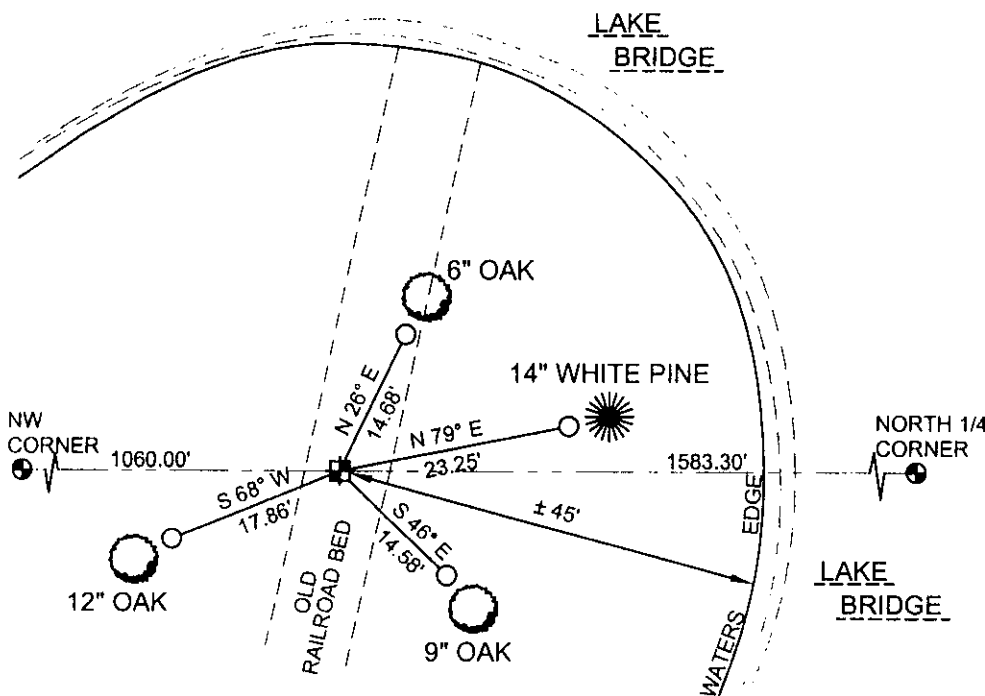
Section 1

(b)(f)(g)(h) Description of monument found at this corner and if it was accepted, state all evidence (material, testimonial, occupational, plats, records, other monuments) used as a basis for accepting. If not accepted or if nothing was found, state evidence used as basis for establishing location. If reestablished through lost corner proportionate methods, indicate all monuments, distances and directions used to establish.

THE NORTH 1/4 CORNER OF SECTION 1 WAS ESTABLISHED USING A 1966 SURVEY BY FOLTZ, A 1931 SURVEY BY HALL AND THE PLAT OF HIDDEN WATERS. MEANDER CORNERS WERE SET ON THE EAST AND WEST SIDE OF BRIDGE LAKE TO PERPETUATE THE NORTH 1/4 CORNER. SET LINCOLN COUNTY MONUMENT AND TIED OUT CORNER.

RECEIVED AT LINCOLN COUNTY
 COURTHOUSE THIS 21ST DAY
 OF December 20 01
Tom Radenz
 LAND INFORMATION OFFICE

(c)(d)(e) Plan view of corner with ties to at least 4 witness monuments. If in disagreement with previously established corner, show the distances between the two corners and also indicate the ties to the disputed corner.



COORDINATES ARE REFERENCED TO THE LINCOLN COUNTY COORDINATE SYSTEM AS DEVELOPED BY THE WISCONSIN DEPARTMENT OF TRANSPORTATION AND WERE DETERMINED BY GPS OBSERVATIONS ON CONTROL POINTS AS SUPPLIED BY LINCOLN COUNTY.

BEARINGS ARE REFERENCED TO MAGNETIC NORTH.

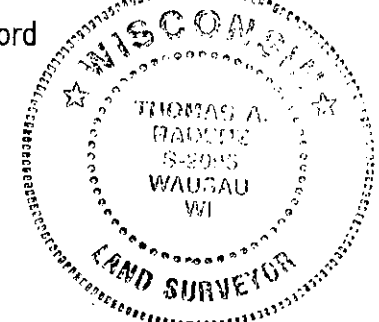
- - SET 3/4" x 30" REBAR W/ ALUM CAP 1' FROM BEARING TREE
- ⊠ - EAST MEANDER CORNER OF THE NW 1/4 CORNER SET LINCOLN COUNTY MONUMENT

NORTH

NOT TO SCALE

(i) I, Thomas A. Radenz, RLS certify that the corner location on this record was determined by me or under my direction and control and that this U.S. Public Land Survey Monument Record is correct and complete to the best of my knowledge and belief.

Thomas A. Radenz
 Signature _____ Date 12/21/01



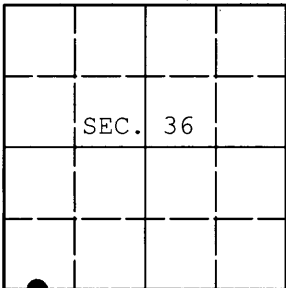
Index No. 221-2236-06

3606-36-06-36

U.S. PUBLIC LAND SURVEY MONUMENT RECORD

Note: This form is intended and designed to fulfill all requirements of Wisconsin Administrative Code, Chapter A-E 7.08 U.S. Public Land Survey Monument Record (3) (a) (b) (c) (d) (e) (f) (g) (h) (i). An additional sheet may be added if necessary to conform with said requirements.

(a) CORNER LOCATION: WISCRS (Oneida County)
 Meander Cor. of Secs. 1 & 36 N: 134,832.77 USft
 Township 35 & 36 North E: 193,026.41 USft
 Range 6 East of the 4th P.M. Datum: NAD 1983(2011)
 Town of Nokomis County of Oneida



(b) HISTORY OF ORIGINAL CORNER ESTABLISHMENT

Original Surveyor: _____ Original Accessories: _____
 Date of Survey: Commenced: _____
 Completed: _____

(b)(f)(g)(h) Description of monument found at this corner and if it was accepted, state all evidence (material, testimonial, occupational, plats, records, other monuments) used as a basis for accepting. If not accepted or if nothing was found, state evidence used as basis for establishing location. If re-established through lost corner proportionate methods, indicate all monuments, distances and directions used to establish. Indicate type of monument and sign post found or set.

NOTE: This is a perpetuation of a previous USPLS Monument Record by Thomas A. Radenz, RLS dated December 21, 2001 and filed in the office of the Lincoln County Surveyor. A complete history of the corner can be found on the previous monument record. I accept the previous location as a true and faithful perpetuation or reestablishment of the original corner location and further perpetuate it as follows.

August 7, 2014: I found and accepted Radenz's monument, a 4" diam. Lincoln Co. Berntsen aluminum monument flush with the ground. Radenz's accessories were found in substantial agreement with his previous record and were not remeasured as the sole purpose of this work is to report the coordinates of the corner point.

The coordinates shown were derived from a direct RTN GPS observation referenced to the WISCORS network.

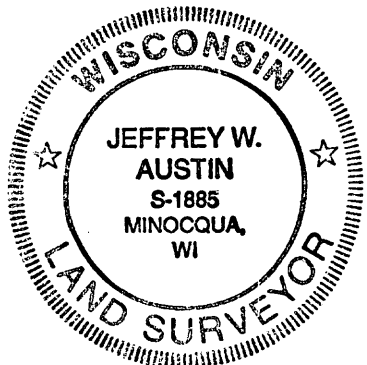
(c)(d)(e) Plan view of corner with ties to at least 4 witness monuments. If in disagreement with previously established corner, show the distances between the two corners and also indicate the ties to the disputed.

REGISTER OF DEEDS OFFICE
 ONEIDA COUNTY
 FILED

OCT 13 2014

AT _____ O'CLOCK _____ M
 KYLE J. FRANSON
 REGISTER OF DEEDS

(i) I, Jeffrey W. Austin, Registered Land Surveyor No. S-1885, hereby certify that the corner location on this record was determined by me or under my direction and control and that this U.S. Public Land Survey Monument Record is correct and complete to the best of my knowledge and belief.



Signature _____

Date _____

3606360036 (INDEX NO. Z-21,22)

[Handwritten Signature] SEP. 7, 2014