

This form is intended to fulfill the requirements of Chapter A-E7.08 (3)(a) thru (i) U.S. Public Land Survey Monument Location Record, Wisconsin Administrative Code. Use the reverse side of form for continuation.

U.S. PUBLIC LAND SURVEY MONUMENT LOCATION RECORD

USPLS CORNER: NW SECTION CORNER SECTION: 11 TOWNSHIP: 36 NORTH RANGE: 7 EAST
 NAME OF WATERWAY FOR M.C. CORNER : N/A SECTION LINE: N/A
 (CITY)(VILLAGE)(TOWN) OF: WOODBORO COUNTY OF: ONEIDA

Description of monument found or placed and all other evidence used as the basis for monument location; including monuments and measurements required if the corner location was reestablished by lost corner proportionate methods. Also indicate name of the original surveyor, original survey date and the corner monument, bearing trees, witness or other reference monuments established, including measured bearing and distance ties, from available survey records.

Found and accepted an older 2" dia. galvanized iron pipe with stamped brass cap 25" up in brushy woods 35' or so West of an old woods road bearing N20°E; I left monument in place as very stable and nearly plumb for new ties to cap center. I also found a standard white poly 'T' marker post N55°W 1 foot from monument.

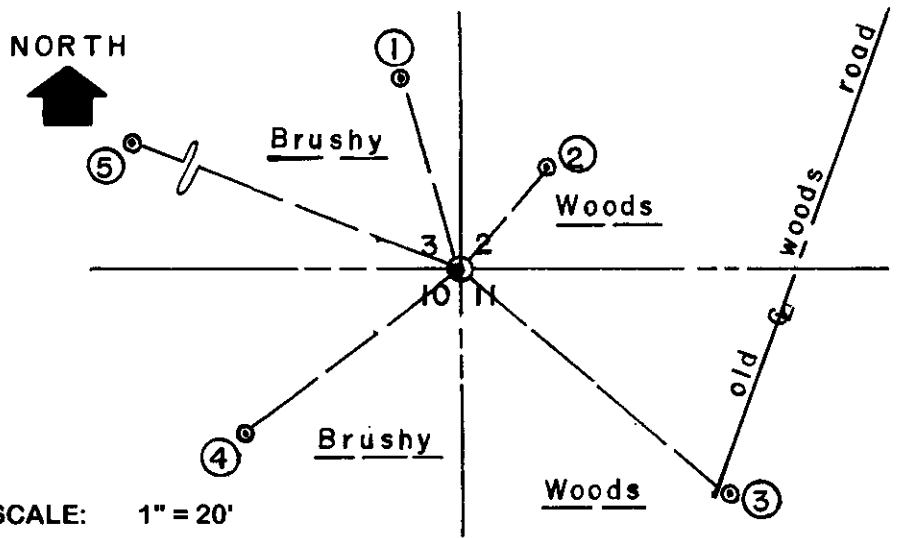
In November 1862, Joseph H. Jenkins/GLO set a wood post as the original corner and noted OBTs: a 16" Hemlock S59°W 27 links and an 18" Hemlock N45°E 20 links; all are now obliterated.

In 1937, V.M. Maine/Oneida County Surveyor retraced B.F. Dorrs survey and subdivision of adjoining Section 3 and set an official brass capped iron pipe monument at this corner per his Plat of Survey filed as L-1044 in Oneida County survey records; found this date.

In February 1994, Dennis Roberts/RLS 1863 found a 2" dia. brass capped iron pipe at this corner and noted new BTs with ties to a nail in each: 8" Aspen N41°E 13.61', found OK; 7" Aspen S66°E 14.28', not found; 11" Oak N71°W 43.38', found OK; 11" twin 11" Mr N20°W 22.03', found OK, per his Plat of Survey filed as C-1358 in Oneida County survey records. I found no nails visible in his noted BTs as undoubtedly overgrown.

This recovery completed May 13, 2003; there were no direct witnesses.

Plan view map of monument location with bearing and distance ties to a minimum of four(4) described witness or reference monuments of concrete, natural stone, iron, live bearing trees or equivalent material. If applicable, also show a minimum of two(2) bearing and distance ties to any other monument found and not accepted; including the bearing and distance from the accepted monument.



- WITNESS MONUMENT TIES:**
- ① Old 10"/12" double Mr BT with upper & lower face blazes open N17°W 21.03' to PK/W in left face.
 - ② Old 6" Aspen BT with upper & lower face blazes open N40°E 13.67'.
 - ③ New 8" Aspen BT S40°E 36.30'.
 - ④ New 7" Aspen BT S52°W 28.05'.
 - ⑤ Old 11" Oak BT with upper & lower face blazes shut but scars plain N68°W 42.75'.
- I painted old blazes and flagged new BTs, monument & T post blaze orange.

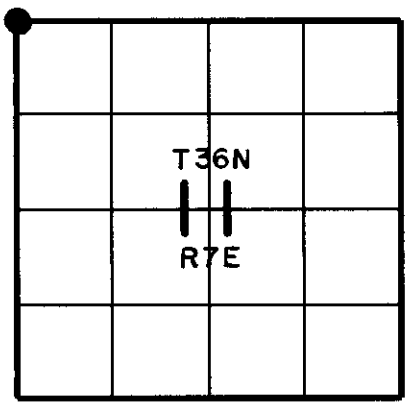
SCALE: 1" = 20'

Unless otherwise indicated, all bearing tree ties are to a .25" dia. by 2.5" long PK nail with a 1.25" dia. steel washer driven into unblazed right face and a .25" dia. by 2.5" long PK nail with a 2" dia. steel washer stamped BT is also driven into unblazed face of bearing tree at DBH; the basis for measured bearings is by compass to nearest degree and all tie distances are measured horizontal by steel tape corrected to nearest 1/100th feet at standard temperature of 68° F.



LAND SURVEYOR CERTIFICATE:
 I, William C. Rohde, hereby certify that I am duly licensed as a Professional Land Surveyor in the State of Wisconsin; that this USPLS monument location was determined by me and/or under my direct supervision and control; and that this U.S. Public Land Survey Monument Location Record is true and correct to the best of my knowledge and belief.

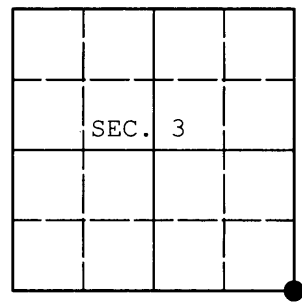
Signed *William C. Rohde*
 William C. Rohde RLS 841



U.S. PUBLIC LAND SURVEY MONUMENT RECORD

Note: This form is intended and designed to fulfill all requirements of Wisconsin Administrative Code, Chapter A-E 7.08 U.S. Public Land Survey Monument Record (3) (a) (b) (c) (d) (e) (f) (g) (h) (i). An additional sheet may be added if necessary to conform with said requirements.

(a) CORNER LOCATION: WISCRS (Oneida County)
Cor. of Secs. 2, 3, 10 & 11 N: 162,127.265 USft
Township 36 North E: 218,376.623 USft
Range 7 East of the 4th P.M. Datum: NAD 1983(2011)
Town of Woodboro County of Oneida



(b) HISTORY OF ORIGINAL CORNER ESTABLISHMENT

Original Surveyor: Original Accessories:
Date of Survey:

(b) (f) (g) (h) Description of monument found at this corner and if it was accepted, state all evidence (material, testimonial, occupational, plats, records, other monuments) used as a basis for accepting. If not accepted or if nothing was found, state evidence used as basis for establishing location. If re-established through lost corner proportionate methods, indicate all monuments, distances and directions used to establish. Indicate type of monument and sign post found or set.

NOTE: This is a perpetuation of a previous USPLS Monument Record by William C. Rohde, RLS dated August 1, 2003 and filed in the office of the Oneida County Register of Deeds. A complete history of the corner can be found on the previous monument record. I accept the previous location as a true and faithful perpetuation or reestablishment of the original corner location and further perpetuate it as follows.

November 13, 2013: I found and accepted Rohde's monument, a 2-1/2" diam. iron pipe with 2-1/2" diam. brass cap projecting 24" above the ground surface. Rohde's accessories were found in substantial agreement with his previous record and were not remeasured as the sole purpose of this work is to report the coordinates of the corner point.

The coordinates shown were derived from a direct RTN GPS observation referenced to the WISCORS network.

(c) (d) (e) Plan view of corner with ties to at least 4 witness monuments. If in disagreement with previously established corner, show the distances between the two corners and also indicate the ties to the disputed.

REGISTER OF DEEDS OFFICE
ONEIDA COUNTY
FILED

DEC 23 2013

AT O'CLOCK M
KYLE J. FRANSON
REGISTER OF DEEDS



(i) I, Jeffrey W. Austin, Registered Land Surveyor No. S-1885, hereby certify that the corner location on this record was determined by me or under my direction and control and that this U.S. Public Land Survey Monument Record is correct and complete to the best of my knowledge and belief.

Signature [Handwritten Signature] Date DEC. 9, 2013