

This form is intended to fulfill the requirements of Chapter A-E 7.08 (3)(a) thru (i) U.S. Public Land Survey Monument Location Record, Wisconsin Administrative Code. Use the reverse side of form for continuation.

U.S. PUBLIC LAND SURVEY MONUMENT LOCATION RECORD

USPLS CORNER: NORTH WITNESS MC SECTION: 2 TOWNSHIP: 36 NORTH RANGE: 7 EAST

NAME OF WATERWAY FOR M.C. CORNER : RUDY LAKE SECTION LINE: WEST

~~(CITY)(VILLAGE)(TOWN) OF:~~ CRESCENT COUNTY OF: ONEIDA

Description of monument found or placed and all other evidence used as the basis for monument location; including monuments and related measurements required if the corner location was reestablished by lost corner proportionate methods. Also indicate name of original surveyor, original survey date and the corner monument, bearing trees, witness or other reference monuments established; including measured bearing and distance ties, from available records.

Found and accepted an older uncapped 3/4" dia. iron pipe 3" up and painted white; I pulled the 24" long iron pipe and drove a standard 2" dia. x 30" long aluminum pipe monument with stamped Oneida County cap 3" up into soil cavity left by old iron pipe below grade and left the old iron pipe flat on grade nearby. Corner falls 3' North of lake shoreline this date.

In November 1862, Joseph H. Jenkins/GLO did not set a wood post as he did not meander this small lake encountered South of the NW corner of Section 2.

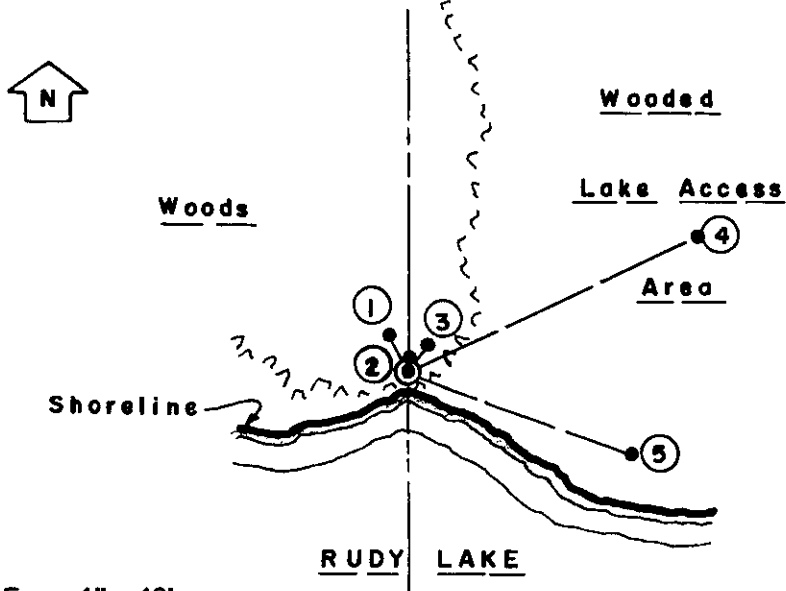
In July 1937, V.M. Maine notes north shore of lake at 24.507 chains South of NW section corner per his map of B.F. Dorrs subdivision of Section 3, T36N, R7E filed as L-1044 in Oneida County survey records; no post or BTs were noted.

In June 1996, Todd J. Loftus/RLS 1523 indicates a 1.5" dia. iron pipe set at this corner on North shore of Rudy Lake per legend on Plat of Survey filed as B-3470 in Oneida County survey records; no BTs were noted. I could not locate the 1.5" dia. iron pipe in nearby area by MLR detection, so I accepted the 3/4" dia. iron pipe found, which also fell S10°W 2.00' from an old 60d spike found in an 8" Sb BT not of apparent record. Portions of an old woven wire fence were also found down in grass North of the iron pipe found.

I set a standard white poly 'T' marker post 12" SE of the new corner monument.

This recovery completed October 16, 2002; there were no direct witnesses.

Plan view map of monument location with bearing and distance ties to a minimum of four(4) described witness or reference monuments of concrete, natural stone, iron, live bearing trees or equivalent material. If applicable, also show a minimum of two(2) bearing and distance ties to any other monument found and not accepted; including the bearing and distance from the accepted monument.



WITNESS MONUMENT TIES:

- ① New 8" Sb BT N27°W 9.90'.
- ② Old unrecorded 8" Sb BT N10°E 2.00'.
- ③ New 10" Hemlock BT N35°E 6.32'.
- ④ New 12" Sb BT N64°E 66.68'.
- ⑤ New 12" Sb BT S70°E 49.51'.

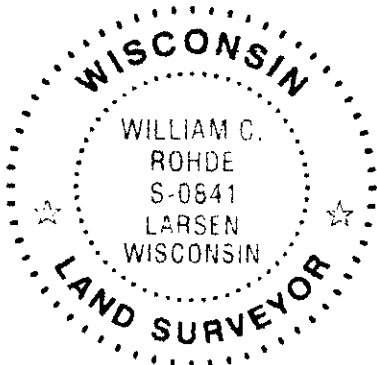
Note:

I compassed a line North thru brushy woods which projected onto the centerline of blacktop roadway North to NW section corner within 3 feet +/- . A newer N/S fence is West of corner on the extension of West road R/W +/- .

SCALE: 1" = 40'

Unless otherwise indicated, all bearing tree ties are to a .25" dia. by 2.5" long PK nail with a 1.25" dia. steel washer driven into unblazed right face and a .25" dia. by 2.5" long PK nail with a 2" dia. steel washer stamped BT is also driven into unblazed face of bearing tree at DBH; the basis for measured bearings is by compass to nearest degree and all tie distances are measured horizontal by steel tape corrected to nearest 1/100th feet at standard temperature of 68° F.

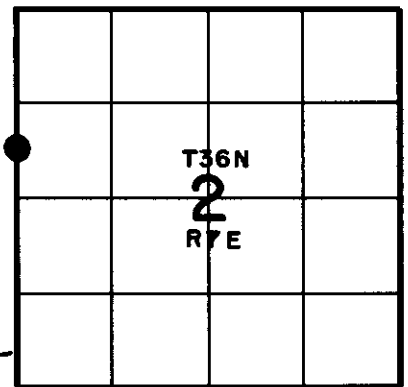
RLS SEAL:



LAND SURVEYOR CERTIFICATE:

I, William C. Rohde, hereby certify that I am duly licensed as a Professional Land Surveyor in the State of Wisconsin; that this USPLS monument location was determined by me and/or under my direct supervision and control; and that this U.S. Public Land Survey Monument Location Record is true and correct to the best of my knowledge and belief.

Signed: *William C. Rohde*
William C. Rohde RLS 841



SECTION LOCATION MAP

INDEX NO. BC 17

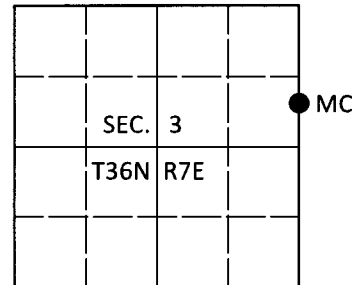
3607032700

U.S. PUBLIC LAND SURVEY MONUMENT RECORD

Note: This form is intended and designed to fulfill all requirements of Wisconsin Administrative Code, Chapter A-E 7.08 U.S. Public Land Survey Monument Record (3)(a-i).

(a) CORNER LOCATION
 Meander Cor. of Secs. 2 & 3
 Township 36 North
 Range 7 East of the 4th P.M.
 Town of Woodboro
 County of Oneida

WISCRS - Oneida County
 N: 165,471.23 USft
 E: 218,379.20 USft
 Datum: NAD 83(2011)
 GNSS Method: RTN - Offset
 GNSS Control: WISCORS VRS



(b) HISTORY OF ORIGINAL CORNER ESTABLISHMENT

Original Surveyor:

Original Accessories:

Date of Survey Commenced:
 Completed:

See previous monument record(s)

(b)(f)(g)(h) Description of monument found at this corner and if it was accepted, state all evidence (material, testimonial, occupational, plats, records, other monuments) used as a basis for accepting. If not accepted or if nothing was found, state evidence used as basis for establishing location. If re-established through lost corner proportionate methods, indicate all monuments, distances and directions used to establish. Indicate type of monument and sign post found or set.

This is a perpetuation of the following monument record(s) that comprise a complete history of the corner:

Mar. 1, 2003: USPLS Monument Record No. 3607032700 by William C. Rohde, PLS

May 16, 2020: I found and accepted the record monument, a 2.4" diam. aluminum pipe with a 3.3" diam. Oneida Co. aluminum cap projecting 6" above the ground surface. I found or established accessories as shown below. I found a white vinyl sign post bearing East, 1.0 ft.

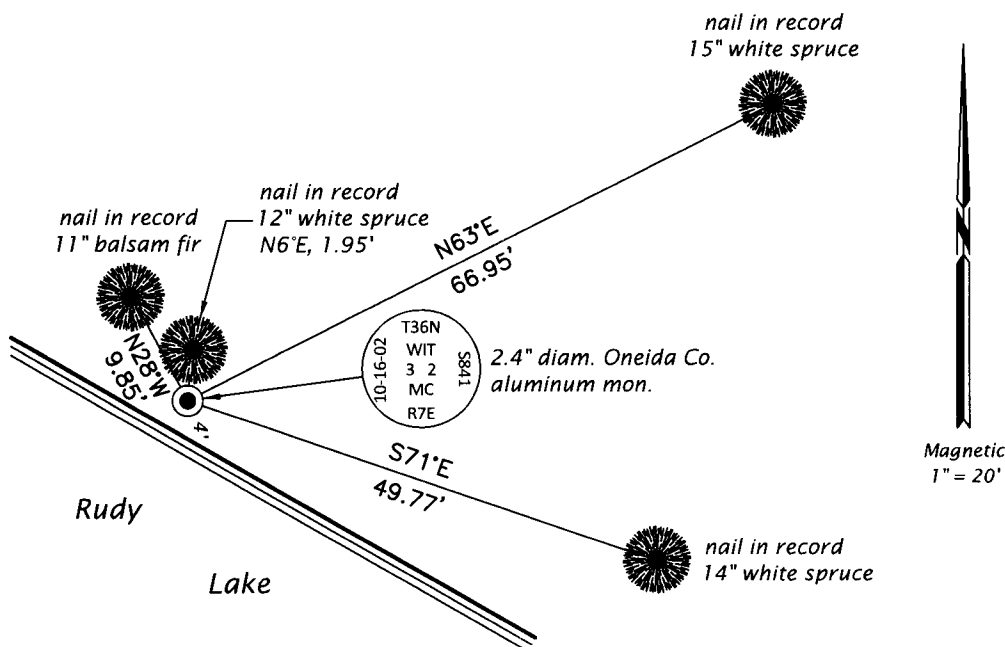
The coordinate value shown has been verified by at least one of the following methods: 1) comparison to a previously GPS determined published value; 2) the value is the average of two or more GPS observations at a markedly different time; 3) one or more distances were measured back to the GPS observed corner from temporary GPS observed offset locations.

REGISTER OF DEEDS OFFICE
 ONEIDA COUNTY
 FILED

JUN 26 2020

KYLE J. FRANSON
 REGISTER OF DEEDS

(c)(d)(e) Plan view of corner with ties to at least 4 witness monuments. If in disagreement with previously established corner, show the distances between the two corners and also indicate the ties to the disputed.



(i) I, Jeffrey W. Austin, Professional Land Surveyor No. S-1885, hereby certify that the corner location on this record was determined by me or under my direction and control and that this U.S. Public Land Survey Monument Record is correct and complete to the best of my knowledge and belief.


 Signature

JUNE 5, 2020
 Date