

U.S. PUBLIC LAND SURVEY MONUMENT RECORD

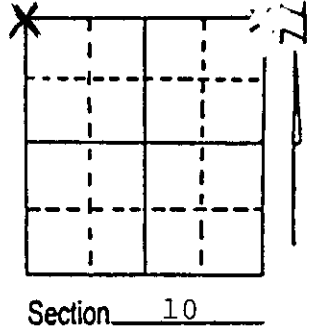
Note: This form is intended and designed to fulfill all requirements of Wisconsin Administrative Code, Chapter A-E 5.02, U.S. Public Land Survey Monument Record (3) (a) (b) (c) (d) (e) (f) (g) (h) (i). An additional sheet may be added if necessary to conform with said requirements.

(a) Corner location: Township 36 North

Range 7 East/West

Town/City/Village Woodboro

County Oneida



(b) (f) (g) (h) Description of monument found at this corner and if it was accepted, state all evidence (material, testimonial, occupational, plats, records, other monuments) used as a basis for accepting. If not accepted or if nothing was found, state evidence used as basis for establishing location. If reestablished through lost corner proportionate methods, indicate all monuments, distances and directions used to establish.

November 1862 by Joseph H. Jenkins at 80.00 chains set post for section corner:

- 24" White Pine, N31°E, 9 links (5.94') - Badly decayed stump 11/25/87.
- 10" White Pine, S52°E, 30 links (19.80').
- 10" Aspen, S48°W, 50 links (33.00").
- 14" White Pine, N61°W, 40 links (26.40').

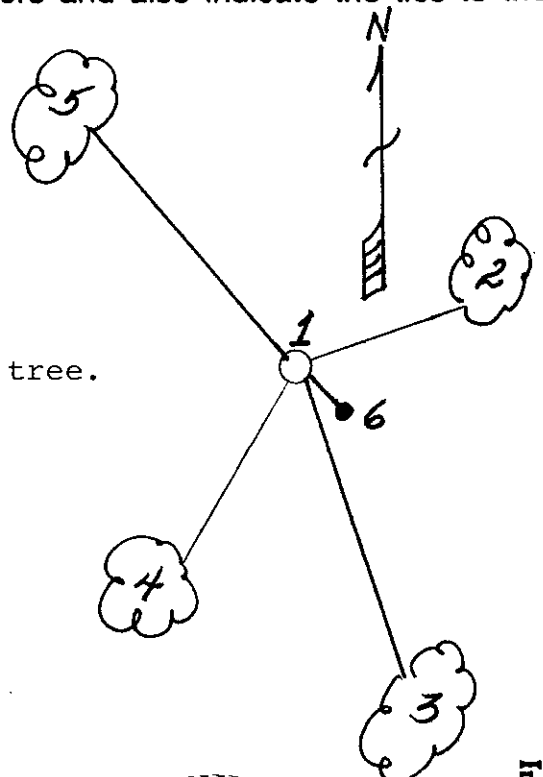
July 26, 1937; Maine found an iron pipe at corner position with stumps of NE and SE with BT scribing plain. He set county monument, a 2" x 36" galv. iron pipe/brass cap.

November 25, 1987; Milo E. Stefan found Maine's corner and cut new BT's and set sign post.

(c) (d) (e) Plan view of corner with ties to at least 4 witness monuments. If in disagreement with previously established corner, show the distances between the two corners and also indicate the ties to the disputed corner.

1. 2" x 36" galv. iron pipe with brass cap.
2. 12" Red Oak, N79°E, 26.79. *
3. 12" Red Oak, S31°E, 54.90. *
4. 5" White Birch, S29°W, 32.25'. **
5. 5" Red Oak, N46°W, 55.94'. **
6. Plastic sign post, SE, 1.5'.

*BTs scribed "T36N,R7E S(section) BT."
**BTs scribed "X BT"
Distances measured to nail in side of tree.



(i) I, Milo E. Stefan
(type or print name) certify that the corner location on this record was determined by me or under my direction and control and that this U.S. Public Land Survey Monument Record is correct and complete to the best of my knowledge and belief.

Milo E. Stefan Signature 12/6/87 Date



Index No. E-13

3607040000

This form is intended to fulfill the requirements of Chapter A-E 7.08 (3) (a) thru (f) U.S. Public Land Survey Monument Location Record, Wisconsin Administrative Code.

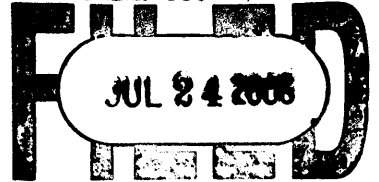
U.S. PUBLIC LAND SURVEY MONUMENT LOCATION RECORD

USPLS CORNER: NW SECTION CORNER, SECTION 10, TOWNSHIP 36 NORTH, RANGE 7 EAST

NAME OF WATERWAY FOR MEANDER CORNER: N/A SECTION LINE: N/A

TOWN OF: WOODBORO COUNTY OF: ONEIDA

REGISTER OF DEEDS OFFICE
ONEIDA COUNTY, WIS.



At _____ O'Clock _____ M
THOMAS H. LEIGHTON
REGISTER OF DEEDS

Description of monument found or placed and all other evidence used as the basis for monument location: including monuments and measurements required if the corner location was reestablished by lost proportionate methods. Also indicate name of original surveyor, original survey date and the corner monument, bearing trees, witness or other reference monuments established, including measured bearing and distance ties, from available survey records.

1862 - Original Corner established by Joseph H. Jenkins, set post at 80.00 chains
NOV. Original BT's: White Pine, 24", N31°E, 9 lks. White Pine 10", S52°E, 30 lks.
Original BT's: Aspen, 10", S48°W, 50 lks. White pine 14", N61°W, 40 LKS.

1937 JULY 26 - Maine found an iron pipe at this corner position with stumps of NE and SE with BT scribing plain.
He set 2" x 48" galv. pipe with brass cap.

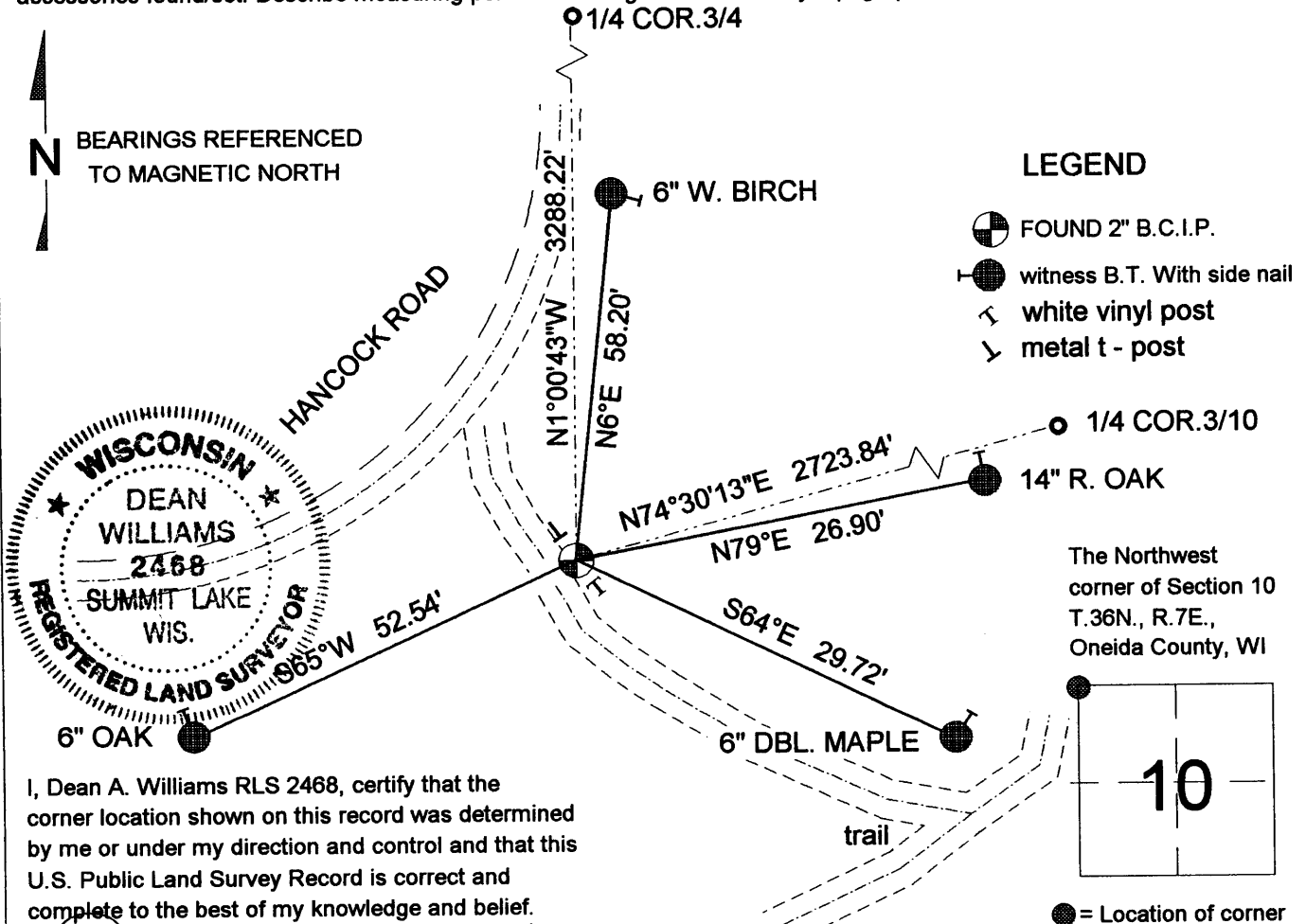
1987 NOVEMBER 25 - Milo E. Stefan found Maine's corner and cut new BT's and set sign post.

2006 JUNE 8 - Dean A. Williams found 2" B.C.I.P. bent over flat and all BT's (dead).
Staightened iron pipe and it broke off at 30". Dug out straight base sawed off bent portion and reset 2" B.C.I.P.
x 24" flush with ground and set metal t-post guard and white vinyl post witness and retied thus:

Physical description of the monument set:

2006 - Dean A. Williams and James Gardner Reset 2" x 24" B.C.I.P.
Accepted as best possible evidence of corner location.

Describe the accessories used to perpetuate the location of the corner. Include a plan view drawing and indicate accessories found/set. Describe measuring point on bearing trees. Show any topographic features that would aid in



I, Dean A. Williams RLS 2468, certify that the corner location shown on this record was determined by me or under my direction and control and that this U.S. Public Land Survey Record is correct and complete to the best of my knowledge and belief.

Dean Williams 7/13/2006
Signature Date

3607040000

INDEX NO. E 13