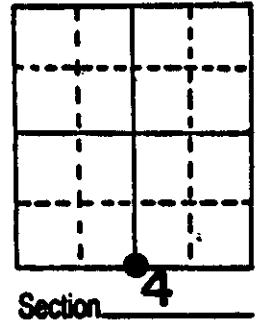


U.S. PUBLIC LAND SURVEY MONUMENT RECORD

Note: This form is intended and designed to fulfill all requirements of Wisconsin Administrative Code, Chapter A-E 5.02, U.S. Public Land Survey Monument Record (3) (a) (b) (c) (d) (e) (f) (g) (h) (i). An additional sheet may be added if necessary to conform with said requirements.

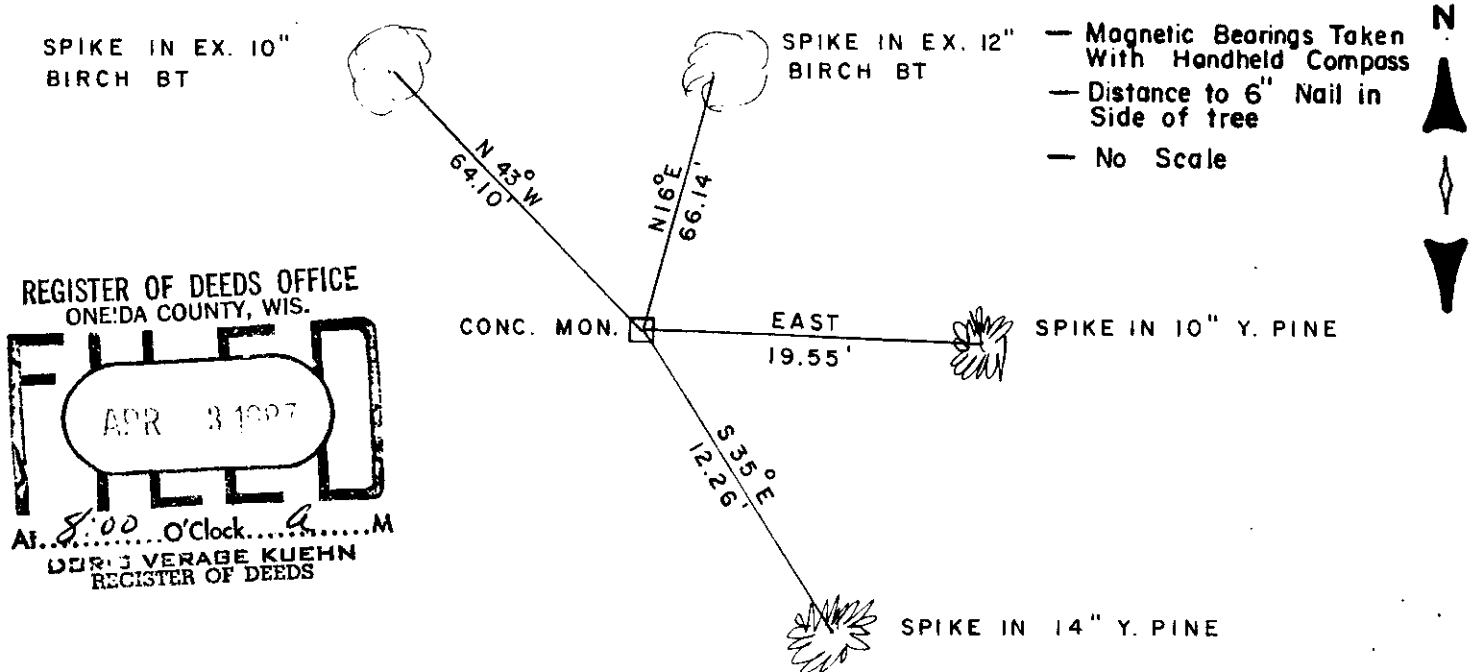
(a) Corner location: Township 36 North
 Range 7 East/West
 Town/City/Village Woodboro
 County Oneida



(b) (f) (g) (h) Description of monument found at this corner and if it was accepted, state all evidence (material, testimonial, occupational, plats, records, other monuments) used as a basis for accepting. If not accepted or if nothing was found, state evidence used as basis for establishing location. If reestablished through lost corner proportionate methods, indicate all monuments, distances and directions used to establish.

- 1863 Original corner by J. Jenkins; West between 4 & 9 39.97 set $\frac{1}{4}$ post, BT's Birch 10" N23W 17, Hem. 9" S22W 27.
- 1893 B.F. Dorr at corner & found original Birch stmp & Hem.
- 1933 H.C. Hall set a 6" concrete monument at original position & made BT's W. Pine stmp. 24" N53-14'W 76.3', W. Pine stmp 24" N13E 53.1'
- 1937 V. Maine found Hall's monument & BT's.
- 1986 I found Hall's Monument & made BT's as shown below.

(c) (d) (e) Plan view of corner with ties to at least 4 witness monuments. If in disagreement with previously established corner, show the distances between the two corners and also indicate the ties to the disputed corner.



REGISTER OF DEEDS OFFICE
 ONEIDA COUNTY, WIS.
FILED
 APR 3 1987
 At 8:00 O'Clock...M
 DEBORAH VERABE KUEHN
 REGISTER OF DEEDS

(i) I, William E. Bandow
 (type or print name) certify that the corner location on this record was determined by me or under my direction and control and that this U.S. Public Land Survey Monument Record is correct and complete to the best of my knowledge and belief.

William E. Bandow 12-17-86
 Signature Date



Index No. E-11

3607040020