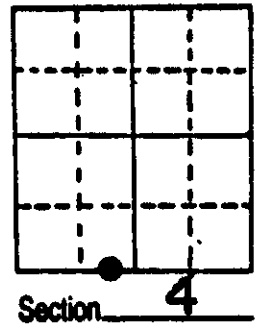


U.S. PUBLIC LAND SURVEY MONUMENT RECORD

Note: This form is intended and designed to fulfill all requirements of Wisconsin Administrative Code, Chapter A-E 5.02, U.S. Public Land Survey Monument Record (3) (a) (b) (c) (d) (e) (f) (g) (h) (i). An additional sheet may be added if necessary to conform with said requirements.

(a) Corner location: Township 36 North
 Range 7 East/West
 Town/City/Village Woodboro
 County Oneida



(b) (f) (g) (h) Description of monument found at this corner and if it was accepted, state all evidence (material, testimonial, occupational, plats, records, other monuments) used as a basis for accepting. If not accepted or if nothing was found, state evidence used as basis for establishing location. If reestablished through lost corner proportionate methods, indicate all monuments, distances and directions used to establish.

1863 Original corner by J. Jenkins; West between 4 & 9 48.50 lake & set MP, BT's Y. Pine 12" N23W 38, Y.Pine 14" N46E 37.

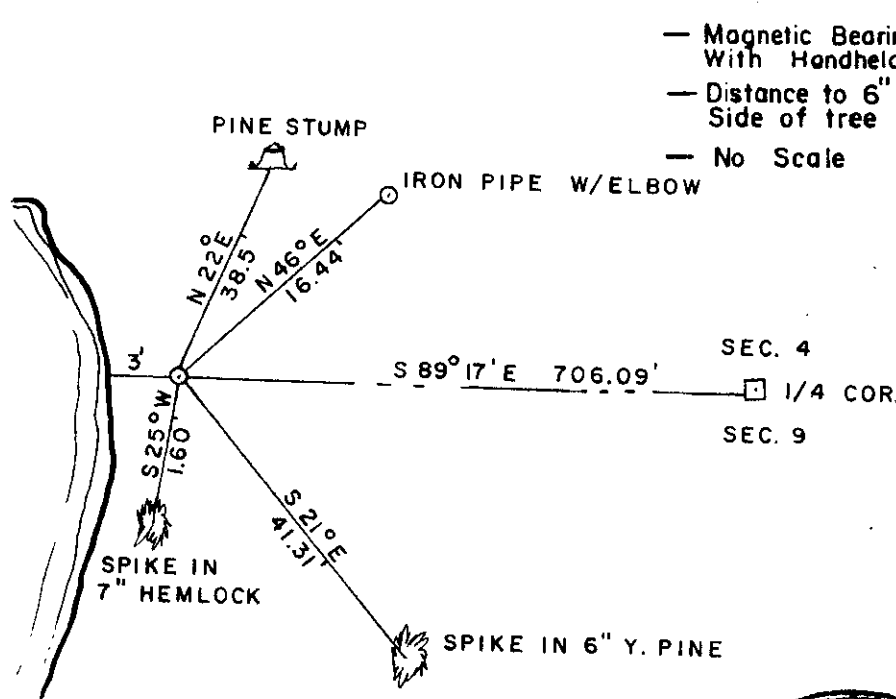
1912 D.H. Vaughan found original line to lake. Set MC BT's W. Pine 12" S63E 37, Y. Pine 16" N19E 58½.

1986 I found a pine stmp. N22E 38.5'. This position agrees with Hall's survey for south line in 1933. Set a 1"x24" iron pipe flush and made the following BT's.

(c) (d) (e) Plan view of corner with ties to at least 4 witness monuments. If in disagreement with previously established corner, show the distances between the two corners and also indicate the ties to the disputed corner.

REGISTER OF DEEDS OFFICE
 ONEIDA COUNTY, WIS.
FILED
 APR 3 1987
 At 8:00 O'Clock M
 DEB J VERABE KUEHN
 REGISTER OF DEEDS

ONEIDA LAKE



— Magnetic Bearings Taken With Handheld Compass
 — Distance to 6" Nail in Side of tree
 — No Scale

N

(i) I, William E. Bandow
 (type or print name) certify that the corner location on this record was determined by me or under my direction and control and that this U.S. Public Land Survey Monument Record is correct and complete to the best of my knowledge and belief.

William E. Bandow 12-19-86
 Signature Date



GENISOT & ASSOCIATES INC.
 1512 EAGLE ST., RHINELANDER, WIS.

Index No. E 10-11

3607040025