

# U.S. PUBLIC LAND SURVEY MONUMENT RECORD

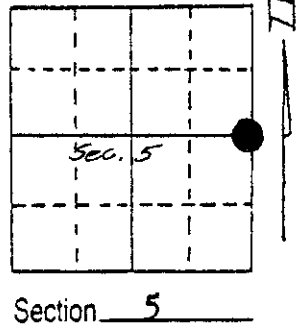
Note: This form is intended and designed to fulfill all requirements of Wisconsin Administrative Code, Chapter A-E 5.02, U.S. Public Land Survey Monument Record (3) (a) (b) (c) (d) (e) (f) (g) (h) (i). An additional sheet may be added if necessary to conform with said requirements.

(a) Corner location: Township 36 North

Range 7 East/West

Town/City/Village Woodboro

County Oneida



Section 5

(b) (f) (g) (h) Description of monument found at this corner and if it was accepted, state all evidence (material, testimonial, occupational, plats, records, other monuments) used as a basis for accepting. If not accepted or if nothing was found, state evidence used as basis for establishing location. If reestablished through lost corner proportionate methods, indicate all monuments, distances and directions used to establish.

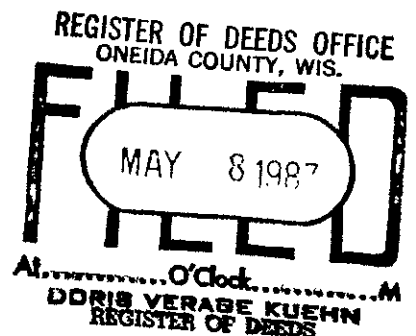
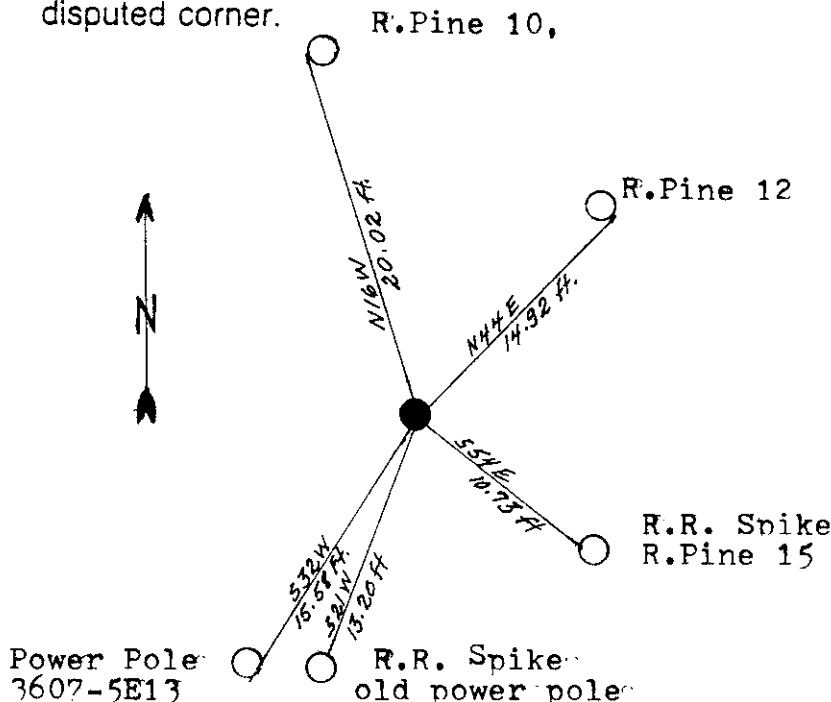
Original Survey in 1862 by Joseph H. Jenkins. South corrected 52.80 Chains, Set post: Tam. 10, S8E, 12 lks.; Y. Pine 20, S61 W., 60 lks. South 2.01 Ch. intersect lake and set meander post.

Survey by John Fisher in 1975. He found corner marked by 1 1/2 inch Iron Pipe. Set Railroad Spikes in N. Pine 12", S54E, 10.8 Ft. and in Power Pole #3607-5E13, S22W, 13.2 ft.

In 1981 I found Fishers References and 2 pieces of Iron Pipe along side of each other. On May 5, 1987 I recovered the 2 pieces of iron pipe and the railroad spikes. The power pole had been cut off and was being used for a Utility pole, a new pole was set N.74 W, 3.2 ft. from old pole. The Number had been transferred to the new pole.

I replaced the iron pipe with a 30 inch long Oneida County Aluminum Monument with cap, stamped to identify corner and set white witness post 6 inches, SW of monument. I made 3 new reference ties by placing Cement Nails in the side of 2 Norway Pine and the new power pole.

(c) (d) (e) Plan view of corner with ties to at least 4 witness monuments. If in disagreement with previously established corner, show the distances between the two corners and also indicate the ties to the disputed corner.



(i) I, Jean F. Resvick  
 (type or print name) certify that the corner location on this record was determined by me or under my direction and control and that this U.S. Public Land Survey Monument Record is correct and complete to the best of my knowledge and belief.

Jean F. Resvick Signature Date May 5, 1987



Index No. 6-9

3607052000

# U.S. PUBLIC LAND SURVEY MONUMENT RECORD

REGISTER OF DEEDS OFFICE  
ONEIDA COUNTY  
FILED

NOV 26 2018

Note: This form is intended and designed to fulfill all requirements of the Wisconsin Administrative Code, Chapter A-E 7.08 U.S. Public Land Monument Record (3)(a)(b)(c)(d)(e)(f)(g)(h)(i). An additional sheet may be added if necessary to conform with said requirements.

**(a) CORNER LOCATION:**

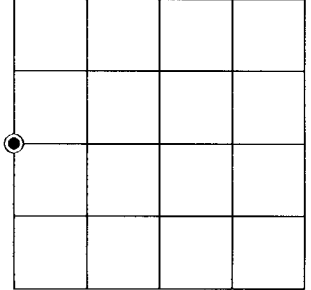
West Quarter Corner of Section 4  
Township 36 North  
Range 7 East  
Town of Woodboro  
County of Oneida

North:  
East:  
Datum:  
GNSS Method:  
GNSS Control:

KYLE J. FRANSON  
REGISTER OF DEEDS

(RECORDING AREA)

SECTION 4



**SEE PREVIOUS U.S.P.L.S. MONUMENT RECORD DATED MAY 5, 1987.**

**(b) HISTORY OF ORIGINAL CORNER ESTABLISHMENT**

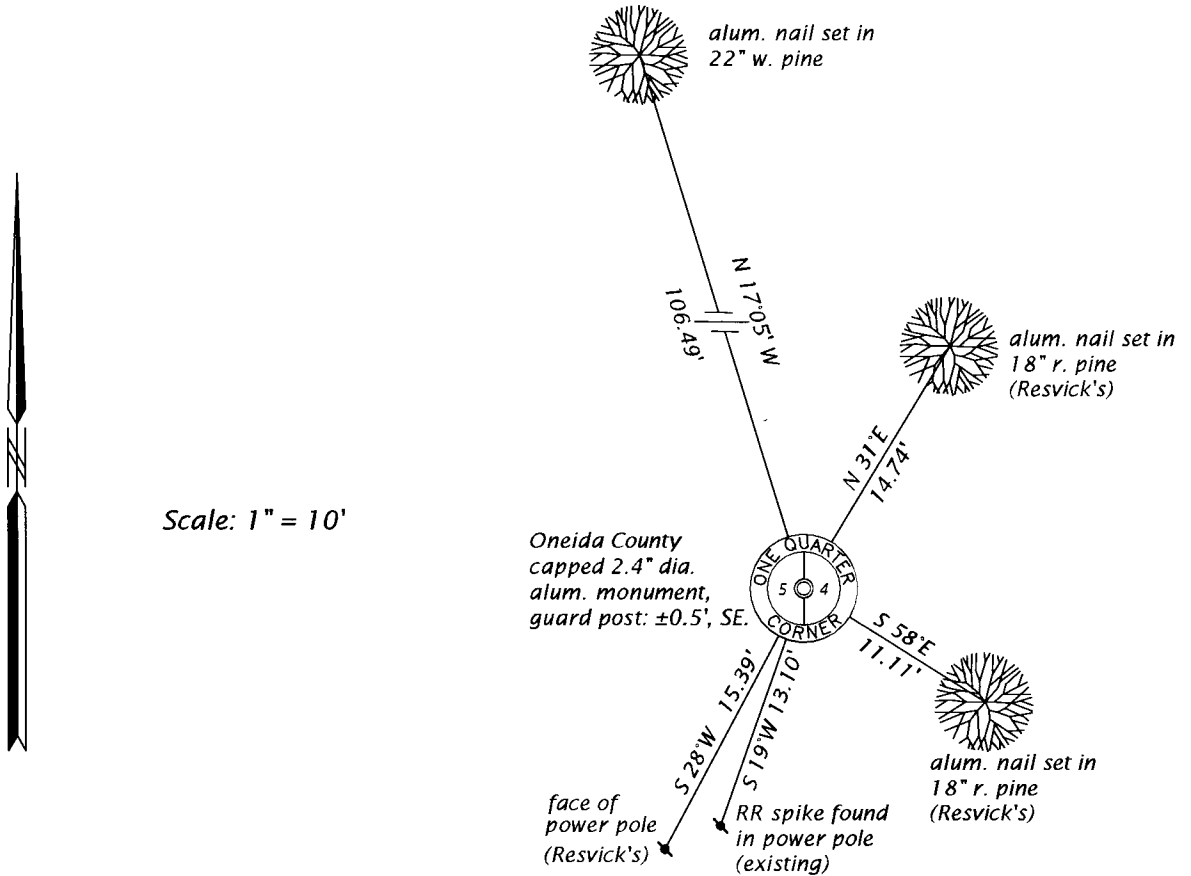
Original Surveyor:  
Date of Survey: Commenced  
Completed  
Original B.T.'S

(f)(g)(h) DESCRIPTION OF MONUMENT FOUND AT THIS CORNER AND IF IT WAS ACCEPTED, STATE ALL EVIDENCE (MATERIAL, TESTIMONIAL, OCCUPATIONAL, PLATS, RECORD, OTHER MONUMENTS) USED AS A BASIS FOR ESTABLISHING LOCATION. IF NOT ACCEPTED OR IF NOTHING WAS FOUND, STATE EVIDENCE USED AS BASIS FOR ESTABLISHING LOCATION. IF REESTABLISHED THROUGH LOST CORNER PROPORTIONATE METHODS, INDICATE ALL MONUMENTS, DISTANCES AND DIRECTIONS USED TO ESTABLISH. INDICATE TYPE OF MONUMENT AND SIGN POST FOUND OR SET.

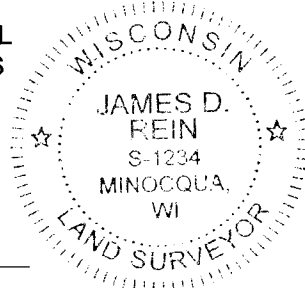
This is a perpetuation of a previous U.S.P.L.S. Monument Record by Jean F. Resvick, RLS, dated May 5, 1987, and filed in the office of the Oneida County Register of Deeds. A complete history of the corner can be found on the previous monument record. I accept the previous location as a true and faithful perpetuation or reestablishment of the original corner location and further perpetuate it as follows.

February 8, 2018, I, James D. Rein, P.L.S. No. S-1234, found and accepted the Oneida County capped aluminum monument set by Resvick in 1987. His northwesterly red pine is now gone - see below for updated witnesses.

(c)(d)(e) PLAN VIEW OF CORNER WITH TIES TO AT LEAST 4 WITNESS MONUMENTS. IF IN DISAGREEMENT WITH PREVIOUSLY ESTABLISHED CORNER, SHOW THE DISTANCE BETWEEN THE TWO CORNERS AND ALSO INDICATE THE TIES TO THE DISPUTED CORNER.



(i) I, JAMES D. REIN, PROFESSIONAL LAND SURVEYOR NO. S-1234 HEREBY CERTIFY THAT THE CORNER LOCATION ON THIS RECORD WAS DETERMINED BY ME OR UNDER MY DIRECTION AND CONTROL AND THAT THIS U.S. PUBLIC LAND SURVEY MONUMENT RECORD IS CORRECT AND COMPLETE TO THE BEST OF MY KNOWLEDGE AND BELIEF.



*[Handwritten Signature]*  
SIGNATURE

10-16-18  
DATE

INDEX NO. C-9  
3607052000