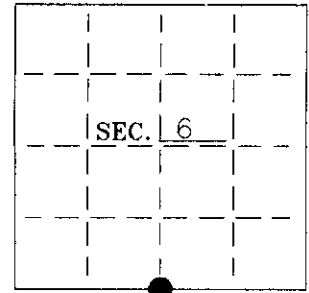


**U. S. PUBLIC LAND SURVEY MONUMENT RECORD**

Note: This form is intended and designed to fulfill all requirements of Wisconsin Administrative Code-Chapter A-E 7.08 U. S. Public Land Survey Monument Record (3)(a)(b)(c)(d)(e)(f)(g)(h)(i). An additional sheet may be added if necessary to conform with said requirements.

(a) CORNER LOCATION: State Plane Coordinates  
S 1/4 corner of Sec. 6 X \_\_\_\_\_  
 Township 36 North Y \_\_\_\_\_  
 Range 7 East Datum Base \_\_\_\_\_  
 Town Woodboro County of Oneida



(b) HISTORY OF ORIGINAL CORNER ESTABLISHMENT:  
 Original Surveyor: J.H. Jenkins  
 Date of Survey: Commenced November 1862  
 Completed November 1862

Original B.T.'S  
 Birch 7 S45°E, 24 lks  
 W. Pine 15 N69°E, 21 lks

(b)(f)(g)(h) Description of monument found at this corner and if it was accepted—state all evidence (material—testimonial—occupation—plats—records—other monuments) used as a basis for accepting. If not accepted or if nothing was found state evidence used as basis for establishing location. If reestablished through lost corner proportionate methods indicate all monuments—distances and directions used to establish. Indicate type of monument and sign post found or set.

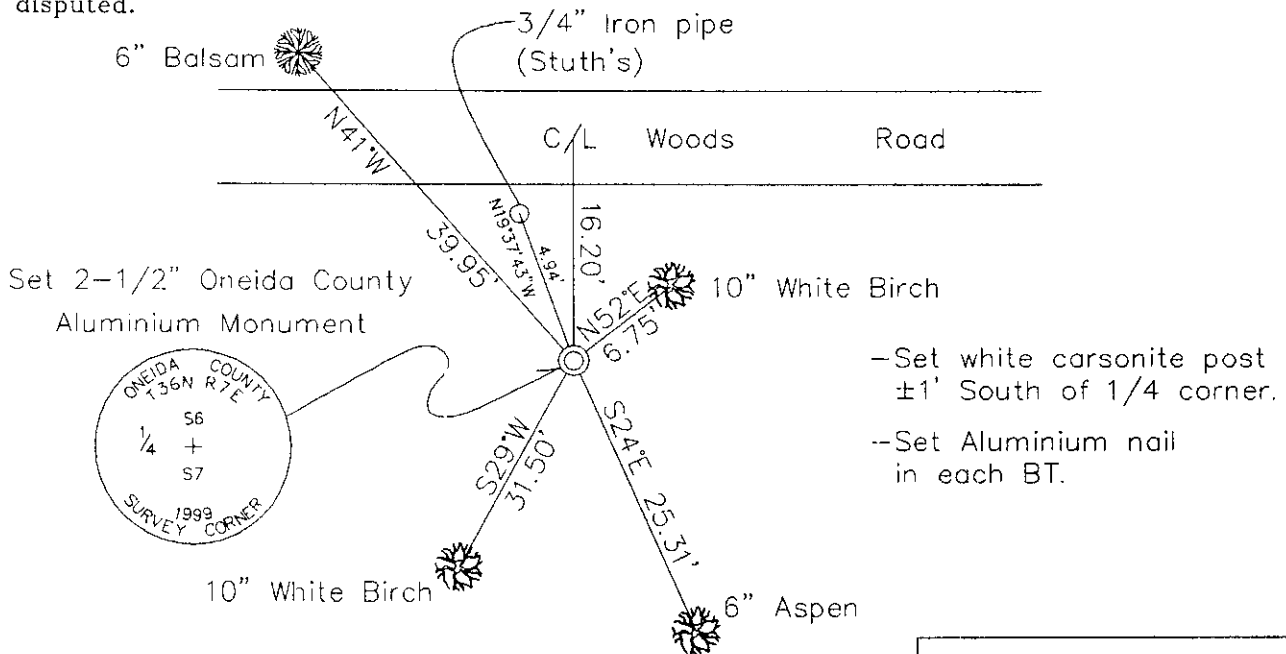
1862— J.H. Jenkins set 1/4 Section post.

1956— On a map dated 12-9-86 by W.H. Stuth(0-1), he shows an iron pipe set by single proportion, at the South 1/4 of Section 6. BT's: 6" W.B. S88°W, 29.0'; 4" W.B., S18°W, 36.0'.

1974-- Fisher, Inman, Foltz's field notes indicate they found a 1" iron pipe, up 22", with a post. They did not find any BT's.

1999— I found a 3/4" iron pipe, up ±3', with a wood post adjacent. I found no original evidence. In reportioning the south section line, I found Stuth's iron pipe to be erroneous. I set an Oneida County Aluminium Monument at the proportioned location and made 4 new BT's. See sketch below.

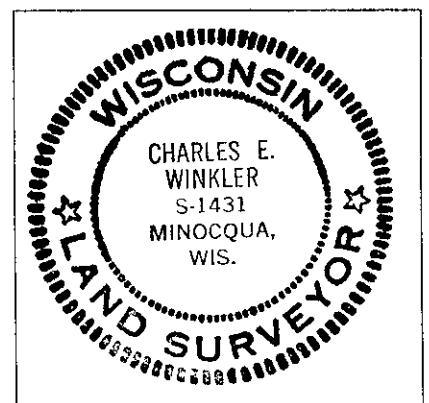
(c)(d)(e) Plan view of corner with ties to at least 4 witness monuments. If in disagreement with previously established corner—show the distances between the two corners and also indicate the ties to the disputed.



—Set white carsonite post ±1' South of 1/4 corner.  
 --Set Aluminium nail in each BT.

(i) I Charles E. Winkler S-1431 hereby certify that the corner location on this record was determined by me or under my direction and control and that this U.S. Public Land Survey Monument Record is correct and complete to the best of my knowledge and belief.

Charles E. Winkler 1/3/2001  
 Signature Foltz and Associates, Inc. Date



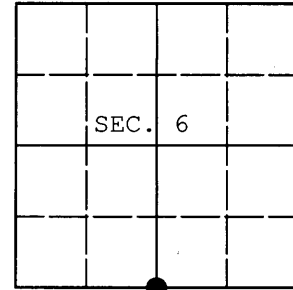
INDEX NO. E 3

360706 0020

**U.S. PUBLIC LAND SURVEY MONUMENT RECORD**

Note: This form is intended and designed to fulfill all requirements of Wisconsin Administrative Code, Chapter A-E 7.08 U.S. Public Land Survey Monument Record (3) (a) (b) (c) (d) (e) (f) (g) (h) (i). An additional sheet may be added if necessary to conform with said requirements.

(a) CORNER LOCATION: WISCORS (Oneida County)  
 1/4 Cor. of Secs. 6 & 7 N: 161,247.376 USft  
 Township 36 North E: 199,857.474 USft  
 Range 7 East of the 4th P.M. Datum: NAD 1983(2011)  
 Town of Woodboro County of Oneida



(b) HISTORY OF ORIGINAL CORNER ESTABLISHMENT

Original Surveyor: Joseph Jenkins Original Accessories:  
 Date of Survey: Commenced: Nov. 18, 1862 birch 7" S45°E, 24 lks.  
 Completed: Nov. 27, 1862 w. pine 15" N69°E, 21 lks.

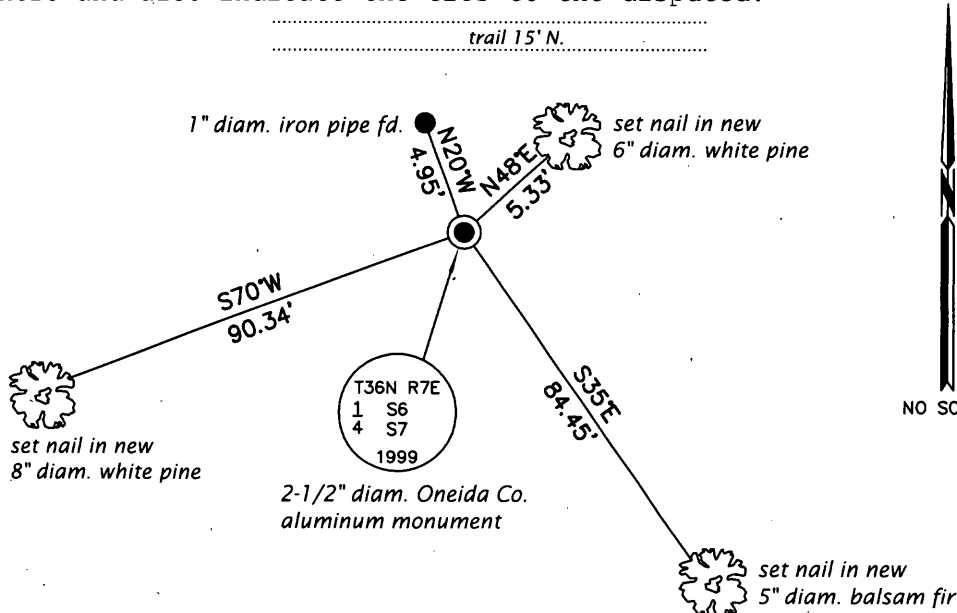
(b) (f) (g) (h) Description of monument found at this corner and if it was accepted, state all evidence (material; testimonial, occupational, plats, records, other monuments) used as a basis for accepting. If not accepted or if nothing was found, state evidence used as basis for establishing location. If re-established through lost corner proportionate methods, indicate all monuments, distances and directions used to establish. Indicate type of monument and sign post found or set.

NOTE: This is a perpetuation of a previous USPLS Monument Record by Charles E. Winkler, RLS dated January 3, 2001 and filed in the office of the Oneida County Register of Deeds. A complete history of the corner can be found on the previous monument record. I accept the previous location as a true and faithful perpetuation or reestablishment of the original corner location and further perpetuate it as follows.

October 16, 2013: I found and accepted Winkler's monument, a 2-1/2" diam. aluminum pipe with 3-1/4" diam. Oneida Co. aluminum cap projecting 6" above the ground surface. All of Winkler's trees are dead or completely gone. I established accessories as shown below and found a plastic sign post bearing South, 1 ft. dist.

The coordinates shown were derived from a direct RTN GPS observation referenced to the WISCORS network.

(c) (d) (e) Plan view of corner with ties to at least 4 witness monuments. If in disagreement with previously established corner, show the distances between the two corners and also indicate the ties to the disputed.



REGISTER OF DEEDS OFFICE  
 ONEIDA COUNTY  
 FILED

DEC 23 2013

AT \_\_\_\_\_ O'CLOCK \_\_\_\_\_ M  
 KYLE J. FRANSON  
 REGISTER OF DEEDS

(i) I, Jeffrey W. Austin, Registered Land Surveyor No. S-1885, hereby certify that the corner location on this record was determined by me or under my direction and control and that this U.S. Public Land Survey Monument Record is correct and complete to the best of my knowledge and belief.

Signature

Date

DEC 9, 2013

3607060020 (INDEX NO. E-3)