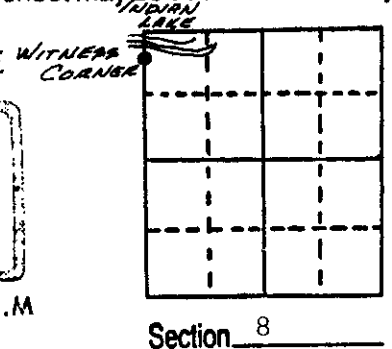
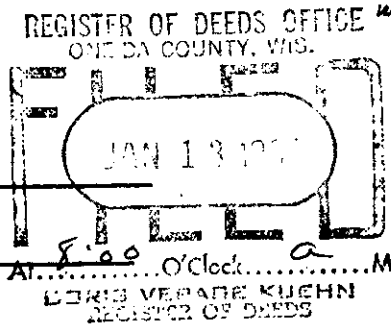


U.S. PUBLIC LAND SURVEY MONUMENT RECORD

Note: This form is intended and designed to fulfill all requirements of Wisconsin Administrative Code, Chapter A-E 5.02, U.S. Public Land Survey Monument Record (3) (a) (b) (c) (d) (e) (f) (g) (h) (i). An additional sheet may be added if necessary to conform with said requirements.

(a) Corner location: Township 36 North
 Range 7 East West
 Town/City/Village Woodboro
 County Oneida



(b) (f) (g) (h) Description of monument found at this corner and if it was accepted, state all evidence (material, testimonial, occupational, plats, records, other monuments) used as a basis for accepting. If not accepted or if nothing was found, state evidence used as basis for establishing location. If reestablished through lost corner proportionate methods, indicate all monuments, distances and directions used to establish.

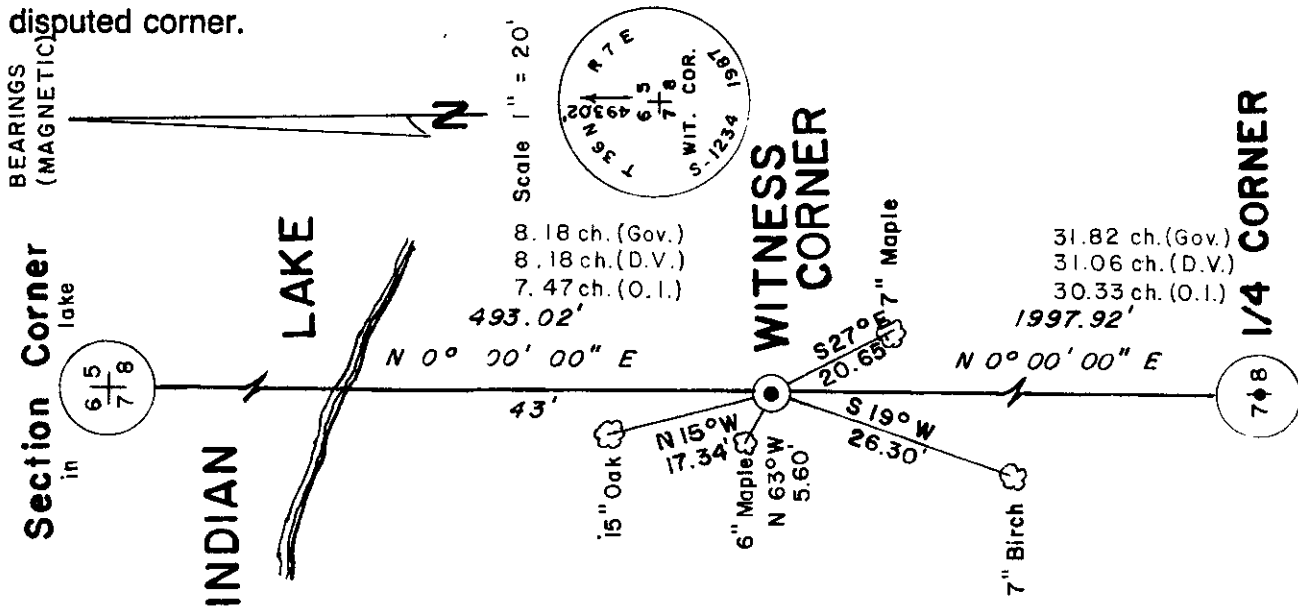
1862 Joseph Jenkins, Deputy Surveyor - Original survey North 71.82 chains intersect small lake set witness post for corner sections 5, 6, 7, and 8. No bearing trees. 80 chains Section Corner in lake.

December 6, 1906 - D. H. Vaughan, Oneida County Surveyor - Set witness corner post 70.10 chains North of section corner by intersection of original line with lake, set section corner in lake on ice by proportional prolonging line north 8.18' chains. Witness Corner Bearing trees: W. Pine (stump) 10", S71°W, 81 links; Aspen 3" S27°, 112 links.

1956 - Owen Illinois Survey - Found corner not identified on map 68.13 feet north of section corner. Prolong 7.47 chains to section corner in lake.

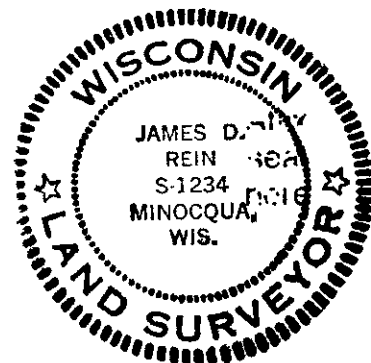
July 1987 - James Rein - Found 1 1/4" dia. iron pipe monumenting witness corner. Re-established corner in lake at Owen Illinois distance north of witness corner. This position is harmonious with existing monumentation and occupation along section line to the east. Replaced iron pipe with a capped 2" dia. flanged bottom aluminum monument marked as shown in plan. Set plastic post adjacent to corner monument. Made new bearing trees as shown in plan view. Distance measurements made to aluminum nails set in center of root crown on side of tree facing corner.

(c) (d) (e) Plan view of corner with ties to at least 4 witness monuments. If in disagreement with previously established corner, show the distances between the two corners and also indicate the ties to the disputed corner.



(i) I, James D. Rein, Registered Land Surveyor No. S-1234
 (type or print name) certify that the corner location on this record was determined by me or under my direction and control and that this U.S. Public Land Survey Monument Record is correct and complete to the best of my knowledge and belief.

James D. Rein August 20th, 1987
 Signature Date



Index No. E-F-5

3607073500