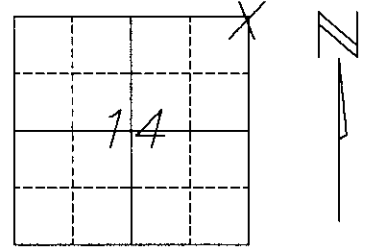


U.S. PUBLIC LAND SURVEY MONUMENT RECORD

NOTE: This form is intended and designed to fulfill all requirements of Wisconsin Administrative Code, Chapter A-E 7.08 U.S. Public Land Survey Monument Record (3) (a)(b)(c)(d)(e)(f)(g)(h)(i). An additional sheet may be added if necessary to conform with said requirements.

(a) Corner location: Township 36 North
 Range 7 East/West
 Town/City/Village WOODBORO
 County ONEIDA

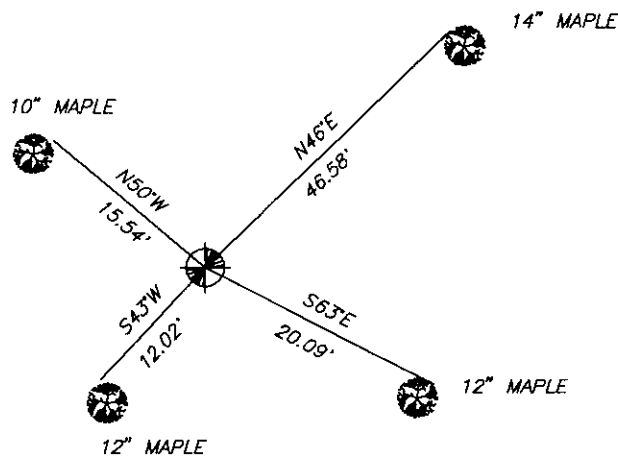


Section 14

(b)(f)(g)(h) Description of monument found at this corner and if it was accepted, state all evidence (material, testimonial, occupational, plats, records, other monuments) used as a basis for accepting. If not accepted or if nothing was found, state evidence used as basis for establishing location. If reestablished through lost corner proportionate methods, indicate all monuments, distances and directions used to establish. Indicate type of monument found or set and sign post.

ORIGINAL CORNER WAS SET IN NOVEMBER OF 1862 BY JOSEPH H. JENKINS. ORIGINAL BEARING TREES WERE AS FOLLOWS, 7" PINE-N18°W-27 LINKS, 7" PINE-N75°E-49 LINKS, 8" ASPEN-S17°W-6 LINKS, 7" BIRCH-S60°E-36 LINKS. ORIGINAL CORNER WAS FOUND IN SEPTEMBER OF 1890 BY B.F. DORR, NO MENTION OF ACCESSORIES WAS MADE. ORIGINAL CORNER WAS IDENTIFIED BY MAINE IN JULY OF 1937, FOUND ORIGINAL BT STUMPS. REMARKED NEW BT 18" Y. PINE-N18°W-27 LINKS, NO OTHER BT SET. MAINE RESET OFFICIAL CORNER. I FOUND NO OTHER RECORD OF THIS CORNER. A ONEIDA COUNTY MONUMENT WAS FOUND AT THIS CORNER. I ACCEPTED THIS MONUMENT AND MADE TIES TO CORNER.

(c)(d)(e) Plan view of corner with ties to at least 4 witness monuments. If in disagreement with previously established corner, show the distances between the two corners and also indicate the ties to the disputed corner.



REGISTER OF DEEDS OFFICE.
 ONEIDA COUNTY, WIS
FILED
OCT 28 1993
 At 8:00 O'clock a M
THOMAS H. LEIGHTON
 REGISTER OF DEEDS



(i), DEVON VANDEN HEUVEL
 (type or print name) certify that the corner location of this record was determined by me or under my direction and control and that this U.S. Public Land Survey Monument Record is correct and complete to the best of my knowledge and belief.

Devon Vanden Heuvel 9-20-93
 Signature Date

Stamp

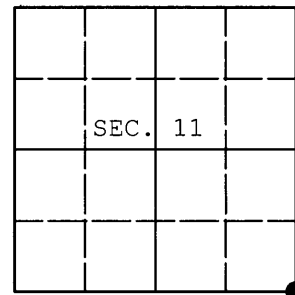
Index No. J-21

3607110000

U. S. PUBLIC LAND SURVEY MONUMENT RECORD

Note: This form is intended and designed to fulfill all requirements of Wisconsin Administrative Code, Chapter A-E 7.08 U.S. Public Land Survey Monument Record (3) (a) (b) (c) (d) (e) (f) (g) (h) (i). An additional sheet may be added if necessary to conform with said requirements.

(a) CORNER LOCATION: WISCORS (Oneida County)
Cor. of Secs. 11, 12, 13 & 14 N: 156,282.060 USft
Township 36 North E: 223,771.531 USft
Range 7 East of the 4th P.M. Datum: NAD 1983(2011)
Town of Woodboro County of Oneida



(b) HISTORY OF ORIGINAL CORNER ESTABLISHMENT

Original Surveyor: Original Accessories:
Date of Survey:

(b)(f)(g)(h) Description of monument found at this corner and if it was accepted, state all evidence (material, testimonial, occupational, plats, records, other monuments) used as a basis for accepting. If not accepted or if nothing was found, state evidence used as basis for establishing location. If re-established through lost corner proportionate methods, indicate all monuments, distances and directions used to establish. Indicate type of monument and sign post found or set.

NOTE: This is a perpetuation of a previous USPLS Monument Record by Devon Vanden Heuvel, RLS dated September 20, 1993 and filed in the office of the Oneida County Register of Deeds. A complete history of the corner can be found on the previous monument record. I accept the previous location as a true and faithful perpetuation or reestablishment of the original corner location and further perpetuate it as follows.

November 13, 2013: I found and accepted Vanden Heuvel's monument, a 2-1/2" diam. iron pipe with 2-1/2" diam. brass cap projecting 33" above the ground surface. Vanden Heuvel's accessories were found in substantial agreement with his previous record and were not remeasured as the sole purpose of this work is to report the coordinates of the corner point.

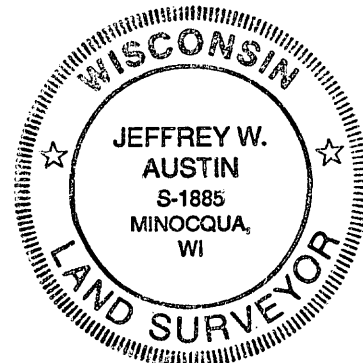
The coordinates shown were derived from a direct RTN GPS observation referenced to the WISCORS network.

(c)(d)(e) Plan view of corner with ties to at least 4 witness monuments. If in disagreement with previously established corner, show the distances between the two corners and also indicate the ties to the disputed.

REGISTER OF DEEDS OFFICE
ONEIDA COUNTY
FILED

DEC 23 2013

AT _____ O'CLOCK _____ M
KYLE J. FRANSON
REGISTER OF DEEDS



(i) I, Jeffrey W. Austin, Registered Land Surveyor No. S-1885, hereby certify that the corner location on this record was determined by me or under my direction and control and that this U.S. Public Land Survey Monument Record is correct and complete to the best of my knowledge and belief.

DEC. 9, 2013

Signature

Date

3607110000 (INDEX NO. J-21)