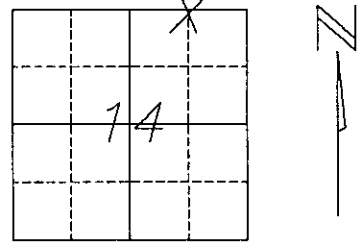


U.S. PUBLIC LAND SURVEY MONUMENT RECORD

NOTE: This form is intended and designed to fulfill all requirements of Wisconsin Administrative Code, Chapter A-E 7.08 U.S. Public Land Survey Monument Record (3) (a)(b)(c)(d)(e)(f)(g)(h)(i). An additional sheet may be added if necessary to conform with said requirements.

(a) Corner location: Township 36 North
 Range 7 East/West
 Town/City/Village WOODBORO
 County ONEIDA

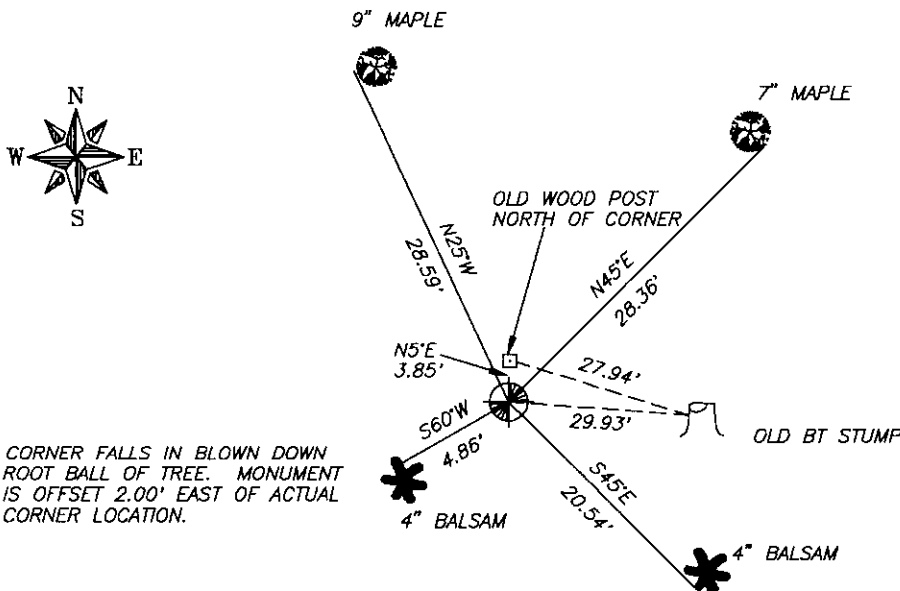


Section 14

(b)(f)(g)(h) Description of monument found at this corner and if it was accepted, state all evidence (material, testimonial, occupational, plats, records, other monuments) used as a basis for accepting. If not accepted or if nothing was found, state evidence used as basis for establishing location. If reestablished through lost corner proportionate methods, indicate all monuments, distances and directions used to establish. Indicate type of monument found or set and sign post.

AN OLD WOOD POST WAS FOUND WHICH WAS SET BY MAINE IN AUGUST OF 1937. I ALSO FOUND THE REMAINS OF A BT STUMP BY MAINE. I RESET THE CORNER EQUIDISTANT BETWEEN THE NORTHEAST AND THE NORTH ONE-QUARTER CORNER OF THE SECTION. I SET AN ONEIDA COUNTY MONUMENT AT THE CORNER LOCATION AND MADE NEW TIES TO THE CORNER.

(c)(d)(e) Plan view of corner with ties to at least 4 witness monuments. If in disagreement with previously established corner, show the distances between the two corners and also indicate the ties to the disputed corner.



REGISTER OF DEEDS OFFICE
 ONEIDA COUNTY, WIS
FILED
 OCT 28 1993
 At 800 O'Clock a M
 THOMAS H. LEIGHTON
 REGISTER OF DEEDS



Index No. J-20

(i), DEVON VANDEN HEUVEL

(type or print name) certify that the corner location of this record was determined by me or under my direction and control and that this U.S. Public Land Survey Monument Record is correct and complete to the best of my knowledge and belief.

Devon Vanden Heuvel 9-20-93
 Signature Date

Stamp

360710010